

golgin 97 (C-16): sc-74631

BACKGROUND

The GRIP family member, golgin 97, is a *trans*-Golgi network peripheral membrane protein with an extensive coiled-coil structure (67% α -helical content) and a C-terminal GRIP domain. Golgin 97 localizes exclusively on the cytoplasmic face of the Golgi and can form homodimers. Binding of golgin 97 to the Golgi membrane is mediated by the G protein family member, Arl1. Golgin 97 acts as an essential player to the cell in the form of a tethering molecule associating with tubulovesicular carriers during the trafficking from the *trans*-Golgi network to the recycling endosome and/or early endosome. During poxvirus infection, golgin 97 accumulates at the site of viral replication and is incorporated into virions. It associates with the insoluble fraction of the virus core protein, playing a significant role in virus replication and maturation of the virus membrane and core protein. Golgin 97 takes on a rod-like shape and, although it seemingly lacks a transmembrane domain, it protrudes from the surface of the virion envelope.

CHROMOSOMAL LOCATION

Genetic locus: GOLGA1 (human) mapping to 9q33.3; Golga1 (mouse) mapping to 2 B.

SOURCE

golgin 97 (C-16) is an affinity purified goat polyclonal antibody raised against a peptide mapping at the C-terminus of golgin 97 of human origin.

PRODUCT

Each vial contains 200 μ g IgG in 1.0 ml of PBS with < 0.1% sodium azide and 0.1% gelatin.

Blocking peptide available for competition studies, sc-74631 P, (100 μ g peptide in 0.5 ml PBS containing < 0.1% sodium azide and 0.2% BSA).

RESEARCH USE

For research use only, not for use in diagnostic procedures.

APPLICATIONS

golgin 97 (C-16) is recommended for detection of golgin 97 of mouse, rat and human origin by Western Blotting (starting dilution 1:200, dilution range 1:100-1:1000), immunoprecipitation [1-2 μ g per 100-500 μ g of total protein (1 ml of cell lysate)], immunofluorescence (starting dilution 1:50, dilution range 1:50-1:500) and solid phase ELISA (starting dilution 1:30, dilution range 1:30-1:3000).

golgin 97 (C-16) is also recommended for detection of golgin 97 in additional species, including equine, canine, bovine and porcine.

Suitable for use as control antibody for golgin 97 siRNA (h): sc-75162, golgin 97 siRNA (m): sc-75163, golgin 97 shRNA Plasmid (h): sc-75162-SH, golgin 97 shRNA Plasmid (m): sc-75163-SH, golgin 97 shRNA (h) Lentiviral Particles: sc-75162-V and golgin 97 shRNA (m) Lentiviral Particles: sc-75163-V.

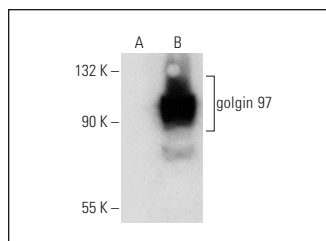
Molecular Weight of golgin 97: 97 kDa.

Positive Controls: SW480 cell lysate: sc-2219 or golgin 97 (h): 293T Lysate: sc-175383.

RECOMMENDED SECONDARY REAGENTS

To ensure optimal results, the following support (secondary) reagents are recommended: 1) Western Blotting: use donkey anti-goat IgG-HRP: sc-2020 (dilution range: 1:2000-1:100,000) or Cruz Marker™ compatible donkey anti-goat IgG-HRP: sc-2033 (dilution range: 1:2000-1:5000), Cruz Marker™ Molecular Weight Standards: sc-2035, TBS Blotto A Blocking Reagent: sc-2333 and Western Blotting Luminol Reagent: sc-2048. 2) Immunoprecipitation: use Protein A/G PLUS-Agarose: sc-2003 (0.5 ml agarose/2.0 ml). 3) Immunofluorescence: use donkey anti-goat IgG-FITC: sc-2024 (dilution range: 1:100-1:400) or donkey anti-goat IgG-TR: sc-2783 (dilution range: 1:100-1:400) with UltraCruz™ Mounting Medium: sc-24941.

DATA



golgin 97 (C-16): sc-74631. Western blot analysis of golgin 97 expression in non-transfected: sc-117752 (A) and human golgin 97 transfected: sc-175383 (B) 293T whole cell lysates.

STORAGE

Store at 4° C, ****DO NOT FREEZE****. Stable for one year from the date of shipment. Non-hazardous. No MSDS required.

PROTOCOLS

See our web site at www.scbt.com or our catalog for detailed protocols and support products.

MONOS
Satisfaction
Guaranteed

Try **golgin 97 (CDFX): sc-59820**, our highly recommended monoclonal alternative to golgin 97 (C-16).