

LGI2 (I-15): sc-74724

BACKGROUND

The leucine-rich (LRR) repeat is a 20-30 amino acid motif that forms a hydrophobic α/β horseshoe fold, allowing it to accommodate several leucine residues within a tightly packed core. All LRR repeats contain a variable segment and a highly conserved segment, the latter of which accounts for 11 or 12 residues of the entire LRR motif. LGI2 (leucine-rich repeat LGI family, member 2), also known as KIAA1916 or LGIL2, is a 545 amino acid secreted protein that contains 4 LRR repeats and 7 EAR repeats. Expressed in heart, brain and placenta, LGI2 shares high sequence similarity with other LGI family members and is thought to play a role in the pathogenesis of epileptic disorders.

REFERENCES

1. Kobe, B. and Deisenhofer, J. 1994. The leucine-rich repeat: a versatile binding motif. *Trends Biochem. Sci.* 19: 415-421.
2. Kobe, B. and Kajava, A.V. 2001. The leucine-rich repeat as a protein recognition motif. *Curr. Opin. Struct. Biol.* 11: 725-732.
3. Gu, W., Wevers, A., Schröder, H., Grzeschik, K.H., Derst, C., Brodtkorb, E., de Vos, R. and Steinlein, O.K. 2002. The LGI1 gene involved in lateral temporal lobe epilepsy belongs to a new subfamily of leucine-rich repeat proteins. *FEBS Lett.* 519: 71-76.
4. Scheel, H., Tomiuk, S. and Hofmann, K. 2002. A common protein interaction domain links two recently identified epilepsy genes. *Hum. Mol. Genet.* 11: 1757-1762.
5. Staub, E., Perez-Tur, J., Siebert, R., Nobile, C., Moschonas, N.K., Deloukas, P. and Hinzmann, B. 2002. The novel EPTP repeat defines a superfamily of proteins implicated in epileptic disorders. *Trends Biochem. Sci.* 27: 441-444.
6. Senechal, K.R., Thaller, C. and Noebels, J.L. 2005. ADPEAF mutations reduce levels of secreted LGI1, a putative tumor suppressor protein linked to epilepsy. *Hum. Mol. Genet.* 14: 1613-1620.
7. Gu, W., Gibert, Y., Wirth, T., Elischer, A., Bloch, W., Meyer, A., Steinlein, O.K. and Begemann, G. 2005. Using gene-history and expression analyses to assess the involvement of LGI genes in human disorders. *Mol. Biol. Evol.* 22: 2209-2216.
8. Online Mendelian Inheritance in Man, OMIM™. 2008. Johns Hopkins University, Baltimore, MD. MIM Number: 608301. World Wide Web URL: <http://www.ncbi.nlm.nih.gov/omim/>

CHROMOSOMAL LOCATION

Genetic locus: LGI2 (human) mapping to 4p15.2; Lgi2 (mouse) mapping to 5 C1.

SOURCE

LGI2 (I-15) is an affinity purified goat polyclonal antibody raised against a peptide mapping within an internal region of LGI2 of human origin.

STORAGE

Store at 4° C, ****DO NOT FREEZE****. Stable for one year from the date of shipment. Non-hazardous. No MSDS required.

PRODUCT

Each vial contains 200 μ g IgG in 1.0 ml of PBS with < 0.1% sodium azide and 0.1% gelatin.

Blocking peptide available for competition studies, sc-74724 P, (100 μ g peptide in 0.5 ml PBS containing < 0.1% sodium azide and 0.2% BSA).

APPLICATIONS

LGI2 (I-15) is recommended for detection of LGI2 of mouse, rat and human origin by Western Blotting (starting dilution 1:200, dilution range 1:100-1:1000), immunoprecipitation [1-2 μ g per 100-500 μ g of total protein (1 ml of cell lysate)], immunofluorescence (starting dilution 1:50, dilution range 1:50-1:500) and solid phase ELISA (starting dilution 1:30, dilution range 1:30-1:3000).

LGI2 (I-15) is also recommended for detection of LGI2 in additional species, including equine, canine, bovine, porcine and avian.

Suitable for use as control antibody for LGI2 siRNA (h): sc-75418, LGI2 siRNA (m): sc-75419, LGI2 shRNA Plasmid (h): sc-75418-SH, LGI2 shRNA Plasmid (m): sc-75419-SH, LGI2 shRNA (h) Lentiviral Particles: sc-75418-V and LGI2 shRNA (m) Lentiviral Particles: sc-75419-V.

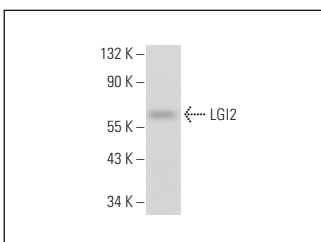
Molecular Weight of LGI2: 62 kDa.

Positive Controls: mouse placenta extract: sc-364247.

RECOMMENDED SECONDARY REAGENTS

To ensure optimal results, the following support (secondary) reagents are recommended: 1) Western Blotting: use donkey anti-goat IgG-HRP: sc-2020 (dilution range: 1:2000-1:100,000) or Cruz Marker™ compatible donkey anti-goat IgG-HRP: sc-2033 (dilution range: 1:2000-1:5000), Cruz Marker™ Molecular Weight Standards: sc-2035, TBS Blotto A Blocking Reagent: sc-2333 and Western Blotting Luminol Reagent: sc-2048. 2) Immunoprecipitation: use Protein A/G PLUS-Agarose: sc-2003 (0.5 ml agarose/2.0 ml). 3) Immunofluorescence: use donkey anti-goat IgG-FITC: sc-2024 (dilution range: 1:100-1:400) or donkey anti-goat IgG-TR: sc-2783 (dilution range: 1:100-1:400) with UltraCruz™ Mounting Medium: sc-24941.

DATA



LGI2 (I-15): sc-74724. Western blot analysis of LGI2 expression in mouse placenta tissue extract.

RESEARCH USE

For research use only, not for use in diagnostic procedures.