

# PLRP1 (I-16): sc-74849

## BACKGROUND

Pancreatic lipase plays a major role in dietary lipid degradation by hydrolyzing triglycerides into diglycerides and subsequently into monoglycerides and free fatty acids. Pancreatic lipase-related protein 1 (PLRP1), also known as PNLIPRP1, is a 467 amino acid protein belonging to the AB hydrolase superfamily and the lipase family. PLRP1 has a 68% amino acid identity with Pancreatic Lipase and 18-34% identity with Gastric Lipase, Hepatic Lipase and LPL. As a secretory protein, PLRP1 is expressed solely in the pancreas. Although PLRP1 is suggested to play a role in lipid degradation, it may have a different substrate and cofactor requirements than Pancreatic Lipase. Three isoforms of PLRP1 exist as a result of alternative splicing events.

## REFERENCES

1. Giller, T., et al. 1992. Two novel human Pancreatic Lipase related proteins, hPLRP1 and hPLRP2. Differences in colipase dependence and in lipase activity. *J. Biol. Chem.* 267: 16509-16516.
2. De Caro, J., et al. 1998. Pancreatic Lipase-related protein 1 (PLRP1) is present in the pancreatic juice of several species. *Biochim. Biophys. Acta* 1387: 331-341.
3. Online Mendelian Inheritance in Man, OMIM™. 2000. Johns Hopkins University, Baltimore, MD. MIM Number: 604422. World Wide Web URL: <http://www.ncbi.nlm.nih.gov/omim/>
4. Remington, S.G. and Nelson, J.D. 2002. mRNA encoding a new lipolytic enzyme expressed in rabbit lacrimal glands. *Invest. Ophthalmol. Vis. Sci.* 43: 3617-3624.
5. Reboul, E., et al 2006. Pancreatic Lipase and Pancreatic Lipase-related protein 2, but not Pancreatic Lipase-related protein 1, hydrolyze retinyl palmitate in physiological conditions. *Biochim. Biophys. Acta* 1761: 4-10.
6. Elinson, N., et al. 2006. Leptin directly regulates exocrine pancreas lipase and two related proteins in the rat. *Br. J. Nutr.* 96: 691-696.
7. Aloulou, A., et al. 2006. Constitutive expression of human Pancreatic Lipase-related protein 1 in *Pichia pastoris*. *Protein Expr. Purif.* 47: 415-421.
8. De Caro, J., et al. 2008. Occurrence of Pancreatic Lipase-related protein-2 in various species and its relationship with herbivore diet. *Comp. Biochem. Physiol. B, Biochem. Mol. Biol.* 150: 1-9.
9. Kim, K.S., et al. 2008. Pancreatic Lipase-related protein (PY-PLRP) highly expressed in the vitellogenic ovary of the scallop, *Patinopecten yessoensis*. *Comp. Biochem. Physiol. B, Biochem. Mol. Biol.* 151: 52-58.

## CHROMOSOMAL LOCATION

Genetic locus: Pnliprp1 (mouse) mapping to 19 D2.

## SOURCE

PLRP1 (I-16) is an affinity purified goat polyclonal antibody raised against a peptide mapping within an internal region of PLRP1 of mouse origin.

## RESEARCH USE

For research use only, not for use in diagnostic procedures.

## PRODUCT

Each vial contains 200 µg IgG in 1.0 ml of PBS with < 0.1% sodium azide and 0.1% gelatin.

Blocking peptide available for competition studies, sc-74849 P, (100 µg peptide in 0.5 ml PBS containing < 0.1% sodium azide and 0.2% BSA).

## APPLICATIONS

PLRP1 (I-16) is recommended for detection of PLRP1 of mouse and rat origin by Western Blotting (starting dilution 1:200, dilution range 1:100-1:1000), immunoprecipitation [1-2 µg per 100-500 µg of total protein (1 ml of cell lysate)], immunofluorescence (starting dilution 1:50, dilution range 1:50-1:500) and solid phase ELISA (starting dilution 1:30, dilution range 1:30-1:3000).

Suitable for use as control antibody for PLRP1 siRNA (m): sc-76173, PLRP1 shRNA Plasmid (m): sc-76173-SH and PLRP1 shRNA (m) Lentiviral Particles: sc-76173-V.

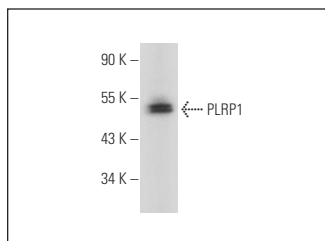
Molecular Weight of PLRP1: 52 kDa.

Positive Controls: mouse pancreas extract: sc-364244.

## RECOMMENDED SECONDARY REAGENTS

To ensure optimal results, the following support (secondary) reagents are recommended: 1) Western Blotting: use donkey anti-goat IgG-HRP: sc-2020 (dilution range: 1:2000-1:100,000) or Cruz Marker™ compatible donkey anti-goat IgG-HRP: sc-2033 (dilution range: 1:2000-1:5000), Cruz Marker™ Molecular Weight Standards: sc-2035, TBS Blotto A Blocking Reagent: sc-2333 and Western Blotting Luminol Reagent: sc-2048. 2) Immunoprecipitation: use Protein A/G PLUS-Agarose: sc-2003 (0.5 ml agarose/2.0 ml). 3) Immunofluorescence: use donkey anti-goat IgG-FITC: sc-2024 (dilution range: 1:100-1:400) or donkey anti-goat IgG-TR: sc-2783 (dilution range: 1:100-1:400) with UltraCruz™ Mounting Medium: sc-24941.

## DATA



PLRP1 (I-16): sc-74849. Western blot analysis of PLRP1 expression in mouse pancreas tissue extract.

## STORAGE

Store at 4° C, \*\*DO NOT FREEZE\*\*. Stable for one year from the date of shipment. Non-hazardous. No MSDS required.

## PROTOCOLS

See our web site at [www.scbt.com](http://www.scbt.com) or our catalog for detailed protocols and support products.