

PSMB6 (T-20): sc-74870

BACKGROUND

In eukaryotic cells, selective breakdown of cellular proteins is ensured by their ubiquitination and subsequent degradation by the 26S Proteasome. The 26S Proteasome is a protease complex that selectively breaks down proteins that have been modified by polyubiquitin chains. It is made up of two multisubunit complexes: the 20S Proteasome chamber, which serves as the proteolytic core of the complex, and two 19S regulatory particles which recognize and unfold ubiquitinated proteins. The 20S Proteasome chamber contains α subunits (which are structural) and β subunits (which are predominantly catalytic). The outer two rings in the proteasome consist of seven α subunits each, and the inner two rings each consist of seven β subunits. PSMB6 (prosome, macropain) subunit, β type, 6), also known as LMPY (PSY large multi-functional protease Y), macropain δ chain, proteasome δ chain or proteasome subunit Y, is a β subunit of the 20S Proteasome and, upon stimulation with IFN- γ , can be displaced by LMP2.

CHROMOSOMAL LOCATION

Genetic locus: PSMB6 (human) mapping to 17p13.2; Psmb6 (mouse) mapping to 11 B3.

SOURCE

PSMB6 (T-20) is an affinity purified goat polyclonal antibody raised against a peptide mapping within an internal region of PSMB6 of human origin.

PRODUCT

Each vial contains 200 μ g IgG in 1.0 ml of PBS with < 0.1% sodium azide and 0.1% gelatin.

Blocking peptide available for competition studies, sc-74870 P, (100 μ g peptide in 0.5 ml PBS containing < 0.1% sodium azide and 0.2% BSA)..

APPLICATIONS

PSMB6 (T-20) is recommended for detection of PSMB6 of mouse, rat and human origin by Western Blotting (starting dilution 1:200, dilution range 1:100-1:1000), immunoprecipitation [1-2 μ g per 100-500 μ g of total protein (1 ml of cell lysate)], immunofluorescence (starting dilution 1:50, dilution range 1:50-1:500), immunohistochemistry (including paraffin-embedded sections) (starting dilution 1:50, dilution range 1:50-1:500) and solid phase ELISA (starting dilution 1:30, dilution range 1:30-1:3000).

PSMB6 (T-20) is also recommended for detection of PSMB6 in additional species, including equine, canine, bovine and porcine.

Suitable for use as control antibody for PSMB6 siRNA (h): sc-76271, PSMB6 siRNA (m): sc-76272, PSMB6 shRNA Plasmid (h): sc-76271-SH, PSMB6 shRNA Plasmid (m): sc-76272-SH, PSMB6 shRNA (h) Lentiviral Particles: sc-76271-V and PSMB6 shRNA (m) Lentiviral Particles: sc-76272-V.

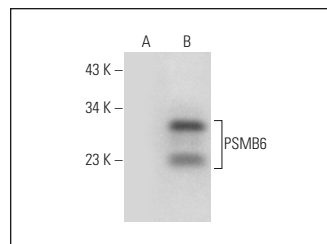
Molecular Weight of PSMB6: 25 kDa.

Positive Controls: A-431 whole cell lysate: sc-2201, HeLa whole cell lysate: sc-2200 or PSMB6 (h): 293T Lysate: sc-173799.

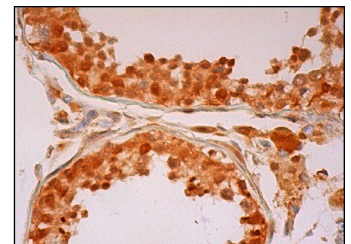
RECOMMENDED SECONDARY REAGENTS

To ensure optimal results, the following support (secondary) reagents are recommended: 1) Western Blotting: use donkey anti-goat IgG-HRP: sc-2020 (dilution range: 1:2000-1:100,000) or Cruz Marker™ compatible donkey anti-goat IgG-HRP: sc-2033 (dilution range: 1:2000-1:5000), Cruz Marker™ Molecular Weight Standards: sc-2035, TBS Blotto A Blocking Reagent: sc-2333 and Western Blotting Luminol Reagent: sc-2048. 2) Immunoprecipitation: use Protein A/G PLUS-Agarose: sc-2003 (0.5 ml agarose/2.0 ml). 3) Immunofluorescence: use donkey anti-goat IgG-FITC: sc-2024 (dilution range: 1:100-1:400) or donkey anti-goat IgG-TR: sc-2783 (dilution range: 1:100-1:400) with UltraCruz™ Mounting Medium: sc-24941. 4) Immunohistochemistry: use ImmunoCruz™: sc-2053 or ABC: sc-2023 goat IgG Staining Systems.

DATA



PSMB6 (T-20): sc-74870. Western blot analysis of PSMB6 expression in non-transfected: sc-117752 (A) and human PSMB6 transfected: sc-173799 (B) 293T whole cell lysates.



PSMB6 (T-20): sc-74870. Immunoperoxidase staining of formalin fixed, paraffin-embedded human testis tissue showing nuclear and cytoplasmic staining of cells in seminiferous ducts and Leydig cells.

STORAGE

Store at 4° C, ****DO NOT FREEZE****. Stable for one year from the date of shipment. Non-hazardous. No MSDS required

RESEARCH USE

For research use only, not for use in diagnostic procedures.

PROTOCOLS

See our web site at www.scbt.com or our catalog for detailed protocols and support products.

MONOS
Satisfaction
Guaranteed

Try **PSMB6 (JQ-3): sc-100455**, our highly recommended monoclonal alternative to PSMB6 (T-20).