

Talin (C-20): sc-7534

BACKGROUND

Focal adhesions were identified as areas within the plasma membrane of tissue culture cells that adhere tightly to the underlying substrate. *In vivo*, these regions are involved in the adhesion of cells to the extracellular matrix. Paxillin and vinculin are cytoskeletal, focal adhesion proteins that are components of a protein complex that links the actin network to the plasma membrane. Vinculin binding sites have been identified on other cytoskeletal proteins, including Talin-1 and α -actinin. In addition, vinculin, Talin-1, Talin-2 and α -actinin each contain actin binding sites. Expression of vinculin, Talin-1 and Talin-2 have been shown to be affected by the level of actin expression. α -actinin has been shown to link actin to integrins in the plasma membrane through interactions with the vinculin and Talin complex or by a direct interaction with integrin. Talin-2 is similar to Talin-1 but shows distinct patterns of expression and cannot compensate for the loss of Talin-1.

CHROMOSOMAL LOCATION

Genetic locus: TLN1 (human) mapping to 9p13.3, TLN2 (human) mapping to 15q22.2; Tln1 (mouse) mapping to 4 B1, Tln2 (mouse) mapping to 9 C.

SOURCE

Talin (C-20) is an affinity purified goat polyclonal antibody raised against a peptide mapping at the C-terminus of Talin-2 of human origin.

PRODUCT

Each vial contains 200 μ g IgG in 1.0 ml of PBS with < 0.1% sodium azide and 0.1% gelatin.

Blocking peptide available for competition studies, sc-7534 P, (100 μ g peptide in 0.5 ml PBS containing < 0.1% sodium azide and 0.2% BSA).

APPLICATIONS

Talin (C-20) is recommended for detection of Talin-1 and Talin-2 of mouse, rat and human origin by Western Blotting (starting dilution 1:200, dilution range 1:100-1:1000), immunoprecipitation [1-2 μ g per 100-500 μ g of total protein (1 ml of cell lysate)], immunofluorescence (starting dilution 1:50, dilution range 1:50-1:500) and solid phase ELISA (starting dilution 1:30, dilution range 1:30-1:3000).

Talin (C-20) is also recommended for detection of Talin-1 and Talin-2 in additional species, including equine, canine, bovine, porcine and avian.

Molecular Weight of Talin: 230 kDa.

Positive Controls: CCD-1064Sk cell lysate: sc-2263, Hs68 cell lysate: sc-2230 or NIH/3T3 whole cell lysate: sc-2210.

STORAGE

Store at 4° C, **DO NOT FREEZE**. Stable for one year from the date of shipment. Non-hazardous. No MSDS required.

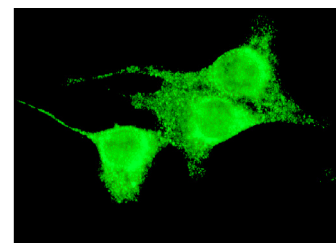
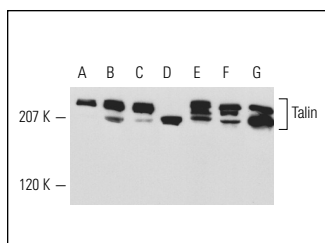
PROTOCOLS

See our web site at www.scbt.com or our catalog for detailed protocols and support products.

RESEARCH USE

For research use only, not for use in diagnostic procedures.

DATA



Talin (C-20): sc-7534. Western blot analysis of Talin expression in CCD-1064Sk (A), H1SM (B), Hs68 (C), Jurkat (D), L8 (E) and NIH/3T3 (F) whole cell lysates and mouse uterus (G) extract revealing cell-type differential expression of the full-length (225 kDa) and amino-terminally deleted (190 kDa) forms.

Talin (C-20): sc-7534. Immunofluorescence staining of methanol-fixed NIH/3T3 cells showing cytoskeletal localization.

SELECT PRODUCT CITATIONS

- Vyas, Y.M., et al. 2002. Cutting edge: differential segregation of the Src homology 2-containing protein tyrosine phosphatase-1 within the early NK cell immune synapse distinguishes noncytolytic from cytolytic interactions. *J. Immunol.* 168: 3150-3154.
- Luty, W., et al. 2007. Antiparallel segregation of notch components in the immunological synapse directs reciprocal signaling in allogeneic Th:DC conjugates. *J. Immunol.* 179: 819-829.
- Fujita, H., et al. 2007. Accelerated *de novo* sarcomere assembly by electric pulse stimulation in C2C12 myotubes. *Exp. Cell Res.* 313: 1853-1865.
- Tucker, K.L., et al. 2008. A dual role for integrin linked kinase in platelets: regulating integrin function and α -granule secretion. *Blood* 112: 4523-4531.
- Löer, B., et al. 2008. The NHL-domain protein Wech is crucial for the integrin-cytoskeleton link. *Nat. Cell Biol.* 10: 422-428.
- Mace, E.M., et al. 2010. Elucidation of the integrin LFA-1-mediated signaling pathway of actin polarization in natural killer cells. *Blood* 116: 1272-1279.
- Taherian, A., et al. 2011. Differences in integrin expression and signaling within human breast cancer cells. *BMC Cancer* 11: 293.
- Zhong, J., et al. 2011. The interactome of a PTB domain-containing adapter protein, Odin, revealed by SILAC. *J. Proteomics* 74: 294-303.
- Gordón-Alonso, M., et al. 2012. EWI-2 association with α -actinin regulates T cell immune synapses and HIV viral infection. *J. Immunology* 189: 689-700.



Try **Talin (C-9): sc-365875** or **Talin (TA205): sc-59940**, our highly recommended monoclonal alternatives to Talin (C-20). Also, for AC, HRP, FITC, PE, Alexa Fluor[®] 488 and Alexa Fluor[®] 647 conjugates, see **Talin (C-9): sc-365875**.