

CD36 (V-19): sc-7641

BACKGROUND

CD36 (collagen type I receptor, thrombospondin receptor, FAT, GP4, GP3B, GPIV, PASIV, SCARB3) is a membrane glycoprotein on platelets, monocytes and umbilical vein endothelial cells. CD36 binds to collagen, thrombospondin, anionic phospholipids and oxidized LDL. CD36 plays a key role in both phagocytosis and lipid recycling, for constant production of mature spermatozoa. Mutations in this gene cause platelet glycoprotein deficiency. Three alternatively spliced transcript variants encoding the same protein isoform have been found for this gene. Thrombospondins are widely distributed proteins that influence a variety of adhesive processes and CD36 may have important functions as a cell adhesion molecule.

CHROMOSOMAL LOCATION

Genetic locus: CD36 (human) mapping to 7q21.11; Cd36 (mouse) mapping to 5 A3.

SOURCE

CD36 (V-19) is an affinity purified goat polyclonal antibody raised against a peptide mapping near the N-terminus of CD36 of human origin.

PRODUCT

Each vial contains 200 µg IgG in 1.0 ml of PBS with < 0.1% sodium azide and 0.1% gelatin.

Blocking peptide available for competition studies, sc-7641 P, (100 µg peptide in 0.5 ml PBS containing < 0.1% sodium azide and 0.2% BSA).

APPLICATIONS

CD36 (V-19) is recommended for detection of CD36 of mouse, rat and human origin by Western Blotting (starting dilution 1:200, dilution range 1:100-1:1000), immunoprecipitation [1-2 µg per 100-500 µg of total protein (1 ml of cell lysate)], immunofluorescence (starting dilution 1:50, dilution range 1:50-1:500), immunohistochemistry (including paraffin-embedded sections) (starting dilution 1:50, dilution range 1:50-1:500) and solid phase ELISA (starting dilution 1:30, dilution range 1:30-1:3000).

CD36 (V-19) is also recommended for detection of CD36 in additional species, including equine, canine, bovine and porcine.

Suitable for use as control antibody for CD36 siRNA (h): sc-29995, CD36 siRNA (m): sc-37245, CD36 shRNA Plasmid (h): sc-29995-SH, CD36 shRNA Plasmid (m): sc-37245-SH, CD36 shRNA (h) Lentiviral Particles: sc-29995-V and CD36 shRNA (m) Lentiviral Particles: sc-37245-V.

Molecular Weight of CD36: 88 kDa.

Positive Controls: HUV-EC-C whole cell lysate: sc-364180, human platelet extract: sc-363773 or RAW 264.7 whole cell lysate: sc-2211.

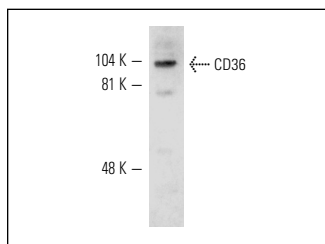
STORAGE

Store at 4° C, **DO NOT FREEZE**. Stable for one year from the date of shipment. Non-hazardous. No MSDS required.

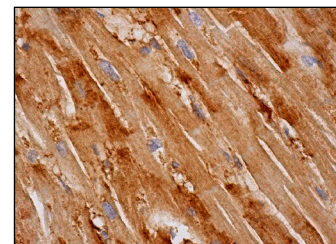
RECOMMENDED SECONDARY REAGENTS

To ensure optimal results, the following support (secondary) reagents are recommended: 1) Western Blotting: use donkey anti-goat IgG-HRP: sc-2020 (dilution range: 1:2000-1:100,000) or Cruz Marker™ compatible donkey anti-goat IgG-HRP: sc-2033 (dilution range: 1:2000-1:5000), Cruz Marker™ Molecular Weight Standards: sc-2035, TBS Blotto A Blocking Reagent: sc-2333 and Western Blotting Luminol Reagent: sc-2048. 2) Immunoprecipitation: use Protein A/G PLUS-Agarose: sc-2003 (0.5 ml agarose/2.0 ml). 3) Immunofluorescence: use donkey anti-goat IgG-FITC: sc-2024 (dilution range: 1:100-1:400) or donkey anti-goat IgG-TR: sc-2783 (dilution range: 1:100-1:400) with UltraCruz™ Mounting Medium: sc-24941. 4) Immunohistochemistry: use ImmunoCruz™: sc-2053 or ABC: sc-2023 goat IgG Staining Systems.

DATA



CD36 (V-19): sc-7641. Western blot analysis of CD36 expression in rat PBL whole cell lysate.



CD36 (V-19): sc-7641. Immunoperoxidase staining of formalin fixed, paraffin-embedded human heart muscle tissue showing cytoplasmic staining of myocytes

SELECT PRODUCT CITATIONS

- Zhao, H., et al. 2014. Coexpression of IQ-domain GTPase-activating protein 1 (IQGAP1) and Dishevelled (Dvl) is correlated with poor prognosis in non-small cell lung cancer. *PLoS ONE* 9: e113713.
- Kim, Y.M., et al. 2015. The anti-obesity effects of a tuna peptide on 3T3-L1 adipocytes are mediated by the inhibition of the expression of lipogenic and adipogenic genes and by the activation of the Wnt/β-catenin signaling pathway. *Int. J. Mol. Med.* 36: 327-334.

RESEARCH USE

For research use only, not for use in diagnostic procedures.

PROTOCOLS

See our web site at www.scbt.com or our catalog for detailed protocols and support products.



Try **CD36 (SMφ): sc-7309**, our highly recommended monoclonal alternative to CD36 (V-19). Also, for AC, HRP, FITC, PE, Alexa Fluor[®] 488 and Alexa Fluor[®] 647 conjugates, see **CD36 (SMφ): sc-7309**.