

Rb (M-153): sc-7905

BACKGROUND

Pediatric cancer retinoblastoma and the formation of other human tumors can be attributed to mutations in the retinoblastoma tumor suppressor gene. The retinoblastoma tumor suppressor gene product, known as Rb or pRb, regulates differentiation, apoptosis and cell cycle control by coordinating the cell cycle, at G₁/S, with transcriptional machinery that includes the heterodimeric E2F family. During G₁, cyclin D (D1, 2, 3)-dependent kinase-mediated phosphorylation of Rb at Ser 795 marks the conversion of Rb from a transcriptionally repressive, hypophosphorylated state to an inactive, phosphorylated state, which may be sustained through mitosis by differential phosphorylation of up to 16 putative serine or threonine residues, including Ser 249/Thr 252, Thr 373, Thr 356, Ser 780, Ser 807/Ser 811 and Thr 821/Thr 826. Hypophosphorylated Rb represses the transcription of genes controlling cell cycle through direct protein-protein interactions, by binding and inactivating the promoters of transcription factors, and through recruitment of histone deacetylase, which deacetylates promoter regions and enhances nucleosome formation, thereby masking transcription enhancing *cis* elements.

CHROMOSOMAL LOCATION

Genetic locus: RB1 (human) mapping to 13q14.2; Rb1 (mouse) mapping to 14 D3.

SOURCE

Rb (M-153) is a rabbit polyclonal antibody raised against amino acids 769-921 mapping at the C-terminus of Rb of mouse origin.

PRODUCT

Each vial contains 200 µg IgG in 1.0 ml of PBS with < 0.1% sodium azide and 0.1% gelatin.

APPLICATIONS

Rb (M-153) is recommended for detection of Rb of mouse, rat and human origin by Western Blotting (starting dilution 1:200, dilution range 1:100-1:1000), immunoprecipitation [1-2 µg per 100-500 µg of total protein (1 ml of cell lysate)], immunofluorescence (starting dilution 1:50, dilution range 1:50-1:500), immunohistochemistry (including paraffin-embedded sections) (starting dilution 1:50, dilution range 1:50-1:500) and solid phase ELISA (starting dilution 1:30, dilution range 1:30-1:3000).

Rb (M-153) is also recommended for detection of Rb in additional species, including equine, canine, bovine and porcine.

Suitable for use as control antibody for Rb siRNA (h): sc-29468, Rb siRNA (m): sc-29469, Rb shRNA Plasmid (h): sc-29468-SH, Rb shRNA Plasmid (m): sc-29469-SH, Rb shRNA (h) Lentiviral Particles: sc-29468-V and Rb shRNA (m) Lentiviral Particles: sc-29469-V.

Molecular Weight (predicted) of Rb: 106 kDa.

Molecular Weight (observed) of Rb: 107-140 kDa.

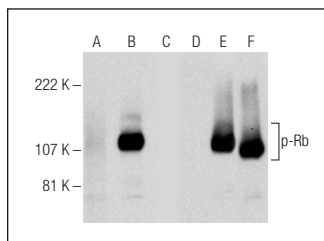
STORAGE

Store at 4° C, ****DO NOT FREEZE****. Stable for one year from the date of shipment. Non-hazardous. No MSDS required.

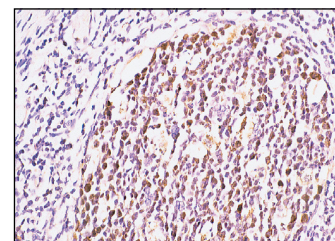
RESEARCH USE

For research use only, not for use in diagnostic procedures.

DATA



Western blot analysis of Rb phosphorylation in non-transfected: sc-117752 (A,D), untreated human Rb transfected: sc-114014 (B,E) and lambda protein phosphatase (sc-200312A) treated human Rb transfected: sc-114014 (C,F) 293T whole cell lysates. Antibodies tested include p-Rb (C-3): sc-377524 (A,B,C) and Rb (M-153): sc-7905 (D,E,F).



Rb (M-153): sc-7905. Immunoperoxidase staining of formalin-fixed, paraffin-embedded human tonsil tissue showing nuclear localization.

SELECT PRODUCT CITATIONS

- Meyer, C.A., et al. 2000. *Drosophila* Cdk4 is required for normal growth and is dispensable for cell cycle progression. *EMBO J.* 19: 4533-4542.
- Ganzenmueller, T., et al. 2008. The E7 protein of the cottontail rabbit papillomavirus immortalizes normal rabbit keratinocytes and reduces pRb levels, while E6 cooperates in immortalization but neither degrades p53 nor binds E6AP. *Virology* 372: 313-324.
- Li, X., et al. 2009. p27^{KIP1} regulates neurogenesis in the rostral migratory stream and olfactory bulb of the postnatal mouse. *J. Neurosci.* 29: 2902-2914.
- Kim, J.H., et al. 2009. Role of mammalian Ecdysoneless in cell cycle regulation. *J. Biol. Chem.* 284: 26402-26410.
- Sha, J., et al. 2010. E1A interacts with two opposing transcriptional pathways to induce quiescent cells into S phase. *J. Virol.* 84: 4050-4059.
- Mitra, S., et al. 2010. RBSP3 is frequently altered in premalignant cervical lesions: clinical and prognostic significance. *Genes Chromosomes Cancer* 49: 155-170.
- Kondegowda, N.G., et al. 2011. Effects of non-digestible carbohydrates on the growth of estrogen-dependent human breast cancer (MCF-7) tumors implanted in ovariectomized athymic mice. *Nutr. Cancer* 63: 55-64.
- Wang, X., et al. 2011. Unexpected reduction of skin tumorigenesis on expression of cyclin-dependent kinase 6 in mouse epidermis. *Am. J. Pathol.* 178: 345-354.

MONOS
Satisfaction
Guaranteed

Try **Rb (IF8): sc-102** or **Rb (C-2): sc-74562**, our highly recommended monoclonal alternatives to Rb (M-153). Also, for AC, HRP, FITC, PE, Alexa Fluor[®] 488 and Alexa Fluor[®] 647 conjugates, see **Rb (IF8): sc-102**.