

TIM-2 (P-20): sc-79135

BACKGROUND

CD4⁺ T helper lymphocytes can be divided into types 1 (Th1) and 2 (Th2) on the basis of their cytokine secretion patterns. Th1 cells and their associated cytokines are involved in cell-mediated immunity to intracellular pathogens and delayed-type hypersensitivity reactions. Th2 cells are involved in the control of extracellular helminthic infections and the promotion of atopic and allergic diseases. T cell Ig- and Mucin-domain-containing molecules (TIMs) are a family of molecules expressed on T cells. TIM-2 inhibits T cell activation *in vitro* and T cell-mediated disease *in vivo*. TIM-2 is expressed preferentially in differentiated Th2 cells, and is critical for the negative regulation of Th2 responses during autoimmune inflammation. Further understanding of the mechanisms by which TIM-2 regulates Th2-effector activity may provide insight into the therapeutic modulation of immune-mediated diseases.

REFERENCES

1. Kumanogoh, A., Marukawa, S., Suzuki, K., Takegahara, N., Watanabe, C., Ch'ng, E., Ishida, I., Fujimura, H., Sakoda, S., Yoshida, K. and Kikutani, H. 2002. Class IV semaphorin SEMA4A enhances T cell activation and interacts with TIM-2. *Nature* 419: 629-633.
2. Kumanogoh, A. and Kikutani, H. 2003. Immune semaphorins: a new area of semaphorin research. *J. Cell Sci.* 116: 3463-3470.
3. Chakravarti, S., Sabatos, C.A., Xiao, S., Illes, Z., Cha, E.K., Sobel, R.A., Zheng, X.X., Strom, T.B. and Kuchroo, V.K. 2005. TIM-2 regulates T helper type 2 responses and autoimmunity. *J. Exp. Med.* 202: 437-444.
4. Chen, T.T., Li, L., Chung, D.H., Allen, C.D., Torti, S.V., Torti, F.M., Cyster, J.G., Chen, C.Y., Brodsky, F.M., Niemi, E.C., Nakamura, M.C., Seaman, W.E. and Daws, M.R. 2005. TIM-2 is expressed on B cells and in liver and kidney and is a receptor for H-ferritin endocytosis. *J. Exp. Med.* 202: 955-965.
5. Mariat, C., Sánchez-Fueyo, A., Alexopoulos, S.P., Kenny, J., Strom, T.B. and Zheng, X.X. 2005. Regulation of T cell dependent immune responses by TIM family members. *Philos. Trans. R. Soc. Lond., B, Biol. Sci.* 360: 1681-1685.
6. Meyers, J.H., Sabatos, C.A., Chakravarti, S. and Kuchroo, V.K. 2005. The TIM gene family regulates autoimmune and allergic diseases. *Trends Mol. Med.* 11: 362-369.

CHROMOSOMAL LOCATION

Genetic locus: *Timd2* (mouse) mapping to 11 B1.1.

SOURCE

TIM-2 (P-20) is an affinity purified goat polyclonal antibody raised against a peptide mapping within an extracellular domain of TIM-2 of mouse origin.

PRODUCT

Each vial contains 200 µg IgG in 1.0 ml of PBS with < 0.1% sodium azide and 0.1% gelatin.

Blocking peptide available for competition studies, sc-79135 P, (100 µg peptide in 0.5 ml PBS containing < 0.1% sodium azide and 0.2% BSA).

APPLICATIONS

TIM-2 (P-20) is recommended for detection of TIM-2 of mouse origin by Western Blotting (starting dilution 1:200, dilution range 1:100-1:1000), immunoprecipitation [1-2 µg per 100-500 µg of total protein (1 ml of cell lysate)], immunofluorescence (starting dilution 1:50, dilution range 1:50-1:500) and solid phase ELISA (starting dilution 1:30, dilution range 1:30-1:3000).

Suitable for use as control antibody for TIM-2 siRNA (m): sc-72003, TIM-2 shRNA Plasmid (m): sc-72003-SH and TIM-2 shRNA (m) Lentiviral Particles: sc-72003-V.

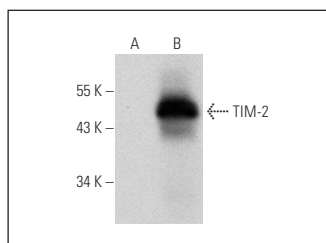
Molecular Weight of TIM-2: 34 kDa.

Positive Controls: TIM-2 (m): 293T Lysate: sc-126101.

RECOMMENDED SECONDARY REAGENTS

To ensure optimal results, the following support (secondary) reagents are recommended: 1) Western Blotting: use donkey anti-goat IgG-HRP: sc-2020 (dilution range: 1:2000-1:100,000) or Cruz Marker™ compatible donkey anti-goat IgG-HRP: sc-2033 (dilution range: 1:2000-1:5000), Cruz Marker™ Molecular Weight Standards: sc-2035, TBS Blotto A Blocking Reagent: sc-2333 and Western Blotting Luminol Reagent: sc-2048. 2) Immunoprecipitation: use Protein A/G PLUS-Agarose: sc-2003 (0.5 ml agarose/2.0 ml). 3) Immunofluorescence: use donkey anti-goat IgG-FITC: sc-2024 (dilution range: 1:100-1:400) or donkey anti-goat IgG-TR: sc-2783 (dilution range: 1:100-1:400) with UltraCruz™ Mounting Medium: sc-24941.

DATA



TIM-2 (P-20): sc-79135. Western blot analysis of TIM-2 expression in non-transfected: sc-117752 (A) and mouse TIM-2 transfected: sc-126101 (B) 293T whole cell lysates.

STORAGE

Store at 4° C, **DO NOT FREEZE**. Stable for one year from the date of shipment. Non-hazardous. No MSDS required.

RESEARCH USE

For research use only, not for use in diagnostic procedures.

PROTOCOLS

See our web site at www.scbt.com or our catalog for detailed protocols and support products.