

TIS11B (S-19): sc-79151

BACKGROUND

TIS11B (tetradecanoyl phorbol acetate-inducible sequence 11b), also known as ZFP36L1, BRF1 (butyrate response factor 1), ERF1 (EGF response factor 1), cMG1, Berg36 or RNF162B, is a member of the tristetraprolin family. Tristetraprolin (TTP), or TIS11, is a zinc-binding protein encoded by the immediate-early response gene, Zfp-36. TIS11B, a relative of TTP, localizes to the nucleus and may function as a transcription factor involved in regulating the growth factor response. It is an evolutionarily conserved protein containing two C3H1-type zinc fingers and a repeating Cys-His motif. TIS11B is an mRNA binding protein and is known to interact with the 3'-untranslated region of VEGF mRNA, thereby decreasing its stability. This suggests that TIS11B is a potential target in antiangiogenic therapy. In addition, TIS11B may also be an important regulator of myogenesis, as its expression is upregulated during murine myoblast differentiation.

REFERENCES

1. Taylor, G.A., et al. 1991. The human TTP protein: sequence, alignment with related proteins, and chromosomal localization of the mouse and human genes. *Nucleic Acids Res.* 19: 3454.
2. Kaneda, N., et al. 1992. Sequence of a rat TIS11 cDNA, an immediate early gene induced by growth factors and phorbol esters. *Gene* 118: 289-291.
3. Johnson, B.A., et al. 2000. Similar but distinct effects of the tristetraprolin/TIS11 immediate-early proteins on cell survival. *Oncogene* 19: 1657-1664.
4. Johnson, B.A., et al. 2002. Multiple tristetraprolin sequence domains required to induce apoptosis and modulate responses to TNF α through distinct pathways. *Oncogene* 21: 4237-4246.

CHROMOSOMAL LOCATION

Genetic locus: ZFP36L1 (human) mapping to 14q24.1; Zfp36l1 (mouse) mapping to 12 C3.

SOURCE

TIS11B (S-19) is an affinity purified goat polyclonal antibody raised against a peptide mapping within an internal region of TIS11B of human origin.

PRODUCT

Each vial contains 200 μ g IgG in 1.0 ml of PBS with < 0.1% sodium azide and 0.1% gelatin. Also available as TransCruz reagent for Gel Supershift and ChIP applications, sc-79151 X, 200 μ g/0.1 ml.

Blocking peptide available for competition studies, sc-79151 P, (100 μ g peptide in 0.5 ml PBS containing < 0.1% sodium azide and 0.2% BSA).

STORAGE

Store at 4 $^{\circ}$ C, ****DO NOT FREEZE****. Stable for one year from the date of shipment. Non-hazardous. No MSDS required.

PROTOCOLS

See our web site at www.scbt.com or our catalog for detailed protocols and support products.

APPLICATIONS

TIS11B (S-19) is recommended for detection of TIS11B of mouse, rat and human origin by Western Blotting (starting dilution 1:200, dilution range 1:100-1:1000), immunoprecipitation [1-2 μ g per 100-500 μ g of total protein (1 ml of cell lysate)], immunofluorescence (starting dilution 1:50, dilution range 1:50-1:500) and solid phase ELISA (starting dilution 1:30, dilution range 1:30-1:3000).

TIS11B (S-19) is also recommended for detection of TIS11B in additional species, including equine, canine, bovine and porcine.

Suitable for use as control antibody for TIS11B siRNA (h): sc-76672, TIS11B siRNA (m): sc-76673, TIS11B shRNA Plasmid (h): sc-76672-SH, TIS11B shRNA Plasmid (m): sc-76673-SH, TIS11B shRNA (h) Lentiviral Particles: sc-76672-V and TIS11B shRNA (m) Lentiviral Particles: sc-76673-V.

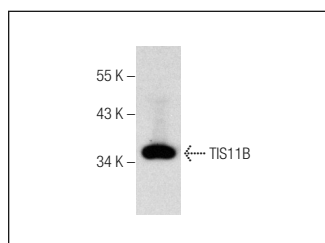
TIS11B (S-19) X TransCruz antibody is recommended for Gel Supershift and ChIP applications.

Molecular Weight (predicted) of TIS11B: 36 kDa.

Molecular Weight (observed) of TIS11B: 32/36 kDa.

Positive Controls: DU 145 cell lysate: sc-2268 or HeLa whole cell lysate: sc-2200.

DATA



TIS11B (S-19): sc-79151. Western blot analysis of TIS11B expression in DU 145 whole cell lysate.

RESEARCH USE

For research use only, not for use in diagnostic procedures.

MONOS
Satisfaction
Guaranteed

Try **TIS11B (1A3): sc-293267**, our highly recommended monoclonal alternative to TIS11B (S-19).