

TIS11D (P-16): sc-79154

BACKGROUND

TIS11D, also known as ZFP36LA (zinc finger protein 36, C3H type-like 2), BRF2 (butyrate response factor 2), ERF2 or RNF162C, is a 494 amino acid protein that localizes to the nucleus and contains two CSH1-type zinc fingers. Belonging to the TIS11 family of early response proteins, TIS11D is thought to function as a nuclear transcription factor that binds to 5'UUAUUUAUUU-3' core RNA sequences and may regulate growth factor-induced cellular responses. The gene encoding TIS11D maps to human chromosome 2, which houses over 1,400 genes and comprises nearly 8% of the human genome. Harlequin ichthyosis, a rare and morbid skin deformity, is associated with mutations in the ABCA12 gene, while the lipid metabolic disorder sitosterolemia is associated with defects in the ABCG5 and ABCG8 genes. Additionally, an extremely rare recessive genetic disorder, Alström syndrome, is caused by mutations in the ALMS1 gene, which maps to chromosome 2.

REFERENCES

1. Nie, X.F., Maclean, K.N., Kumar, V., McKay, I.A. and Bustin, S.A. 1995. ERF-2, the human homologue of the murine Tis11d early response gene. *Gene* 152: 285-286.
2. Ino, T., Yasui, H., Hirano, M. and Kurosawa, Y. 1995. Identification of a member of the TIS11 early response gene family at the insertion point of a DNA fragment containing a gene for the T cell receptor beta chain in an acute T-cell leukemia. *Oncogene* 11: 2705-2710.
3. Blackshear, P.J., Phillips, R.S., Vazquez-Matias, J. and Mohrenweiser, H. 2003. Polymorphisms in the genes encoding members of the tristetraprolin family of human tandem CCCH zinc finger proteins. *Prog. Nucleic Acid Res. Mol. Biol.* 75: 43-68.
4. Hudson, B.P., Martinez-Yamout, M.A., Dyson, H.J. and Wright, P.E. 2004. Recognition of the mRNA AU-rich element by the zinc finger domain of TIS11d. *Nat. Struct. Mol. Biol.* 11: 257-264.
5. Jackson, R.S., Cho, Y.J. and Liang, P. 2006. TIS11D is a candidate proapoptotic p53 target gene. *Cell Cycle*. 5: 2889-2893.

CHROMOSOMAL LOCATION

Genetic locus: ZFP36L2 (human) mapping to 2p21; Zfp36l2 (mouse) mapping to 17 E4.

SOURCE

TIS11D (P-16) is an affinity purified goat polyclonal antibody raised against a peptide mapping within an internal region of TIS11D of human origin.

PRODUCT

Each vial contains 200 µg IgG in 1.0 ml of PBS with < 0.1% sodium azide and 0.1% gelatin.

Blocking peptide available for competition studies, sc-79154 P, (100 µg peptide in 0.5 ml PBS containing < 0.1% sodium azide and 0.2% BSA).

Available as TransCruz reagent for Gel Supershift and ChIP applications, sc-79154 X, 200 µg/0.1 ml.

APPLICATIONS

TIS11D (P-16) is recommended for detection of TIS11D of mouse, rat and human origin by Western Blotting (starting dilution 1:200, dilution range 1:100-1:1000), immunoprecipitation [1-2 µg per 100-500 µg of total protein (1 ml of cell lysate)], immunofluorescence (starting dilution 1:50, dilution range 1:50-1:500) and solid phase ELISA (starting dilution 1:30, dilution range 1:30-1:3000).

TIS11D (P-16) is also recommended for detection of TIS11D in additional species, including canine, bovine and porcine.

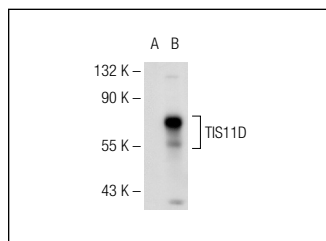
Suitable for use as control antibody for TIS11D siRNA (h): sc-76674, TIS11D siRNA (m): sc-76675, TIS11D shRNA Plasmid (h): sc-76674-SH, TIS11D shRNA Plasmid (m): sc-76675-SH, TIS11D shRNA (h) Lentiviral Particles: sc-76674-V and TIS11D shRNA (m) Lentiviral Particles: sc-76675-V.

TIS11D (P-16) X TransCruz antibody is recommended for Gel Supershift and ChIP applications.

Molecular Weight of TIS11D: 51 kDa.

Positive Controls: TIS11D (h2): 293T Lysate: sc-174242 or Hep G2 cell lysate: sc-2227.

DATA



TIS11D (P-16): sc-79154. Western blot analysis of TIS11D expression in non-transfected: sc-117752 (A) and human TIS11D transfected: sc-174242 (B) 293T whole cell lysates.

STORAGE

Store at 4° C, **DO NOT FREEZE**. Stable for one year from the date of shipment. Non-hazardous. No MSDS required.

RESEARCH USE

For research use only, not for use in diagnostic procedures.

PROTOCOLS

See our web site at www.scbt.com or our catalog for detailed protocols and support products.



Try **TIS11D (A-3): sc-365908**, our highly recommended monoclonal alternative to TIS11D (P-16).