

TRAPPC10 (C-20): sc-79156

BACKGROUND

TRAPPC10 (transmembrane protein 1), also known as EHOC1 (epilepsy holoprosencephaly candidate 1 protein) or GT334, is a widely expressed 1,259 amino acid protein that may function in vesicular transport. Despite its name, TRAPPC10 does not contain transmembrane domains. It is the human ortholog of the yeast Trs130 protein and its structure and function appears to be conserved. Localizing to the *cis* Golgi apparatus, TRAPPC10 is believed to be involved in transport from the endoplasmic reticulum (ER) to the Golgi functioning as a component of the multisubunit transport protein particle (TRAPP) complex. Mutations in the gene encoding TRAPPC10 may be involved in autoimmune polyglandular disease type 1 or Unverricht-Lundborg disease, an autosomal recessive type of progressive myoclonic epilepsy.

REFERENCES

1. Yamakawa, K., et al. 1995. Isolation and characterization of a candidate gene for progressive myoclonus epilepsy on 21q22.3. *Hum. Mol. Genet.* 4: 709-716.
2. Laliot, M.D., et al. 1996. Cloning the cDNA of human PWP which encodes a protein with WD repeats and maps to 21q22.3. *Genomics* 35: 321-327.
3. Nagamine, K., et al. 1997. Genomic organization and complete nucleotide sequence of the human PWP2 gene on chromosome 21. *Genomics* 42: 528-531.
4. Kudoh, J., et al. 1997. Localization of 16 exons to a 450-kb region involved in the autoimmune polyglandular disease type I (APECED) on human chromosome 21q22.3. *DNA Res.* 4: 45-52.
5. Nagamine, K., et al. 1997. Genomic organization and complete nucleotide sequence of the TMEM1 gene on human chromosome 21q22.3. *Biochem. Biophys. Res. Commun.* 235: 185-190.
6. Lafrenière, R.G., et al. 1997. Genomic structure of the human GT334 (EHOC-1) gene mapping to 21q22.3. *Gene* 198: 313-321.

CHROMOSOMAL LOCATION

Genetic locus: TRAPPC10 (human) mapping to 21q22.3; *Trappc10* (mouse) mapping to 10 C1.

SOURCE

TRAPPC10 (C-20) is an affinity purified rabbit polyclonal antibody raised against a peptide mapping near the C-terminus of TRAPPC10 of human origin.

PRODUCT

Each vial contains 200 µg IgG in 1.0 ml of PBS with < 0.1% sodium azide and 0.1% gelatin.

Blocking peptide available for competition studies, sc-79156 P, (100 µg peptide in 0.5 ml PBS containing < 0.1% sodium azide and 0.2% BSA).

STORAGE

Store at 4° C, ****DO NOT FREEZE****. Stable for one year from the date of shipment. Non-hazardous. No MSDS required.

APPLICATIONS

TRAPPC10 (C-20) is recommended for detection of TRAPPC10 of mouse, rat and human origin by Western Blotting (starting dilution 1:200, dilution range 1:100-1:1000), immunoprecipitation [1-2 µg per 100-500 µg of total protein (1 ml of cell lysate)], immunofluorescence (starting dilution 1:50, dilution range 1:50-1:500) and solid phase ELISA (starting dilution 1:30, dilution range 1:30-1:3000).

TRAPPC10 (C-20) is also recommended for detection of TRAPPC10 in additional species, including canine and bovine.

Suitable for use as control antibody for TRAPPC10 siRNA (h): sc-76682, TRAPPC10 siRNA (m): sc-76683, TRAPPC10 shRNA Plasmid (h): sc-76682-SH, TRAPPC10 shRNA Plasmid (m): sc-76683-SH, TRAPPC10 shRNA (h) Lentiviral Particles: sc-76682-V and TRAPPC10 shRNA (m) Lentiviral Particles: sc-76683-V.

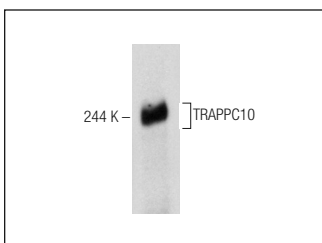
Molecular Weight of TRAPPC10: 142 kDa.

Positive Controls: HeLa nuclear extract: sc-2120.

RECOMMENDED SECONDARY REAGENTS

To ensure optimal results, the following support (secondary) reagents are recommended: 1) Western Blotting: use goat anti-rabbit IgG-HRP: sc-2004 (dilution range: 1:2000-1:100,000) or Cruz Marker™ compatible goat anti-rabbit IgG-HRP: sc-2030 (dilution range: 1:2000-1:5000), Cruz Marker™ Molecular Weight Standards: sc-2035, TBS Blotto A Blocking Reagent: sc-2333 and Western Blotting Luminol Reagent: sc-2048. 2) Immunoprecipitation: use Protein A/G PLUS-Agarose: sc-2003 (0.5 ml agarose/2.0 ml). 3) Immunofluorescence: use goat anti-rabbit IgG-FITC: sc-2012 (dilution range: 1:100-1:400) or goat anti-rabbit IgG-TR: sc-2780 (dilution range: 1:100-1:400) with UltraCruz™ Mounting Medium: sc-24941.

DATA



TRAPPC10 (C-20): sc-79156. Western blot analysis of TRAPPC10 expression in HeLa nuclear extract.

RESEARCH USE

For research use only, not for use in diagnostic procedures.

MONOS
Satisfaction
Guaranteed

Try **TRAPPC10 (RR-18): sc-101259**, our highly recommended monoclonal alternative to TRAPPC10 (C-20).