

# BCLAF1 (E-17): sc-79205

## BACKGROUND

Apoptosis defines a set of cascades which, when initiated, programs the cell to undergo lethal changes such as membrane blebbing, mitochondrial breakdown and DNA fragmentation. Bcl-2 is one of many key regulators of apoptosis which are essential for proper development, tissue homeostasis and protection against foreign pathogens. BCLAF1 (BCL2-associated transcription factor 1), also known as BTF, is a 920 amino acid protein that localizes to both the nucleus and the cytoplasm. Expressed throughout the body, BCLAF1 functions as a death-promoting factor that interacts with and represses the transcription of Bcl-2, thereby influencing the regulation of apoptosis. Overexpression of BCLAF1 results in the relocation of BCLAF1 to the nuclear envelope and the subsequent induction of apoptosis, an event that may occur as a result of DNA damage. Four isoforms of BCLAF1 exist due to alternative splicing events.

## CHROMOSOMAL LOCATION

Genetic locus: BCLAF1 (human) mapping to 6q23.3; Bclaf1 (mouse) mapping to 10 A3.

## SOURCE

BCLAF1 (E-17) is an affinity purified goat polyclonal antibody raised against a peptide mapping within an internal region of BCLAF1 of human origin.

## PRODUCT

Each vial contains 200 µg IgG in 1.0 ml of PBS with < 0.1% sodium azide and 0.1% gelatin.

Blocking peptide available for competition studies, sc-79205 P, (100 µg peptide in 0.5 ml PBS containing < 0.1% sodium azide and 0.2% BSA).

## STORAGE

Store at 4° C, **\*\*DO NOT FREEZE\*\***. Stable for one year from the date of shipment. Non-hazardous. No MSDS required.

## APPLICATIONS

BCLAF1 (E-17) is recommended for detection of BCLAF1 of mouse, rat and human origin by Western Blotting (starting dilution 1:200, dilution range 1:100-1:1000), immunoprecipitation [1-2 µg per 100-500 µg of total protein (1 ml of cell lysate)], immunofluorescence (starting dilution 1:50, dilution range 1:50-1:500) and solid phase ELISA (starting dilution 1:30, dilution range 1:30-1:3000).

BCLAF1 (E-17) is also recommended for detection of BCLAF1 in additional species, including equine, canine, bovine and porcine.

Suitable for use as control antibody for BCLAF1 siRNA (h): sc-72633, BCLAF1 siRNA (m): sc-72634, BCLAF1 shRNA Plasmid (h): sc-72633-SH, BCLAF1 shRNA Plasmid (m): sc-72634-SH, BCLAF1 shRNA (h) Lentiviral Particles: sc-72633-V and BCLAF1 shRNA (m) Lentiviral Particles: sc-72634-V.

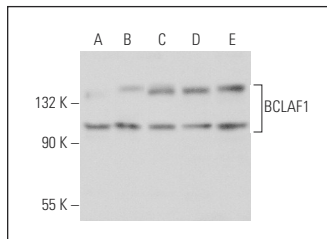
Molecular Weight of BCLAF1 isoforms: 100-150 kDa.

Positive Controls: HeLa whole cell lysate: sc-2200, K-562 whole cell lysate: sc-2203 or Jurkat whole cell lysate: sc-2204.

## RECOMMENDED SECONDARY REAGENTS

To ensure optimal results, the following support (secondary) reagents are recommended: 1) Western Blotting: use donkey anti-goat IgG-HRP: sc-2020 (dilution range: 1:2000-1:100,000) or Cruz Marker™ compatible donkey anti-goat IgG-HRP: sc-2033 (dilution range: 1:2000-1:5000), Cruz Marker™ Molecular Weight Standards: sc-2035, TBS Blotto A Blocking Reagent: sc-2333 and Western Blotting Luminol Reagent: sc-2048. 2) Immunoprecipitation: use Protein A/G PLUS-Agarose: sc-2003 (0.5 ml agarose/2.0 ml). 3) Immunofluorescence: use donkey anti-goat IgG-FITC: sc-2024 (dilution range: 1:100-1:400) or donkey anti-goat IgG-TR: sc-2783 (dilution range: 1:100-1:400) with UltraCruz™ Mounting Medium: sc-24941.

## DATA



BCLAF1 (E-17): sc-79205. Western blot analysis of BCLAF1 expression in HeLa (A), Jurkat (B), MCF7 (C), A549 (D) and K-562 (E) whole cell lysates.

## SELECT PRODUCT CITATIONS

1. Kong, S., et al. 2011. The type III histone deacetylase Sirt1 protein suppresses p300-mediated histone H3 lysine 56 acetylation at Bclaf1 promoter to inhibit T cell activation. *J. Biol. Chem.* 286: 16967-16975.

## RESEARCH USE

For research use only, not for use in diagnostic procedures.

## PROTOCOLS

See our web site at [www.scbt.com](http://www.scbt.com) or our catalog for detailed protocols and support products.

**MONOS**  
Satisfaction  
Guaranteed

Try **BCLAF1 (M33-P5B11): sc-101388** or **BCLAF1 (5): sc-135845**, our highly recommended monoclonal alternatives to BCLAF1 (E-17).