

TLK1 (A-15): sc-79281

BACKGROUND

The Tousled-like kinases (TLK1 and TLK2, also designated PKU- β and PKU- α , respectively) are the human homologs of the Tousled gene from *Arabidopsis thaliana*, which encodes a serine/threonine kinase that is necessary for proper organ morphogenesis. Both TLKs contain a nuclear localization signal and a predicted coiled-coil region in the N-terminal domain. TLK is ubiquitously expressed, and is prevalent in mouse testis, especially in pachytene spermatocytes and round spermatids. It displays a propensity to dimerize through an interaction between its coiled-coil structure and is able to autophosphorylate, as well as phosphorylate exogenous substrates. TLK1 and TLK2 are regulated by the cell cycle, showing maximum activity during S phase. Subsequently, they are thought to regulate the development of multicellular organisms, including playing a key role in spermatogenesis, through a series of phosphorylations.

REFERENCES

- Roe, J.L., et al. 1993. The Tousled gene in *A. thaliana* encodes a protein kinase homolog that is required for leaf and flower development. *Cell* 75: 939-950.
- Yamakawa, A., et al. 1997. cDNA cloning and chromosomal mapping of genes encoding novel protein kinases termed PKU- α and PKU- β , which have nuclear localization signal. *Gene* 202: 193-201.
- Roe, J.L., et al. 1997. Tousled is a nuclear serine/threonine protein kinase that requires a coiled-coil region for oligomerization and catalytic activity. *J. Biol. Chem.* 171: 5838-5845.
- Roe, J.L., et al. 1997. Tousled participates in apical tissue formation during gynoecium development in *Arabidopsis*. *Plant Cell* 9: 335-353.
- Sillje, H.H., et al. 1999. Mammalian homologues of the plant Tousled gene code for cell-cycle-regulated kinases with maximal activities linked to ongoing DNA replication. *EMBO J.* 18: 5691-5702.
- Shalom, S. and Don, J. 1999. Tlk, a novel evolutionarily conserved murine serine threonine kinase, encodes multiple testis transcripts. *Mol. Reprod. Dev.* 52: 392-405.

CHROMOSOMAL LOCATION

Genetic locus: TLK1 (human) mapping to 2q31.1; Tlk1 (mouse) mapping to 2 C2.

SOURCE

TLK1 (A-15) is an affinity purified goat polyclonal antibody raised against a peptide mapping within an internal region of TLK1 of human origin.

PRODUCT

Each vial contains 200 μ g IgG in 1.0 ml of PBS with < 0.1% sodium azide and 0.1% gelatin.

Blocking peptide available for competition studies, sc-79281 P, (100 μ g peptide in 0.5 ml PBS containing < 0.1% sodium azide and 0.2% BSA).

APPLICATIONS

TLK1 (A-15) is recommended for detection of TLK1 of mouse, rat and human origin by Western Blotting (starting dilution 1:200, dilution range 1:100-1:1000), immunoprecipitation [1-2 μ g per 100-500 μ g of total protein (1 ml of cell lysate)], immunofluorescence (starting dilution 1:50, dilution range 1:50-1:500) and solid phase ELISA (starting dilution 1:30, dilution range 1:30-1:3000).

TLK1 (A-15) is also recommended for detection of TLK1 in additional species, including equine, canine, bovine, porcine and avian.

Suitable for use as control antibody for TLK1 siRNA (h): sc-45973, TLK1 siRNA (m): sc-45974, TLK1 shRNA Plasmid (h): sc-45973-SH, TLK1 shRNA Plasmid (m): sc-45974-SH, TLK1 shRNA (h) Lentiviral Particles: sc-45973-V and TLK1 shRNA (m) Lentiviral Particles: sc-45974-V.

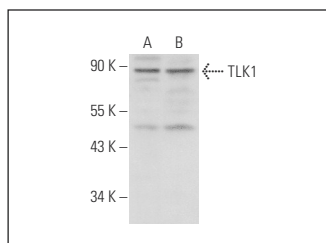
Molecular Weight of TLK1: 90 kDa.

Positive Controls: HeLa nuclear extract: sc-2120, HL-60 whole cell lysate: sc-2209 or Jurkat nuclear extract: sc-2132.

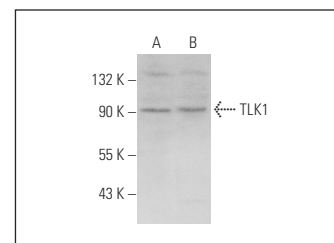
RECOMMENDED SECONDARY REAGENTS

To ensure optimal results, the following support (secondary) reagents are recommended: 1) Western Blotting: use donkey anti-goat IgG-HRP: sc-2020 (dilution range: 1:2000-1:100,000) or Cruz Marker™ compatible donkey anti-goat IgG-HRP: sc-2033 (dilution range: 1:2000-1:5000), Cruz Marker™ Molecular Weight Standards: sc-2035, TBS Blotto A Blocking Reagent: sc-2333 and Western Blotting Luminol Reagent: sc-2048. 2) Immunoprecipitation: use Protein A/G PLUS-Agarose: sc-2003 (0.5 ml agarose/2.0 ml). 3) Immunofluorescence: use donkey anti-goat IgG-FITC: sc-2024 (dilution range: 1:100-1:400) or donkey anti-goat IgG-TR: sc-2783 (dilution range: 1:100-1:400) with UltraCruz™ Mounting Medium: sc-24941.

DATA



TLK1 (A-15): sc-79281. Western blot analysis of TLK1 expression in HeLa (A) and Jurkat (B) nuclear extracts.



TLK1 (A-15): sc-79281. Western blot analysis of TLK1 expression in NIH/3T3 (A) and HL-60 (B) whole cell lysates.

STORAGE

Store at 4° C, **DO NOT FREEZE**. Stable for one year from the date of shipment. Non-hazardous. No MSDS required.

RESEARCH USE

For research use only, not for use in diagnostic procedures.