

CPSF7 (P-20): sc-79426

BACKGROUND

3' ends of eukaryotic mRNAs can undergo processing events that include endonucleolytic cleavage and polyadenylation. Cleavage and polyadenylation specificity factors (CPSF) mediate 3' cleavage of the transcript and subsequent polyadenylation. CPSF7 (cleavage and polyadenylation specific factor 7), also known as MGC9315, FLJ12529 or FLJ39024, is a 471 amino acid nuclear protein belonging to the RRM CPSF6/7 family. As a result of alternative splicing events, two CPSF7 isoforms exist. CPSF7 contains one RRM (RNA recognition motif) domain, and is encoded by a gene which maps to human chromosome 11q12.2. Chromosome 11 houses over 1,400 genes and comprises nearly 4% of the human genome. Jervell and Lange-Nielsen syndrome, Jacobsen syndrome, Niemann-Pick disease, hereditary angioedema and Smith-Lemli-Opitz syndrome are associated with defects in genes that map to chromosome 11.

CHROMOSOMAL LOCATION

Genetic locus: CPSF7 (human) mapping to 11q12.2; Cpsf7 (mouse) mapping to 19 A.

SOURCE

CPSF7 (P-20) is an affinity purified goat polyclonal antibody raised against a peptide mapping within an internal region of CPSF7 of human origin.

PRODUCT

Each vial contains 200 µg IgG in 1.0 ml of PBS with < 0.1% sodium azide and 0.1% gelatin.

Blocking peptide available for competition studies, sc-79426 P, (100 µg peptide in 0.5 ml PBS containing < 0.1% sodium azide and 0.2% BSA).

STORAGE

Store at 4° C, ****DO NOT FREEZE****. Stable for one year from the date of shipment. Non-hazardous. No MSDS required.

APPLICATIONS

CPSF7 (P-20) is recommended for detection of CPSF7 of mouse, rat and human origin by Western Blotting (starting dilution 1:200, dilution range 1:100-1:1000), immunoprecipitation [1-2 µg per 100-500 µg of total protein (1 ml of cell lysate)], immunofluorescence (starting dilution 1:50, dilution range 1:50-1:500) and solid phase ELISA (starting dilution 1:30, dilution range 1:30-1:3000).

CPSF7 (P-20) is also recommended for detection of CPSF7 in additional species, including equine, canine, bovine, porcine and avian.

Suitable for use as control antibody for CPSF7 siRNA (h): sc-72992, CPSF7 siRNA (m): sc-72993, CPSF7 shRNA Plasmid (h): sc-72992-SH, CPSF7 shRNA Plasmid (m): sc-72993-SH, CPSF7 shRNA (h) Lentiviral Particles: sc-72992-V and CPSF7 shRNA (m) Lentiviral Particles: sc-72993-V.

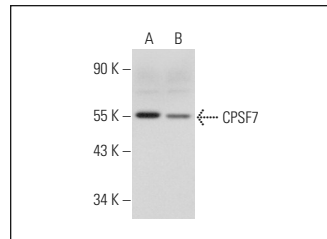
Molecular Weight of CPSF7: 52 kDa.

Positive Controls: HEK293 whole cell lysate: sc-45136, HeLa nuclear extract: sc-2120 or Jurkat whole cell lysate: sc-2204.

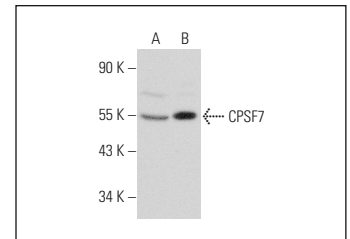
RECOMMENDED SECONDARY REAGENTS

To ensure optimal results, the following support (secondary) reagents are recommended: 1) Western Blotting: use donkey anti-goat IgG-HRP: sc-2020 (dilution range: 1:2000-1:100,000) or Cruz Marker™ compatible donkey anti-goat IgG-HRP: sc-2033 (dilution range: 1:2000-1:5000), Cruz Marker™ Molecular Weight Standards: sc-2035, TBS Blotto A Blocking Reagent: sc-2333 and Western Blotting Luminol Reagent: sc-2048. 2) Immunoprecipitation: use Protein A/G PLUS-Agarose: sc-2003 (0.5 ml agarose/2.0 ml). 3) Immunofluorescence: use donkey anti-goat IgG-FITC: sc-2024 (dilution range: 1:100-1:400) or donkey anti-goat IgG-TR: sc-2783 (dilution range: 1:100-1:400) with UltraCruz™ Mounting Medium: sc-24941.

DATA



CPSF7 (P-20): sc-79426. Western blot analysis of CPSF7 expression in HEK293 (A) and K-562 (B) whole cell lysates.



CPSF7 (P-20): sc-79426. Western blot analysis of CPSF7 expression in Jurkat (A) and HeLa (B) nuclear extracts.

RESEARCH USE

For research use only, not for use in diagnostic procedures.

PROTOCOLS

See our web site at www.scbt.com or our catalog for detailed protocols and support products.

MONOS
Satisfaction
Guaranteed

Try **CPSF7 (A-9): sc-393880**, our highly recommended monoclonal alternative to CPSF7 (P-20).