

CSH1 (S-17): sc-79428

BACKGROUND

Placental lactogens, also referred to as chorionic somatomammotropin hormones, are protein hormones. They are produced in the mammalian placenta and are similar in structure and function to growth hormones. Together, placental lactogens and growth factors play an essential role to assure successful lactation after pregnancy. Placental lactogens also modify the metabolic state of the mother during pregnancy to supply energy to the fetus. Placental lactogen I is a member of the somatotropin/prolactin family of hormones. The proteins in this family are crucial in mammalian growth control. Placental lactogen I is expressed primarily during mid-pregnancy, and it has been reported that DNA methylation regulates its tissue expression in rats. Placental lactogen II is expressed later in pregnancy and, in mice, its secretion is regulated by the inhibitory control of GH, the concentration of which increases rapidly at the beginning of the last half of pregnancy.

REFERENCES

- Owerbach, D., et al. 1980. Genes for growth hormone, chorionic somatomammotropin, and growth hormones-like gene on chromosome 17 in humans. *Science* 209: 289-292.
- Seeburg, P.H. 1982. The human growth hormone gene family: nucleotide sequences show recent divergence and predict a new polypeptide hormone. *DNA* 1: 239-249.
- Barrera-Saldaña, H.A., et al. 1983. Two structurally different genes produce the same secreted human placental lactogen hormone. *J. Biol. Chem.* 258: 3787-3793.
- Selby, M.J., et al. 1984. Analysis of a major human chorionic somatomammotropin gene. Evidence for two functional promoter elements. *J. Biol. Chem.* 259: 13131-13138.
- Hirt, H., et al. 1987. The human growth hormone gene locus: structure, evolution, and allelic variations. *DNA* 6: 59-70.
- Online Mendelian Inheritance in Man, OMIM™. 2003. Johns Hopkins University, Baltimore, MD. MIM Number: 150200. World Wide Web URL: <http://www.ncbi.nlm.nih.gov/omim/>
- Gultice, A.D., et al. 2006. Hypoxia inhibits differentiation of lineage-specific Rcho-1 trophoblast giant cells. *Biol. Reprod.* 74: 1041-1050.

CHROMOSOMAL LOCATION

Genetic locus: CSH1 (human) mapping to 17q23.3.

SOURCE

Placental lactogen I (S-17) is an affinity purified goat polyclonal antibody raised against a peptide mapping within an internal region of Placental lactogen I of human origin.

PRODUCT

Each vial contains 200 µg IgG in 1.0 ml of PBS with < 0.1% sodium azide and 0.1% gelatin.

Blocking peptide available for competition studies, sc-79428 P, (100 µg peptide in 0.5 ml PBS containing < 0.1% sodium azide and 0.2% BSA).

APPLICATIONS

Placental lactogen I (S-17) is recommended for detection of Placental lactogen I of human origin by Western Blotting (starting dilution 1:200, dilution range 1:100-1:1000), immunoprecipitation [1-2 µg per 100-500 µg of total protein (1 ml of cell lysate)], immunofluorescence (starting dilution 1:50, dilution range 1:50-1:500) and solid phase ELISA (starting dilution 1:30, dilution range 1:30-1:3000).

Suitable for use as control antibody for Placental lactogen I siRNA (h): sc-77032, Placental lactogen I shRNA Plasmid (h): sc-77032-SH and Placental lactogen I shRNA (h) Lentiviral Particles: sc-77032-V.

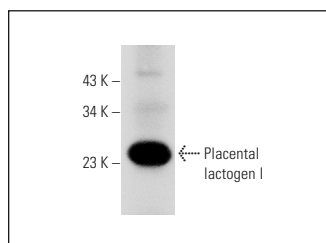
Molecular Weight of Placental lactogen I: 25 kDa.

Positive Controls: human placenta extract: sc-363772.

RECOMMENDED SECONDARY REAGENTS

To ensure optimal results, the following support (secondary) reagents are recommended: 1) Western Blotting: use donkey anti-goat IgG-HRP: sc-2020 (dilution range: 1:2000-1:100,000) or Cruz Marker™ compatible donkey anti-goat IgG-HRP: sc-2033 (dilution range: 1:2000-1:5000), Cruz Marker™ Molecular Weight Standards: sc-2035, TBS Blotto A Blocking Reagent: sc-2333 and Western Blotting Luminol Reagent: sc-2048. 2) Immunoprecipitation: use Protein A/G PLUS-Agarose: sc-2003 (0.5 ml agarose/2.0 ml). 3) Immunofluorescence: use donkey anti-goat IgG-FITC: sc-2024 (dilution range: 1:100-1:400) or donkey anti-goat IgG-TR: sc-2783 (dilution range: 1:100-1:400) with UltraCruz™ Mounting Medium: sc-24941.

DATA



Placental lactogen I (S-17): sc-79428. Western blot analysis of Placental lactogen I expression in human placenta tissue extract.

STORAGE

Store at 4° C, **DO NOT FREEZE**. Stable for one year from the date of shipment. Non-hazardous. No MSDS required.

RESEARCH USE

For research use only, not for use in diagnostic procedures.

PROTOCOLS

See our web site at www.scbt.com or our catalog for detailed protocols and support products.