

PPIH (C-15): sc-79697

BACKGROUND

PPIH (peptidylprolyl isomerase H (cyclophilin H)), also known as PPlase H, rotamase H, CypH, CYP20 or USA-CYP (U-snRNP-associated cyclophilin SnuCyp-20), is a 177 amino acid protein that belongs to the cyclophilin-type PPlase family. PPIH may accelerate the folding of proteins and catalyzes the *cis-trans* isomerization of proline imidic peptide bonds in oligopeptides. PPIH is thought to participate in pre-mRNA splicing with processing factors PRPF3, PRPF4 and PRPF18 and may be involved in the assembly of the U4/U5/U6 tri-snRNP complex. Considered a protein chaperone, PPIH possesses PPlase activity and mediates the interactions between different proteins inside the spliceosome. PPIH contains one PPlase cyclophilin-type domain and is inhibited by cyclosporin A.

CHROMOSOMAL LOCATION

Genetic locus: PPIH (human) mapping to 1p34.2; Ppih (mouse) mapping to 4 D2.1.

SOURCE

PPIH (C-15) is an affinity purified goat polyclonal antibody raised against a peptide mapping at the C-terminus of PPIH of human origin.

PRODUCT

Each vial contains 200 µg IgG in 1.0 ml of PBS with < 0.1% sodium azide and 0.1% gelatin.

Blocking peptide available for competition studies, sc-79697 P, (100 µg peptide in 0.5 ml PBS containing < 0.1% sodium azide and 0.2% BSA).

Available as TransCruz reagent for Gel Supershift and ChIP applications, sc-79697 X, 200 µg/0.1 ml.

APPLICATIONS

PPIH (C-15) is recommended for detection of PPIH of mouse, rat and human origin by Western Blotting (starting dilution 1:200, dilution range 1:100-1:1000), immunoprecipitation [1-2 µg per 100-500 µg of total protein (1 ml of cell lysate)], immunofluorescence (starting dilution 1:50, dilution range 1:50-1:500) and solid phase ELISA (starting dilution 1:30, dilution range 1:30-1:3000).

PPIH (C-15) is also recommended for detection of PPIH in additional species, including equine, canine, bovine, porcine and avian.

Suitable for use as control antibody for PPIH siRNA (h): sc-76207, PPIH siRNA (m): sc-76208, PPIH shRNA Plasmid (h): sc-76207-SH, PPIH shRNA Plasmid (m): sc-76208-SH, PPIH shRNA (h) Lentiviral Particles: sc-76207-V and PPIH shRNA (m) Lentiviral Particles: sc-76208-V.

PPIH (C-15) X TransCruz antibody is recommended for Gel Supershift and ChIP applications.

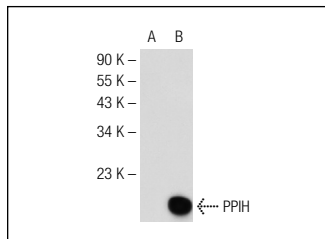
Molecular Weight of PPIH: 20 kDa.

Positive Controls: PPIH (h3): 293T Lysate: sc-110830 or PPIH (m): 293T Lysate: sc-125851.

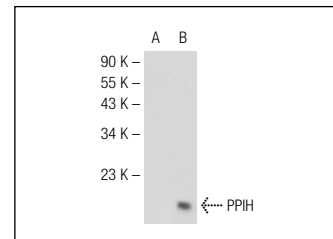
RECOMMENDED SECONDARY REAGENTS

To ensure optimal results, the following support (secondary) reagents are recommended: 1) Western Blotting: use donkey anti-goat IgG-HRP: sc-2020 (dilution range: 1:2000-1:100,000) or Cruz Marker™ compatible donkey anti-goat IgG-HRP: sc-2033 (dilution range: 1:2000-1:5000), Cruz Marker™ Molecular Weight Standards: sc-2035, TBS Blotto A Blocking Reagent: sc-2333 and Western Blotting Luminol Reagent: sc-2048. 2) Immunoprecipitation: use Protein A/G PLUS-Agarose: sc-2003 (0.5 ml agarose/2.0 ml). 3) Immunofluorescence: use donkey anti-goat IgG-FITC: sc-2024 (dilution range: 1:100-1:400) or donkey anti-goat IgG-TR: sc-2783 (dilution range: 1:100-1:400) with UltraCruz™ Mounting Medium: sc-24941.

DATA



PPIH (C-15): sc-79697. Western blot analysis of PPIH expression in non-transfected: sc-117752 (A) and mouse PPIH transfected: sc-125851 (B) 293T whole cell lysates.



PPIH (C-15): sc-79697. Western blot analysis of PPIH expression in non-transfected: sc-117752 (A) and human PPIH transfected: sc-110830 (B) 293T whole cell lysates.

STORAGE

Store at 4° C, ****DO NOT FREEZE****. Stable for one year from the date of shipment. Non-hazardous. No MSDS required.

RESEARCH USE

For research use only, not for use in diagnostic procedures.

PROTOCOLS

See our web site at www.scbt.com or our catalog for detailed protocols and support products.



Try **PPIH (C-1): sc-377217** or **PPIH (C-5): sc-390798**, our highly recommended monoclonal alternatives to PPIH (C-15).