

SOHLH1 (M-18): sc-79727

BACKGROUND

SOHLH1 (spermatogenesis and oogenesis specific basic helix-loop-helix 1), also known as NOHLH or TEB2, is a 328 amino acid protein that localizes to both the nucleus and the cytoplasm and contains one bHLH domain through which it may function as a transcription factor during oogenesis and spermatogenesis. The gene encoding SOHLH1 maps to human chromosome 9, which houses over 900 genes and comprises nearly 4% of the human genome. Hereditary hemorrhagic telangiectasia, which is characterized by harmful vascular defects, and Familial dysautonomia, are both associated with chromosome 9. Notably, chromosome 9 encompasses the largest interferon family gene cluster.

REFERENCES

1. Ballow, D., Meistrich, M.L., Matzuk, M. and Rajkovic, A. 2006. SOHLH1 is essential for spermatogonial differentiation. *Dev. Biol.* 294: 161-167.
2. Pangas, S.A., Choi, Y., Ballow, D.J., Zhao, Y., Westphal, H., Matzuk, M.M. and Rajkovic, A. 2006. Oogenesis requires germ cell-specific transcriptional regulators SOHLH1 and LHX8. *Proc. Natl. Acad. Sci. USA* 103: 8090-8095.
3. Suzumori, N., Pangas, S.A. and Rajkovic, A. 2007. Candidate genes for premature ovarian failure. *Curr. Med. Chem.* 14: 353-357.
4. Dadoune, J.P. 2007. New insights into male gametogenesis: what about the spermatogonial stem cell niche? *Folia Histochem. Cytobiol.* 45: 141-147.
5. Zheng, P. and Dean, J. 2007. Oocyte-specific genes affect folliculogenesis, fertilization, and early development. *Semin. Reprod. Med.* 25: 243-251.
6. Online Mendelian Inheritance in Man, OMIM[™]. 2007. Johns Hopkins University, Baltimore, MD. MIM Number: 610224. World Wide Web URL: <http://www.ncbi.nlm.nih.gov/omim/>
7. Choi, Y., Yuan, D. and Rajkovic, A. 2008. Germ cell-specific transcriptional regulator SOHLH2 is essential for early mouse folliculogenesis and oocyte-specific gene expression. *Biol. Reprod.* 79: 1176-1182.
8. Toyoda, S., Miyazaki, T., Miyazaki, S., Yoshimura, T., Yamamoto, M., Tashiro, F., Yamato, E. and Miyazaki, J. 2009. SOHLH2 affects differentiation of KIT positive oocytes and spermatogonia. *Dev. Biol.* 325: 238-248.

CHROMOSOMAL LOCATION

Genetic locus: *Sohlh1* (mouse) mapping to 2 A3.

SOURCE

SOHLH1 (M-18) is an affinity purified goat polyclonal antibody raised against a peptide mapping within an internal region of SOHLH1 of mouse origin.

PRODUCT

Each vial contains 200 µg IgG in 1.0 ml of PBS with < 0.1% sodium azide and 0.1% gelatin.

Blocking peptide available for competition studies, sc-79727 P, (100 µg peptide in 0.5 ml PBS containing < 0.1% sodium azide and 0.2% BSA).

APPLICATIONS

SOHLH1 (M-18) is recommended for detection of SOHLH1 of mouse and rat origin by Western Blotting (starting dilution 1:200, dilution range 1:100-1:1000), immunoprecipitation [1-2 µg per 100-500 µg of total protein (1 ml of cell lysate)], immunofluorescence (starting dilution 1:50, dilution range 1:50-1:500) and solid phase ELISA (starting dilution 1:30, dilution range 1:30-1:3000).

Suitable for use as control antibody for SOHLH1 siRNA (m): sc-76538, SOHLH1 shRNA Plasmid (m): sc-76538-SH and SOHLH1 shRNA (m) Lentiviral Particles: sc-76538-V.

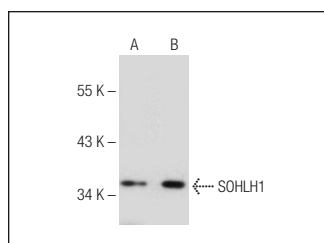
Molecular Weight of SOHLH1: 34 kDa.

Positive Controls: F9 cell lysate: sc-2245 or NIH/3T3 whole cell lysate: sc-2210.

RECOMMENDED SECONDARY REAGENTS

To ensure optimal results, the following support (secondary) reagents are recommended: 1) Western Blotting: use donkey anti-goat IgG-HRP: sc-2020 (dilution range: 1:2000-1:100,000) or Cruz Marker[™] compatible donkey anti-goat IgG-HRP: sc-2033 (dilution range: 1:2000-1:5000), Cruz Marker[™] Molecular Weight Standards: sc-2035, TBS Blotto A Blocking Reagent: sc-2333 and Western Blotting Luminol Reagent: sc-2048. 2) Immunoprecipitation: use Protein A/G PLUS-Agarose: sc-2003 (0.5 ml agarose/2.0 ml). 3) Immunofluorescence: use donkey anti-goat IgG-FITC: sc-2024 (dilution range: 1:100-1:400) or donkey anti-goat IgG-TR: sc-2783 (dilution range: 1:100-1:400) with UltraCruz[™] Mounting Medium: sc-24941.

DATA



SOHLH1 (M-18): sc-79727. Western blot analysis of SOHLH1 expression in F9 (A) and NIH/3T3 (B) whole cell lysates.

STORAGE

Store at 4° C, ****DO NOT FREEZE****. Stable for one year from the date of shipment. Non-hazardous. No MSDS required.

RESEARCH USE

For research use only, not for use in diagnostic procedures.

PROTOCOLS

See our web site at www.scbt.com or our catalog for detailed protocols and support products.