

# CLP36 (N-14): sc-79909

## BACKGROUND

CLP36, also known as PDLIM1, CLIM-1 or Elfin, is a 329 amino acid cytoplasmic protein that associates with actin stress fibers at the cytoskeleton. Expressed at high levels in skeletal muscle and heart and at lower levels in colon, small intestine, spleen, lung, placenta, kidney, liver, thymus and pancreas, CLP36 functions as a cytoskeletal protein that is thought to act as an adaptor, bringing target proteins to the cytoskeleton. Specifically, CLP36 interacts with Clik1 (a kinase) and recruits Clik1 to  $\alpha$ -actinin-1, thereby facilitating the association of Clik1 with actin stress fibers. CLP36 contains one PDZ domain and one LIM zinc-binding domain through which it conveys its protein-protein binding capabilities. Human CLP36 shares 88% sequence similarity with its rat counterpart, suggesting a conserved function between species.

## CHROMOSOMAL LOCATION

Genetic locus: PDLIM1 (human) mapping to 10q23.33; Pdlim1 (mouse) mapping to 19 C3.

## SOURCE

CLP36 (N-14) is an affinity purified goat polyclonal antibody raised against a peptide mapping at the N-terminus of CLP36 of human origin.

## PRODUCT

Each vial contains 200  $\mu$ g IgG in 1.0 ml of PBS with < 0.1% sodium azide and 0.1% gelatin.

Blocking peptide available for competition studies, sc-79909 P, (100  $\mu$ g peptide in 0.5 ml PBS containing < 0.1% sodium azide and 0.2% BSA).

## STORAGE

Store at 4° C, **\*\*DO NOT FREEZE\*\***. Stable for one year from the date of shipment. Non-hazardous. No MSDS required.

## APPLICATIONS

CLP36 (N-14) is recommended for detection of CLP36 of mouse, rat and human origin by Western Blotting (starting dilution 1:200, dilution range 1:100-1:1000), immunoprecipitation [1-2  $\mu$ g per 100-500  $\mu$ g of total protein (1 ml of cell lysate)], immunofluorescence (starting dilution 1:50, dilution range 1:50-1:500) and solid phase ELISA (starting dilution 1:30, dilution range 1:30-1:3000).

CLP36 (N-14) is also recommended for detection of CLP36 in additional species, including equine, bovine and porcine.

Suitable for use as control antibody for CLP36 siRNA (h): sc-72927, CLP36 siRNA (m): sc-72928, CLP36 shRNA Plasmid (h): sc-72927-SH, CLP36 shRNA Plasmid (m): sc-72928-SH, CLP36 shRNA (h) Lentiviral Particles: sc-72927-V and CLP36 shRNA (m) Lentiviral Particles: sc-72928-V.

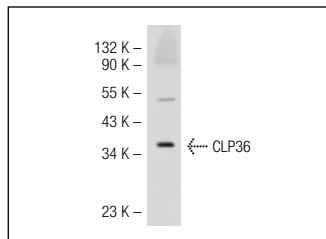
Molecular Weight of CLP36: 36 kDa.

Positive Controls: HeLa whole cell lysate: sc-2200 or NIH/3T3 whole cell lysate: sc-2210.

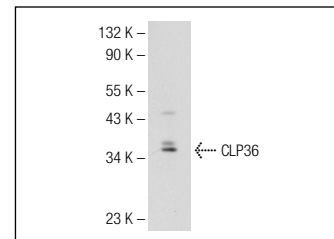
## RECOMMENDED SECONDARY REAGENTS

To ensure optimal results, the following support (secondary) reagents are recommended: 1) Western Blotting: use donkey anti-goat IgG-HRP: sc-2020 (dilution range: 1:2000-1:100,000) or Cruz Marker™ compatible donkey anti-goat IgG-HRP: sc-2033 (dilution range: 1:2000-1:5000), Cruz Marker™ Molecular Weight Standards: sc-2035, TBS Blotto A Blocking Reagent: sc-2333 and Western Blotting Luminol Reagent: sc-2048. 2) Immunoprecipitation: use Protein A/G PLUS-Agarose: sc-2003 (0.5 ml agarose/2.0 ml). 3) Immunofluorescence: use donkey anti-goat IgG-FITC: sc-2024 (dilution range: 1:100-1:400) or donkey anti-goat IgG-TR: sc-2783 (dilution range: 1:100-1:400) with UltraCruz™ Mounting Medium: sc-24941.

## DATA



CLP36 (N-14): sc-79909. Western blot analysis of CLP36 expression in HeLa whole cell lysate.



CLP36 (N-14): sc-79909. Western blot analysis of CLP36 expression in NIH/3T3 whole cell lysate.

## RESEARCH USE

For research use only, not for use in diagnostic procedures.

## PROTOCOLS

See our web site at [www.scbt.com](http://www.scbt.com) or our catalog for detailed protocols and support products.



Try **CLP36 (H-8): sc-398899** or **CLP36 (B-9): sc-393084**, our highly recommended monoclonal alternatives to CLP36 (N-14).