

MSP58 (K-20): sc-79985

BACKGROUND

MSP58, also known as MCRS1 (microspherule protein 1), P78 or INO80Q, is a 462 amino acid protein that localizes to the nucleus and contains one FHA domain. Expressed at high levels during the S phase of the cell cycle and present in testis, prostate, thymus, spleen and colon, MSP58 functions to modulate the transcriptional activity of Daxx (a transcriptional repressor) by recruiting Daxx to the nucleolus. Additionally, MSP58 may play a role in the inhibition of TERT telomerase activity, further implicating MSP58 as an important protein in transcriptional regulation. The gene encoding MSP58 maps to human chromosome 12 and is expressed as multiple alternatively spliced isoforms. Encoding over 1,100 genes within 132 million bases, chromosome 12 makes up about 4.5% of the human genome and is associated with hypochondrogenesis, achondrogenesis and Kniest dysplasia.

CHROMOSOMAL LOCATION

Genetic locus: MCRS1 (human) mapping to 12q13.12; Mcrs1 (mouse) mapping to 15 F1.

SOURCE

MSP58 (K-20) is an affinity purified goat polyclonal antibody raised against a peptide mapping within an internal region of MSP58 of human origin.

PRODUCT

Each vial contains 200 µg IgG in 1.0 ml of PBS with < 0.1% sodium azide and 0.1% gelatin. Also available as TransCruz reagent for Gel Supershift and ChIP applications, sc-79985 X, 200 µg/0.1 ml.

Blocking peptide available for competition studies, sc-79985 P, (100 µg peptide in 0.5 ml PBS containing < 0.1% sodium azide and 0.2% BSA).

APPLICATIONS

MSP58 (K-20) is recommended for detection of MSP58 of mouse, rat and human origin by Western Blotting (starting dilution 1:200, dilution range 1:100-1:1000), immunoprecipitation [1-2 µg per 100-500 µg of total protein (1 ml of cell lysate)], immunofluorescence (starting dilution 1:50, dilution range 1:50-1:500) and solid phase ELISA (starting dilution 1:30, dilution range 1:30-1:3000).

MSP58 (K-20) is also recommended for detection of MSP58 in additional species, including equine, canine, bovine and avian.

Suitable for use as control antibody for MSP58 siRNA (h): sc-75838, MSP58 siRNA (m): sc-75839, MSP58 shRNA Plasmid (h): sc-75838-SH, MSP58 shRNA Plasmid (m): sc-75839-SH, MSP58 shRNA (h) Lentiviral Particles: sc-75838-V and MSP58 shRNA (m) Lentiviral Particles: sc-75839-V.

MSP58 (K-20) X TransCruz antibody is recommended for Gel Supershift and ChIP applications.

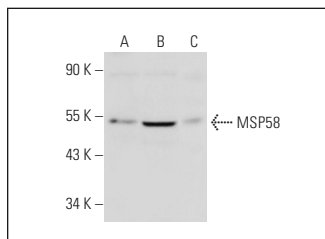
Molecular Weight of MSP58: 58 kDa.

Positive Controls: HeLa whole cell lysate: sc-2200, Jurkat whole cell lysate: sc-2204 or F9 cell lysate: sc-2245.

RECOMMENDED SECONDARY REAGENTS

To ensure optimal results, the following support (secondary) reagents are recommended: 1) Western Blotting: use donkey anti-goat IgG-HRP: sc-2020 (dilution range: 1:2000-1:100,000) or Cruz Marker™ compatible donkey anti-goat IgG-HRP: sc-2033 (dilution range: 1:2000-1:5000), Cruz Marker™ Molecular Weight Standards: sc-2035, TBS Blotto A Blocking Reagent: sc-2333 and Western Blotting Luminol Reagent: sc-2048. 2) Immunoprecipitation: use Protein A/G PLUS-Agarose: sc-2003 (0.5 ml agarose/2.0 ml). 3) Immunofluorescence: use donkey anti-goat IgG-FITC: sc-2024 (dilution range: 1:100-1:400) or donkey anti-goat IgG-TR: sc-2783 (dilution range: 1:100-1:400) with UltraCruz™ Mounting Medium: sc-24941.

DATA



MSP58 (K-20): sc-79985. Western blot analysis of MSP58 expression in HeLa (A), Jurkat (B) and F9 (C) whole cell lysates.

STORAGE

Store at 4° C, ****DO NOT FREEZE****. Stable for one year from the date of shipment. Non-hazardous. No MSDS required.

RESEARCH USE

For research use only, not for use in diagnostic procedures.

PROTOCOLS

See our web site at www.scbt.com or our catalog for detailed protocols and support products.



Try **MSP58 (B-5): sc-376569**, our highly recommended monoclonal alternative to MSP58 (K-20).