

Mystique (E-15): sc-79988

BACKGROUND

Mystique, also known as PDLIM2 (PDZ and LIM domain protein 2), PP6345 or SLIM, is a 352 amino acid protein that contains one LIM zinc-binding domain and one PDZ domain. Expressed as four isoforms that localize to either the cytoplasm/cytoskeleton or to the nucleus, Mystique is thought to function as an adapter protein that promotes cell attachment at the Actin cytoskeleton. Mystique interacts with α -actinin-1 and α -actinin-4 and, in addition to its role in cell-cell interactions, is necessary for the proper migration of epithelial cells. Overexpression of Mystique suppresses anchorage-independent growth and enhances cell adhesion to Fibronectin and collagen (COL), an event that may facilitate the migratory capabilities of certain tumors. Due to its ability to enhance tumor migration, Mystique is thought to play a role in the progression of breast cancer and other malignant carcinomas.

CHROMOSOMAL LOCATION

Genetic locus: PDLIM2 (human) mapping to 8p21.3; Pdlim2 (mouse) mapping to 14 D2.

SOURCE

Mystique (E-15) is an affinity purified goat polyclonal antibody raised against a peptide mapping near the N-terminus of Mystique of human origin.

PRODUCT

Each vial contains 200 μ g IgG in 1.0 ml of PBS with < 0.1% sodium azide and 0.1% gelatin.

Blocking peptide available for competition studies, sc-79988 P, (100 μ g peptide in 0.5 ml PBS containing < 0.1% sodium azide and 0.2% stabilizer protein).

RESEARCH USE

For research use only, not for use in diagnostic procedures.

APPLICATIONS

Mystique (E-15) is recommended for detection of Mystique of mouse, rat and human origin by Western Blotting (starting dilution 1:200, dilution range 1:100-1:1000), immunoprecipitation [1-2 μ g per 100-500 μ g of total protein (1 ml of cell lysate)], immunofluorescence (starting dilution 1:50, dilution range 1:50-1:500) and solid phase ELISA (starting dilution 1:30, dilution range 1:30-1:3000).

Mystique (E-15) is also recommended for detection of Mystique in additional species, including equine, canine, bovine and porcine.

Suitable for use as control antibody for Mystique siRNA (h): sc-75856, Mystique siRNA (m): sc-75857, Mystique shRNA Plasmid (h): sc-75856-SH, Mystique shRNA Plasmid (m): sc-75857-SH, Mystique shRNA (h) Lentiviral Particles: sc-75856-V and Mystique shRNA (m) Lentiviral Particles: sc-75857-V.

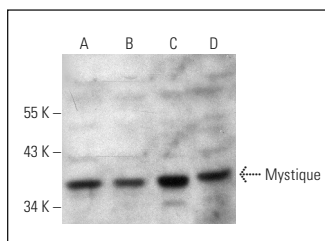
Molecular Weight of Mystique: 38 kDa.

Positive Controls: HeLa whole cell lysate: sc-2200, JAR cell lysate: sc-2276 or MCF7 whole cell lysate: sc-2206.

RECOMMENDED SECONDARY REAGENTS

To ensure optimal results, the following support (secondary) reagents are recommended: 1) Western Blotting: use donkey anti-goat IgG-HRP: sc-2020 (dilution range: 1:2000-1:100,000) or Cruz Marker™ compatible donkey anti-goat IgG-HRP: sc-2033 (dilution range: 1:2000-1:5000), Cruz Marker™ Molecular Weight Standards: sc-2035, TBS Blotto A Blocking Reagent: sc-2333 and Western Blotting Luminol Reagent: sc-2048. 2) Immunoprecipitation: use Protein A/G PLUS-Agarose: sc-2003 (0.5 ml agarose/2.0 ml). 3) Immunofluorescence: use donkey anti-goat IgG-FITC: sc-2024 (dilution range: 1:100-1:400) or donkey anti-goat IgG-TR: sc-2783 (dilution range: 1:100-1:400) with UltraCruz™ Mounting Medium: sc-24941.

DATA



Mystique (E-15): sc-79988. Western blot analysis of Mystique expression in JAR (A), HeLa (B), ACHN (C) and MCF7 (D) whole cell lysates.

STORAGE

Store at 4° C, ****DO NOT FREEZE****. Stable for one year from the date of shipment. Non-hazardous. No MSDS required.

PROTOCOLS

See our web site at www.scbt.com or our catalog for detailed protocols and support products.



Try **Mystique (B-8): sc-515630**, our highly recommended monoclonal alternative to Mystique (E-15).