

Pro-COL1A2 (002-04-1): sc-80497

BACKGROUND

The extensive family of COL gene products (collagens) is composed of several chain types, including fibril-forming interstitial collagens (Types I, II, III and V) and basement membrane collagens (Type IV), each type containing multiple isoforms. Collagens are fibrous, extracellular matrix proteins with high tensile strength and are the major components of connective tissue, such as tendons and cartilage. All collagens contain a triple helix domain and frequently show lateral self-association in order to form complex connective tissues. Several collagens also play a role in cell adhesion, important for maintaining normal tissue architecture and function.

REFERENCES

- Bellamy, G. and Bornstein, P. 1971. Evidence for procollagen, a biosynthetic precursors of collagen. *Proc. Natl. Acad. Sci. USA* 68: 1138-1142.
- Church, R.L., Pfeiffer, S.E. and Tanzer, M.L. 1971. Collagen biosynthesis: synthesis and secretion of a high molecular weight collagen precursor (procollagen). *Proc. Natl. Acad. Sci. USA* 68: 2638-2642.
- Bornstein, P., Ehrlich, H.P. and Wyke, A.W. 1972. Procollagen: conversion of the precursor to collagen by a neutral protease. *Science* 175: 544-546.
- Bateman, J.F., Lamande, S.R. and Ramshaw, J.A.M. 1996. Collagen superfamily. In Comper, W.D., ed., *Extracellular Matrix, Vol 2: Molecular Components and Interactions*. Amsterdam: Harwood Academic Publishers, 2: 22-67.
- McCarthy, J.B., Vachhani, B. and Iida, J. 1996. Cell adhesion to collagenous matrices. *Biopolymers* 40: 371-381.
- Engel, J. 1997. Versatile collagens in invertebrates. *Science* 277: 1785-1786.
- Cremer, M.A., Rosloniec, E.F. and Kang, A.H. 1998. The cartilage collagens: a review of their structure, organization, and role in the pathogenesis of experimental arthritis in animals and in human rheumatic disease. *J. Mol. Med.* 76: 275-288.
- Boskey, A.L., Wright, T.M. and Blank, R.D. 1999. Collagen and bone strength. *J. Bone Miner. Res.* 14: 330-335.
- Alberio, L. and Dale, G.L. 1999. Platelet-collagen interactions: membrane receptors and intracellular signaling pathways. *Eur. J. Clin. Invest.* 29: 1066-1076.

CHROMOSOMAL LOCATION

Genetic locus: COL1A1 (human) mapping to 17q21.33.

SOURCE

Pro-COL1A2 (002-04-1) is a mouse monoclonal antibody raised against human Procollagen Type I purified from second trimester amniotic fluid.

PRODUCT

Each vial contains 100 µg IgG₁ in 1.0 ml of PBS with < 0.1% sodium azide and 0.1% gelatin.

APPLICATIONS

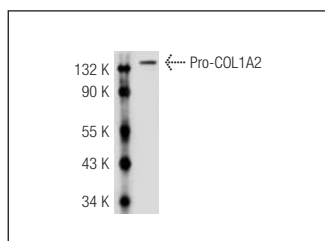
Pro-COL1A2 (002-04-1) is recommended for detection of Procollagen Type I α2 of human origin by Western Blotting (starting dilution 1:200, dilution range 1:100-1:1000), immunoprecipitation [1-2 µg per 100-500 µg of total protein (1 ml of cell lysate)] and solid phase ELISA (starting dilution 1:30, dilution range 1:30-1:3000).

Molecular Weight of Pro-COL1A2: 140-210 kDa.

RECOMMENDED SECONDARY REAGENTS

To ensure optimal results, the following support (secondary) reagents are recommended: 1) Western Blotting: use goat anti-mouse IgG-HRP: sc-2005 (dilution range: 1:2000-1:32,000) or Cruz Marker™ compatible goat anti-mouse IgG-HRP: sc-2031 (dilution range: 1:2000-1:5000), Cruz Marker™ Molecular Weight Standards: sc-2035, TBS Blotto A Blocking Reagent: sc-2333 and Western Blotting Luminol Reagent: sc-2048. 2) Immunoprecipitation: use Protein A/G PLUS-Agarose: sc-2003 (0.5 ml agarose/2.0 ml).

DATA



Pro-COL1A2 (002-04-1): sc-80497. Western blot analysis of Pro-COL1A2 expression in CCD-1064Sk whole cell lysate.

STORAGE

Store at 4° C, ****DO NOT FREEZE****. Stable for one year from the date of shipment. Non-hazardous. No MSDS required.

RESEARCH USE

For research use only, not for use in diagnostic procedures.

PROTOCOLS

See our web site at www.scbt.com or our catalog for detailed protocols and support products.