

BRD1 (2086C1a): sc-81058

BACKGROUND

BRD1 (Bromodomain-containing protein 1, Peregrin-like protein) is a 1,058 amino acid protein encoded by the human gene BRD1. BRD1, like Peregrin, is a nuclear protein that contains one bromo domain, one PHD-type zinc finger and one PWWP domain. Peregrin is a possible transcription activator expressed at high levels in testis. The zinc finger and leucine zipper domains of Peregrin and BRD1 have significant homology to those of AF-10 and MLLT6, suggesting they could be a target for chromosome translocation. Chromosomal aberration involving AF-10 is associated with acute leukemias, the result of which being a rogue activator protein. Chromosome 22q12-13, the region containing BRD1, may also contain one or more susceptibility genes for schizophrenia (SZ) and bipolar affective disorder (BPD).

REFERENCES

- Gregorini, A., Sahin, F.I., Lillington, D.M., Meerabux, J., Saha, V., McCullagh, P., Bocci, M., Menevse, S., Papa, S. and Young, B.D. 1996. Gene BR140, which is related to AF10 and AF17, maps to chromosome band 3p25. *Genes Chromosomes Cancer* 17: 269-272.
- Linder, B., Jones, L.K., Chaplin, T., Mohd-Sarip, A., Heinlein, U.A., Young, B.D. and Saha, V. 1999. Expression pattern and cellular distribution of the murine homologue of AF10. *Biochim. Biophys. Acta* 1443: 285-296.
- McCullagh, P., Chaplin, T., Meerabux, J., Grenzeliass, D., Lillington, D., Poulson, R., Gregorini, A., Saha, V. and Young, B.D. 2000. The cloning, mapping and expression of a novel gene, BRL, related to the AF10 leukaemia gene. *Oncogene* 18: 7442-7452.
- Loeb, C.R., Harris, J.L. and Craik, C.S. 2006. Granzyme B proteolyzes receptors important to proliferation and survival, tipping the balance toward apoptosis. *J. Biol. Chem.* 281: 28326-28335.
- Severinsen, J.E., Bjarkam, C.R., Kiaer-Larsen, S., Olsen, I.M., Nielsen, M.M., Blechingberg, J., Nielsen, A.L., Holm, I.E., Foldager, L., Young, B.D., Muir, W.J., Blackwood, D.H., Corydon, T.J., Mors, O. and Børglum, A.D. 2006. Evidence implicating BRD1 with brain development and susceptibility to both schizophrenia and bipolar affective disorder. *Mol. Psychiatry* 11: 1126-1138.
- Caudell, D. and Aplan, P.D. 2008. The role of CALM-AF10 gene fusion in acute leukemia. *Leukemia* 22: 678-685.

CHROMOSOMAL LOCATION

Genetic locus: BRD1 (human) mapping to 22q13.33.

SOURCE

BRD1 (2086C1a) is a mouse monoclonal antibody raised against a recombinant protein corresponding to a region near the C-terminus of BMS1 of human origin.

PRODUCT

Each vial contains 100 µg IgG₁ in 1.0 ml of PBS with < 0.1% sodium azide and 1.0% stabilizer protein.

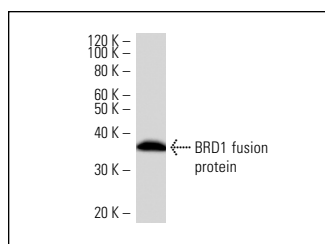
APPLICATIONS

BRD1 (2086C1a) is recommended for detection of BRD1 of human origin by Western Blotting (starting dilution 1:200, dilution range 1:100-1:1000) and immunoprecipitation [1-2 µg per 100-500 µg of total protein (1 ml of cell lysate)].

Suitable for use as control antibody for BRD1 siRNA (h): sc-72663, BRD1 shRNA Plasmid (h): sc-72663-SH and BRD1 shRNA (h) Lentiviral Particles: sc-72663-V.

Molecular Weight of BRD1: 120 kDa.

DATA



BRD1 (2086C1a): sc-81058 Western Blot analysis of human recombinant BRD1 fusion protein.

STORAGE

Store at 4° C, ****DO NOT FREEZE****. Stable for one year from the date of shipment. Non-hazardous. No MSDS required.

RESEARCH USE

For research use only, not for use in diagnostic procedures.

PROTOCOLS

See our web site at www.scbt.com for detailed protocols and support products.