

DGCR14 (2264C3a): sc-81079

BACKGROUND

DGCR14 (DiGeorge syndrome critical region 14, ES2 protein) is a 476 amino acid nuclear protein that belongs to the DGCR14 family. DGCR14 is believed to play a part in the etiology of the velocardiofacial/DiGeorge syndrome (VCF/DGS), a developmental disorder characterized by structural and functional palate anomalies, conotruncal cardiac malformations, immunodeficiency, hypocalcemia and typical facial anomalies. Most cases result from a deletion of chromosome 22q11.21 (DiGeorge syndrome chromosome region, or DGCR). This protein localizes to the nucleus, and co-purifies with C complex spliceosomes.

REFERENCES

- Rizzu, P., Lindsay, E.A., Taylor, C., O'Donnell, H., Levy, A., Scambler, P. and Baldini, A. 1996. Cloning and comparative mapping of a gene from the commonly deleted region of DiGeorge and Velocardiofacial syndromes conserved in *C. elegans*. *Mamm. Genome* 7: 639-643.
- Gong, W., Emanuel, B.S., Galili, N., Kim, D.H., Roe, B., Driscoll, D.A. and Budarf, M.L. 1997. Structural and mutational analysis of a conserved gene (DGSI) from the minimal DiGeorge syndrome critical region. *Hum. Mol. Genet.* 6: 267-276.
- Chieffo, C., Garvey, N., Gong, W., Roe, B., Zhang, G., Silver, L., Emanuel, B.S. and Budarf, M.L. 1997. Isolation and characterization of a gene from the DiGeorge chromosomal region homologous to the mouse *Tbx1* gene. *Genomics* 43: 267-277.
- Lindsay, E.A., Harvey, E.L., Scambler, P.J. and Baldini, A. 1998. ES2, a gene deleted in DiGeorge syndrome, encodes a nuclear protein and is expressed during early mouse development, where it shares an expression domain with a Goosecoid-like gene. *Hum. Mol. Genet.* 7: 629-635.
- Wakamiya, M., Lindsay, E.A., Rivera-Pérez, J.A., Baldini, A. and Behringer, R.R. 1998. Functional analysis of *Gscl* in the pathogenesis of the DiGeorge and velocardiofacial syndromes. *Hum. Mol. Genet.* 7: 1835-1840.
- Hoogendoorn, B., Coleman, S.L., Guy, C.A., Smith, S.K., O'Donovan, M.C. and Buckland, P.R. 2004. Functional analysis of polymorphisms in the promoter regions of genes on 22q11. *Hum. Mutat.* 24: 35-42.
- Wang, H., Duan, S., Du, J., Li, X., Xu, Y., Zhang, Z., Wang, Y., Huang, G., Feng, G. and He, L. 2006. Transmission disequilibrium test provides evidence of association between promoter polymorphisms in 22q11 gene DGCR14 and schizophrenia. *J. Neural Transm.* 113: 1551-1561.

CHROMOSOMAL LOCATION

Genetic locus: DGCR14 (human) mapping to 22q11.21.

SOURCE

DGCR14 (2264C3a) is a mouse monoclonal antibody raised against a recombinant protein corresponding to an internal region of DGCR14 of human origin.

RESEARCH USE

For research use only, not for use in diagnostic procedures.

PRODUCT

Each vial contains 100 µg IgG₁ in 1.0 ml of PBS with < 0.1% sodium azide and 1.0% stabilizer protein.

APPLICATIONS

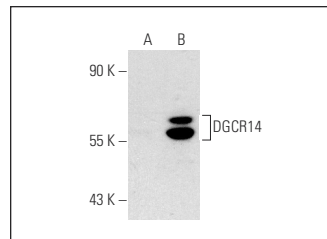
DGCR14 (2264C3a) is recommended for detection of DGCR14 of human origin by Western Blotting (starting dilution 1:200, dilution range 1:100-1:1000) and immunoprecipitation [1-2 µg per 100-500 µg of total protein (1 ml of cell lysate)].

Suitable for use as control antibody for DGCR14 siRNA (h): sc-77137, DGCR14 shRNA Plasmid (h): sc-77137-SH and DGCR14 shRNA (h) Lentiviral Particles: sc-77137-V.

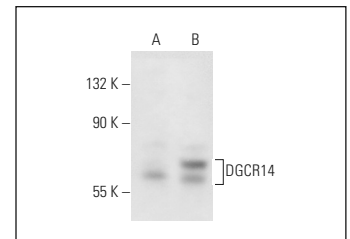
Molecular Weight of DGCR14: 53 kDa.

Positive Controls: DGCR14 (h3): 293T Lysate: sc-174407 or K-562 whole cell lysate: sc-2203.

DATA



DGCR14 (2264C3a): sc-81079. Western blot analysis of DGCR14 expression in non-transfected: sc-117752 (A) and human DGCR14 transfected: sc-174407 (B) 293T whole cell lysates.



DGCR14 (2264C3a): sc-81079. Western blot analysis of DGCR14 expression in non-transfected: sc-117752 (A) and human DGCR14 transfected: sc-128453 (B) 293T whole cell lysates.

STORAGE

Store at 4° C, ****DO NOT FREEZE****. Stable for one year from the date of shipment. Non-hazardous. No MSDS required.

PROTOCOLS

See our web site at www.scbt.com for detailed protocols and support products.