

EXOSC2 (2334C3a): sc-81085

BACKGROUND

The exosome is a multisubunit complex of 3' to 5' exoribonucleases. It is involved in a variety of cellular processes and is responsible for degrading unstable mRNAs that contain AU-rich elements in their untranslated 3' region. EXOSC2 (exosome component 2), also known as p7, RRP4 (ribosomal RNA-processing protein 4), hRrp4p or Rrp4p, is a component of the exosome multi-enzyme ribonuclease complex. It contains one S1 RNA-binding domain and localizes to the cytoplasm and nucleolus. In humans, EXOSC2 is phosphorylated within the S1 RNA-binding domain at serine residue 124. This phosphorylation site is conserved from yeast to human, implying that it is of great importance in the cell. EXOSC2 is one of the four exosome subunits known to have exoribonuclease activity. It is required for the processing of the 7S pre-RNA.

REFERENCES

- Mitchell, P., Petfalski, E. and Tollervey, D. 1996. The 3' end of yeast 5.8S rRNA is generated by an exonuclease processing mechanism. *Genes Dev.* 10: 502-513.
- Mitchell, P., Petfalski, E., Shevchenko, A., Mann, M. and Tollervey, D. 1997. The exosome: a conserved eukaryotic RNA processing complex containing multiple 3' → 5' exoribonucleases. *Cell* 91: 457-466.
- Chen, C.Y., Gherzi, R., Ong, S.E., Chan, E.L., Raijmakers, R., Pruijn, G.J., Stoecklin, G., Moroni, C., Mann, M. and Karin, M. 2001. AU binding proteins recruit the exosome to degrade ARE-containing mRNAs. *Cell* 107: 451-464.
- Online Mendelian Inheritance in Man, OMIM™. 2002. Johns Hopkins University, Baltimore, MD. MIM Number: 602238. World Wide Web URL: <http://www.ncbi.nlm.nih.gov/omim/>
- Evguenieva-Hackenberg, E., Walter, P., Hochleitner, E., Lottspeich, F. and Klug, G. 2003. An exosome-like complex in *Sulfolobus solfataricus*. *EMBO Rep.* 4: 889-893.
- Walter, P., Klein, F., Lorentzen, E., Ilchmann, A., Klug, G. and Evguenieva-Hackenberg, E. 2006. Characterization of native and reconstituted exosome complexes from the hyperthermophilic archaeon *Sulfolobus solfataricus*. *Mol. Microbiol.* 62: 1076-1089.
- Synowsky, S.A., van den Heuvel, R.H., Mohammed, S., Pijnappel, P.W. and Heck, A.J. 2006. Probing genuine strong interactions and posttranslational modifications in the heterogeneous yeast exosome protein complex. *Mol. Cell. Proteomics* 5: 1581-1592.

CHROMOSOMAL LOCATION

Genetic locus: EXOSC2 (human) mapping to 9q34.12.

SOURCE

EXOSC2 (2334C3a) is a mouse monoclonal antibody raised against a recombinant protein corresponding to an internal region of EXOSC2 of human origin.

PRODUCT

Each vial contains 100 µg IgG₁ in 1.0 ml of PBS with < 0.1% sodium azide and 1.0% stabilizer protein.

APPLICATIONS

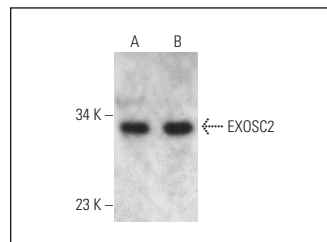
EXOSC2 (2334C3a) is recommended for detection of EXOSC2 of human origin by Western Blotting (starting dilution 1:200, dilution range 1:100-1:1000) and immunoprecipitation [1-2 µg per 100-500 µg of total protein (1 ml of cell lysate)].

Suitable for use as control antibody for EXOSC2 siRNA (h): sc-92604, EXOSC2 shRNA Plasmid (h): sc-92604-SH and EXOSC2 shRNA (h) Lentiviral Particles: sc-92604-V.

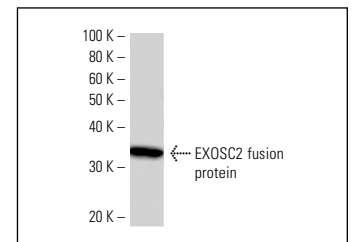
Molecular Weight of EXOSC2: 33 kDa.

Positive Controls: Jurkat nuclear extract: sc-2132 or Hep G2 nuclear extract: sc-364819.

DATA



EXOSC2 (2334C3a): sc-81085. Western blot analysis of EXOSC2 expression in Jurkat (A) and Hep G2 (B) nuclear extracts.



EXOSC2 (2334C3a): sc-81085 Western Blot analysis of human recombinant EXOSC2 fusion protein.

STORAGE

Store at 4° C, **DO NOT FREEZE**. Stable for one year from the date of shipment. Non-hazardous. No MSDS required.

RESEARCH USE

For research use only, not for use in diagnostic procedures.

PROTOCOLS

See our web site at www.scbt.com for detailed protocols and support products.