

# CRN (2212C1a): sc-81235

## BACKGROUND

CRN (crooked neck-like protein 1) is a widely-expressed protein encoded by the human gene CRNKL1. CRN belongs to the crooked-neck family, contains 17 HAT repeats and is involved in the pre-mRNA splicing process. CRN is essential for embryogenesis and has also been implicated in cell cycle progression. CRN co-localizes with protein splicing factors into distinct sub-nuclear domains associated with snRNP biogenesis. CRN binds to splicing complexes simultaneously with the addition of the U4/U6.U5 tri-snRNP particle (non-coding RNA component of the major U2-dependent spliceosome).

## REFERENCES

- Lai, C.H., Chiu, J.Y. and Lin, W. 2001. Identification of the human crooked neck gene by comparative gene identification. *Biochim. Biophys. Acta* 1517: 449-454.
- Raisin-Tani, S. and Léopold, P. 2002. *Drosophila* crooked-neck protein co-fractionates in a multiprotein complex with splicing factors. *Biochem. Biophys. Res. Commun.* 296: 288-292.
- Chung, S., Zhou, Z., Huddleston, K.A., Harrison, D.A., Reed, R., Coleman, T.A. and Rymond, B.C. 2002. Crooked neck is a component of the human spliceosome and implicated in the splicing process. *Biochim. Biophys. Acta* 1576: 287-297.
- Deloukas, P., Matthews, L.H., Ashurst, J., Burton, J., Gilbert, J.G., Jones, M., Stavrides, G., Almeida, J.P., Babbage, A.K., Bagguley, C.L., Bailey, J., et al. 2002. The DNA sequence and comparative analysis of human chromosome 20. *Nature* 414: 865-871.
- Jurica, M.S., Licklider, L.J., Gygi, S.R., Grigorieff, N. and Moore, M.J. 2002. Purification and characterization of native spliceosomes suitable for three-dimensional structural analysis. *RNA* 8: 426-439.
- Hillman, R.T., Green, R.E. and Brenner, S.E. 2004. An unappreciated role for RNA surveillance. *Genome Biol.* 5: R8.

## CHROMOSOMAL LOCATION

Genetic locus: CRNKL1 (human) mapping to 20p11.23; Crnk11 (mouse) mapping to 2 G1.

## SOURCE

CRN (2212C1a) is a mouse monoclonal antibody raised against a recombinant protein corresponding to the C-terminal region of CRN of human origin.

## PRODUCT

Each vial contains 100 µg in 1.0 ml of PBS with < 0.1% sodium azide and 1.0% stabilizer protein.

## RESEARCH USE

For research use only, not for use in diagnostic procedures.

## PROTOCOLS

See our web site at [www.scbt.com](http://www.scbt.com) for detailed protocols and support products.

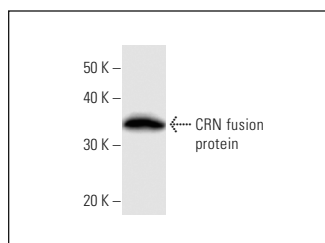
## APPLICATIONS

CRN (2212C1a) is recommended for detection of CRN of mouse, rat and human origin by Western Blotting (starting dilution 1:200, dilution range 1:100-1:1000) and immunoprecipitation [1-2 µg per 100-500 µg of total protein (1 ml of cell lysate)].

Suitable for use as control antibody for CRN siRNA (h): sc-77028, CRN siRNA (m): sc-77029, CRN shRNA Plasmid (h): sc-77028-SH, CRN shRNA Plasmid (m): sc-77029-SH, CRN shRNA (h) Lentiviral Particles: sc-77028-V and CRN shRNA (m) Lentiviral Particles: sc-77029-V.

Molecular Weight of CRN: 83 kDa.

## DATA



CRN (2212C1a): sc-81235. Western Blot analysis of human recombinant CRN fusion protein.

## STORAGE

For immediate and continuous use, store at 4° C for up to one month. For sporadic use, freeze in working aliquots in order to avoid repeated freeze/thaw cycles. If turbidity is evident upon prolonged storage, clarify solution by centrifugation.