

LSm10 (2522C1a): sc-81314

BACKGROUND

LSm10 (U7 snRNA-associated Sm-like protein LSm10) is a nuclear protein that belongs to the snRNP (small nuclear ribonucleoproteins) Sm protein family. The survival of motor neurons (SMN) complex mediates the assembly of snRNPs involved in splicing and histone RNA processing. A crucial step in this process is the binding of Sm proteins onto the SMN protein. LSm10 and LSm11, mammalian homologs of the yeast Sm proteins D1 and D2, are important for U7 snRNP function and subcellular localization. U7 snRNP is an RNA molecule involved in the splicing of animal histone pre-mRNAs. LSm10 and LSm11 also associate with pICln (Chloride ion current inducer protein), which interacts with Sm proteins to inhibit their assembly on U RNA. LSm10 interactions with U7 snRNA and pICln may provide the means for using modified U7 snRNA derivatives to alter specific pre-mRNA splicing events, potentially leading to advances in antisense gene therapy.

REFERENCES

- Pillai, R.S., et al. 2001. Purified U7 snRNPs lack the Sm proteins D1 and D2 but contain LSm10, a new 14 kDa Sm D1-like protein. *EMBO J.* 20: 5470-5479.
- Dominski, Z., et al. 2002. A novel zinc finger protein is associated with U7 snRNP and interacts with the stem-loop binding protein in the histone pre-mRNP to stimulate 3'-end processing. *Genes Dev.* 16: 58-71.
- Pillai, R.S., et al. 2003. Unique Sm core structure of U7 snRNPs: assembly by a specialized SMN complex and the role of a new component, LSm11, in histone RNA processing. *Genes Dev.* 17: 2321-2333.
- Schümperli, D. and Pillai, R.S. 2004. The special Sm core structure of the U7 snRNP: far-reaching significance of a small nuclear ribonucleoprotein. *Cell. Mol. Life Sci.* 61: 2560-2570.
- Lehner, B. and Sanderson, C.M. 2004. A protein interaction framework for human mRNA degradation. *Genome Res.* 14: 1315-1323.
- Rual, J.F., et al. 2005. Towards a proteome-scale map of the human protein-protein interaction network. *Nature* 437: 1173-1178.
- Azzouz, T.N., et al. 2005. Toward an assembly line for U7 snRNPs: interactions of U7-specific LSm proteins with PRMT5 and SMN complexes. *J. Biol. Chem.* 280: 34435-34440.
- Wagner, E.J. and Marzluff, W.F. 2006. ZFP100, a component of the active U7 snRNP limiting for histone pre-mRNA processing, is required for entry into S phase. *Mol. Cell. Biol.* 26: 6702-6712.

CHROMOSOMAL LOCATION

Genetic locus: LSM10 (human) mapping to 1p34.3.

SOURCE

LSm10 (2522C1a) is a mouse monoclonal antibody raised against a recombinant protein corresponding to a region near the N-terminus of LSm10 of human origin.

RESEARCH USE

For research use only, not for use in diagnostic procedures.

PRODUCT

Each vial contains 100 µg IgG_{2a} in 1.0 ml of PBS with < 0.1% sodium azide and 1.0% stabilizer protein.

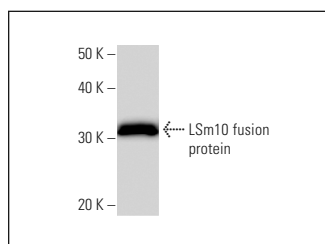
APPLICATIONS

LSm10 (2522C1a) is recommended for detection of LSm10 of human origin by Western Blotting (starting dilution 1:200, dilution range 1:100-1:1000) and immunoprecipitation [1-2 µg per 100-500 µg of total protein (1 ml of cell lysate)].

Suitable for use as control antibody for LSm10 siRNA (h): sc-75702, LSm10 shRNA Plasmid (h): sc-75702-SH and LSm10 shRNA (h) Lentiviral Particles: sc-75702-V.

Molecular Weight of LSm10: 14 kDa.

DATA



LSm10 (2522C1a): sc-81314. Western Blot analysis of human recombinant LSm10 fusion protein.

STORAGE

For immediate and continuous use, store at 4° C for up to one month. For sporadic use, freeze in working aliquots in order to avoid repeated freeze/thaw cycles. If turbidity is evident upon prolonged storage, clarify solution by centrifugation.

PROTOCOLS

See our web site at www.scbt.com for detailed protocols and support products.