

MTGR1 (CBF5I134): sc-81326

BACKGROUND

MTGR1 (CBFA2T2, ETO homologous on chromosome 20) is a 604 amino acid protein encoded by the human CBFA2T2 gene. MTGR1 belongs to the CBFA2T family and contains one MYND-type (myeloid translocation protein 8, Nery and DEAF-1) zinc finger and one TAFH (TBP-associated factor) domain. MTGR1 may function as a complex with the chimeric protein RUNX1/AML1-CBFA2T1/MTG8 which is produced in acute myeloid leukemia with the chromosomal translocation t(8;21). Through this complex MTGR1 may cause the repression of AML1-dependent transcription and the induction of G-CSF/CSF3-dependent cell growth. It is also believed to be a tumor suppressor gene candidate for myeloid tumors with the deletion of the 20q11 region. MTGR1 forms both a homo-oligomer and hetero-oligomer with MTG8 and is ubiquitously expressed in fetal and adult tissues. It is highly expressed in adult brain, heart, lung, kidney, lymph node, appendix, thymus, testis, uterus, small intestine, prostate and thymus. Deletion of the CBFA2T2 gene has been described in 10%, 5% and 3% of cases in polycythemia vera (PV), myelodysplastic syndromes (MDS) and acute myeloid leukemia (AML), respectively.

REFERENCES

1. Fracchiolla, N.S., Colombo, G., Finelli, P., Maiolo, A.T. and Neri, A. 1998. EHT, a new member of the MTG8/ETO gene family, maps on 20q11 region and is deleted in acute myeloid leukemias. *Blood* 92: 3481-3484.
2. Kitabayashi, I., Ida, K., Morohoshi, F., Yokoyama, A., Mitsuhashi, N., Shimizu, K., Nomura, N., Hayashi, Y. and Ohki, M. 1998. The AML1-MTG8 leukemic fusion protein forms a complex with a novel member of the MTG8(ETO/CDR) family, MTGR1. *Mol. Cell. Biol.* 18: 846-858.
3. Calabi, F. and Cilli, V. 1998. CBFA2T1, a gene rearranged in human leukemia, is a member of a multigene family. *Genomics* 52: 332-341.
4. Morohoshi, F., Mitani, S., Mitsuhashi, N., Kitabayashi, I., Takahashi, E., Suzuki, M., Munakata, N. and Ohki, M. 2000. Structure and expression pattern of a human MTG8/ETO family gene, MTGR1. *Gene* 241: 287-295.
5. Hoogeveen, A.T., Rossetti, S., Stoyanova, V., Schonkeren, J., Fenaroli, A., Schiaffonati, L., van Unen, L. and Sacchi, N. 2002. The transcriptional co-repressor MTG16a contains a novel nucleolar targeting sequence deranged in t(16;21)-positive myeloid malignancies. *Oncogene* 21: 6703-6712.
6. Koyano-Nakagawa, N. and Kintner, C. 2005. The expression and function of MTG/ETO family proteins during neurogenesis. *Dev. Biol.* 278: 22-34.
7. Amann, J.M., Chyla, B.J., Ellis, T.C., Martinez, A., Moore, A.C., Franklin, J.L., McGhee, L., Meyers, S., Ohm, J.E., Luce, K.S., Ouelette, A.J., Washington, M.K., Thompson, M.A., King, D., Gautam, S., Coffey, R.J., Whitehead, R.H. and Hiebert, S.W. 2005. MTGR1 is a transcriptional corepressor that is required for maintenance of the secretory cell lineage in the small intestine. *Mol. Cell. Biol.* 25: 9576-9585.
8. Martinez, J.A., Williams, C.S., Amann, J.M., Ellis, T.C., Moreno-Miralles, I., Washington, M.K., Gregoli, P. and Hiebert, S.W. 2006. Deletion of MTGR1 sensitizes the colonic epithelium to dextran sodium sulfate-induced colitis. *Gastroenterology* 131: 579-588.
9. LocusLink Report (LocusID: 9139). <http://www.ncbi.nlm.nih.gov/LocusLink/>

CHROMOSOMAL LOCATION

Genetic locus: CBFA2T2 (human) mapping to 20q11.

SOURCE

MTGR1 (CBF5I134) is a mouse monoclonal antibody raised against a recombinant protein corresponding to the C-terminal region of MTGR1 of human origin.

PRODUCT

Each vial contains 100 µg IgG₁ in 1.0 ml of PBS with < 0.1% sodium azide and 1.0% stabilizer protein.

APPLICATIONS

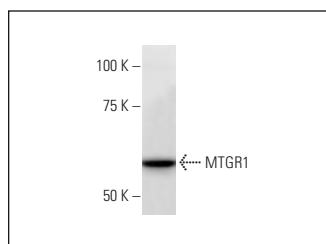
MTGR1 (CBF5I134) is recommended for detection of MTGR1 of human origin by Western Blotting (starting dilution 1:200, dilution range 1:100-1:1000) and immunoprecipitation [1-2 µg per 100-500 µg of total protein (1 ml of cell lysate)].

Suitable for use as control antibody for MTGR1 siRNA (h): sc-62645, MTGR1 shRNA Plasmid (h): sc-62645-SH and MTGR1 shRNA (h) Lentiviral Particles: sc-62645-V.

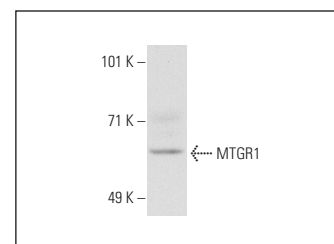
Molecular Weight of MTGR1: 67 kDa.

Positive Controls: HeLa whole cell lysate: sc-2200 or Jurkat nuclear extract: sc-2132.

DATA



MTGR1 (CBF5I134): sc-81326. Western Blot analysis of MTGR1 expression in HeLa whole cell lysate.



MTGR1 (CBF5I134): sc-81326. Western blot analysis of MTGR1 expression in Jurkat nuclear extract.

STORAGE

For immediate and continuous use, store at 4° C for up to one month. For sporadic use, freeze in working aliquots in order to avoid repeated freeze/thaw cycles. If turbidity is evident upon prolonged storage, clarify solution by centrifugation.

RESEARCH USE

For research use only, not for use in diagnostic procedures.

PROTOCOLS

See our web site at www.scbt.com for detailed protocols and support products.