

Sox-22 (86C2a): sc-81380

BACKGROUND

Sox genes comprise a family of genes that are related to the mammalian sex determining gene SRY. These genes similarly contain sequences that encode for the HMG-box domain, which is responsible for the sequence-specific DNA-binding activity. Sox genes encode putative transcriptional regulators implicated in the decision of cell fates during development and the control of diverse developmental processes. The highly complex group of Sox genes cluster at a minimum of 40 different loci that rapidly diverged in various animal lineages. At present 30 Sox genes have been identified, and members of this family have been shown to be conserved during evolution and to play key roles during animal development. Some are involved in human diseases, including sex reversal.

REFERENCES

1. Laudet, V., Stehelin, D. and Clevers, H. 1993. Ancestry and diversity of the HMG box superfamily. *Nucleic Acids Res.* 21: 2493-2501.
2. Kuhlbrodt, K., Herbarth, B., Sock, E., Hermans-Borgmeyer, I. and Wegner, M. 1998. Sox-10, a novel transcriptional modulator in glial cells. *J. Neurosci.* 18: 237-250.
3. Arsic, N., Rajic, T., Stanojic, S., Goodfellow, P.N. and Stevanovic, M. 1998. Characterisation and mapping of the human SOX14 gene. *Cytogenet. Cell Genet.* 83: 139-146.
4. Osaki, E., Nishina, Y., Inazawa, J., Copeland, N.G., Gilbert, D.J., Jenkins, N.A., Ohsugi, M., Tezuka, T., Yoshida, M. and Semba, K. 1999. Identification of a novel SRY-related gene and its germ cell-specific expression. *Nucleic Acids Res.* 27: 2503-2510.
5. Sasai, Y. 2001. Roles of Sox factors in neural determination: conserved signaling in evolution? *Int. J. Dev. Biol.* 45: 321-326.

CHROMOSOMAL LOCATION

Genetic locus: SOX12 (human) mapping to 20p13.

SOURCE

Sox-22 (86C2a) is a mouse monoclonal antibody raised against a recombinant protein corresponding to an internal region of Sox-22 of human origin.

PRODUCT

Each vial contains 100 µg IgG_{2a} in 1.0 ml of PBS with < 0.1% sodium azide and 1.0% stabilizer protein.

STORAGE

For immediate and continuous use, store at 4° C for up to one month. For sporadic use, freeze in working aliquots in order to avoid repeated freeze/thaw cycles. If turbidity is evident upon prolonged storage, clarify solution by centrifugation.

PROTOCOLS

See our web site at www.scbt.com for detailed protocols and support products.

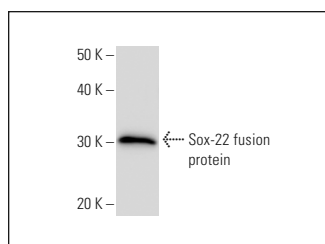
APPLICATIONS

Sox-22 (86C2a) is recommended for detection of Sox-22 of human origin by Western Blotting (starting dilution 1:200, dilution range 1:100-1:1000) and immunoprecipitation [1-2 µg per 100-500 µg of total protein (1 ml of cell lysate)].

Suitable for use as control antibody for Sox-22 siRNA (h): sc-38435, Sox-22 shRNA Plasmid (h): sc-38435-SH and Sox-22 shRNA (h) Lentiviral Particles: sc-38435-V.

Molecular Weight of Sox-22: 34 kDa.

DATA



Sox-22 (86C2a): sc-81380. Western Blot analysis of human recombinant Sox-22 fusion protein.

RESEARCH USE

For research use only, not for use in diagnostic procedures.