

SAS10 (2950C2a): sc-81639

BACKGROUND

SAS10 (something about silencing protein 10), also known as UTP3 or CRLZ1 (charged amino acid-rich leucine zipper 1), is a small subunit (SSU) processome component. The SSU processome is a complex involved in ribosome biogenesis and is required for pre-18S rRNA maturation. SAS10 localizes to the nucleus and also plays a role in forming the structure of silenced chromatin. SAS10 is the human homolog of the *S. cerevisiae* Sas10 protein. In *S. cerevisiae*, the overexpression of Sas10 disrupts gene silencing. This suggests another role of SAS10 in gene silencing. In addition, SAS10 is believed to be involved in the development of the brain. Upon DNA damage, SAS10 is phosphorylated by ATM or ATR.

REFERENCES

1. Kamakaka, R.T. and Rine, J. 1998. Sir- and silencer-independent disruption of silencing in *Saccharomyces* by SAS10p. *Genetics* 149: 903-914.
2. Sakuma, T., Li, Q.L., Jin, Y., Choi, L.B., Kim, E.G., Ito, K., Ito, Y., Nomura, S. and Bae, S.C. 2001. Cloning and expression pattern of a novel PEBP2 β -binding protein (charged amino acid rich leucine zipper-1[Cr1-1.] in the mouse. *Mech. Dev.* 104: 151-154.
3. Online Mendelian Inheritance in Man, OMIM[™]. 2002. Johns Hopkins University, Baltimore, MD. MIM Number: 611614. World Wide Web URL: <http://www.ncbi.nlm.nih.gov/omim/>
4. Bernstein, K.A., Gallagher, J.E., Mitchell, B.M., Granneman, S. and Baserga, S.J. 2004. The small-subunit processome is a ribosome assembly intermediate. *Eukaryotic Cell.* 3: 1619-1626.
5. Bleichert, F., Granneman, S., Osheim, Y.N., Beyer, A.L. and Baserga, S.J. 2006. The PINc domain protein Utp24, a putative nuclease, is required for the early cleavage steps in 18S rRNA maturation. *Proc. Natl. Acad. Sci. USA* 103: 9464-9469.
6. Lim, J.H., Cho, S.J., Park, S.K., Kim, J., Cho, D., Lee, W.J. and Kang, C.J. 2006. Stage-specific expression of two neighboring Cr1z1 and IgJ genes during B cell development is regulated by their chromatin accessibility and histone acetylation. *J. Immunol.* 177: 5420-5429.
7. Kim, J.Y., Park, S.K., Kim, H.G., Cho, S.J., Kim, J. and Kang, C.J. 2006. The HSS3/4 enhancer of Cr1z1-IgJ locus is another target of EBF in the pre-B cell stage of B cell development. *Immunol. Lett.* 107: 63-70.

CHROMOSOMAL LOCATION

Genetic locus: UTP3 (human) mapping to 4q13.3.

SOURCE

SAS10 (2950C2a) is a mouse monoclonal antibody raised against a recombinant protein corresponding to a region near the C-terminus of SAS10 of human origin.

PRODUCT

Each vial contains 100 μ g IgG₁ in 1.0 ml of PBS with < 0.1% sodium azide and 1.0% stabilizer protein.

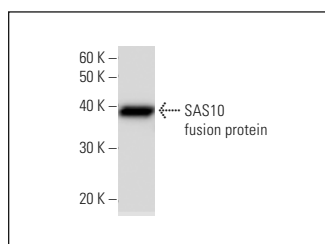
APPLICATIONS

SAS10 (2950C2a) is recommended for detection of SAS10 of human origin by Western Blotting (starting dilution 1:200, dilution range 1:100-1:1000) and immunoprecipitation [1-2 μ g per 100-500 μ g of total protein (1 ml of cell lysate)].

Suitable for use as control antibody for SAS10 siRNA (h): sc-89202, SAS10 shRNA Plasmid (h): sc-89202-SH and SAS10 shRNA (h) Lentiviral Particles: sc-89202-V.

Molecular Weight of SAS10: 55 kDa.

DATA



SAS10 (2950C2a): sc-81639. Western Blot analysis of human recombinant SAS10 fusion protein.

STORAGE

For immediate and continuous use, store at 4° C for up to one month. For sporadic use, freeze in working aliquots in order to avoid repeated freeze/thaw cycles. If turbidity is evident upon prolonged storage, clarify solution by centrifugation.

RESEARCH USE

For research use only, not for use in diagnostic procedures.

PROTOCOLS

See our web site at www.scbt.com for detailed protocols and support products.