

Blr1 (N-19): sc-8179

BACKGROUND

Burkitt's lymphoma receptor 1 (Blr1) is a lymphocyte specific chemokine receptor expressed at low levels in secondary lymphoid tissues and in defined structures of the cerebellum. The G protein-coupled receptor has significant homology to other chemokine receptors. Stimulation of Blr1 by its ligand, B-lymphocyte chemo-attractant (BLC) results in an influx of calcium into the cell and the chemotaxis of the cell. Blr1 is required for B-cell migration into splenic and Peyer's patch follicles. BLC expression in Peyer's patches is highest in germinal centers, where B cells undergo somatic mutation and affinity maturation.

REFERENCES

1. MacLennan, I.C. 1994. Germinal centers. *Annu. Rev. Immunol.* 12: 117-139.
2. Imal, Y. and Yamakawa, M. 1996. Morphology, function and pathology of follicular dendritic cells. *Pathol. Int.* 46: 807-833.
3. Forster, R., Mattis, A.E., Kremmer, E., Wolf, E., Brem, G. and Lipp, M. 1996. A putative chemokine receptor, BLR1, directs B cell migration to define lymphoid organs and specific anatomic compartments of the spleen. *Cell* 87: 1037-1047.
4. Flynn, S., Toellner, K.M., Raykundalia, C., Goodall, M. and Lane, P. 1998. CD4 T cell cytokine differentiation: the B cell activation molecule, OX40 ligand, instructs CD4 T cells to express interleukin 4 and upregulates expression of the chemokine receptor, Blr-1. *J. Exp. Med.* 188: 297-304.
5. Gunn, M.D., Ngo, V.N., Ansel, K.M., Ekland, E.H., Cyster, J.G. and Williams, L.T. 1998. A B-cell-homing chemokine made in lymphoid follicles activates Burkitt's lymphoma receptor-1. *Nature* 391: 799-803.
6. Battle, T.E., et al. 2000. Retinoic acid-induced blr1 expression promotes ERK2 activation and cell differentiation in HL-60 cells. *Exp. Cell Res.* 254: 287-298.
7. Battle, T.E., et al. 2001. Retinoic acid-induced blr1 expression requires RARalpha, RXR, and MAPK activation and uses ERK2 but not JNK/SAPK to accelerate cell differentiation. *Eur. J. Cell Biol.* 80: 59-67.
8. Wang, J., et al. 2004. A novel retinoic acid-responsive element regulates retinoic acid-induced BLR1 expression. *Mol. Cell. Biol.* 24: 2423-2443.

CHROMOSOMAL LOCATION

Genetic locus: CXCR5 (human) mapping to 11q23.3; Cxcr5 (mouse) mapping to 9 A5.2.

SOURCE

Blr1 (N-19) is an affinity purified goat polyclonal antibody raised against a peptide mapping at the N-terminus of Blr1 of human origin.

PRODUCT

Each vial contains 200 µg IgG in 1.0 ml of PBS with < 0.1% sodium azide and 0.1% gelatin.

Blocking peptide available for competition studies, sc-8179 P, (100 µg peptide in 0.5 ml PBS containing < 0.1% sodium azide and 0.2% BSA).

APPLICATIONS

Blr1 (N-19) is recommended for detection of Blr1 (Burkitt's lymphoma receptor 1) of mouse, rat and human origin by Western Blotting (starting dilution 1:200, dilution range 1:100-1:1000).

Suitable for use as control antibody for Blr1 siRNA (h): sc-29812, Blr1 siRNA (m): sc-29813, Blr1 shRNA Plasmid (h): sc-29812-SH, Blr1 shRNA Plasmid (m): sc-29813-SH, Blr1 shRNA (h) Lentiviral Particles: sc-29812-V and Blr1 shRNA (m) Lentiviral Particles: sc-29813-V.

Molecular Weight (predicted) of Blr1 long isoform: 42 kDa.

Molecular Weight (predicted) of Blr1 short isoform: 37 kDa.

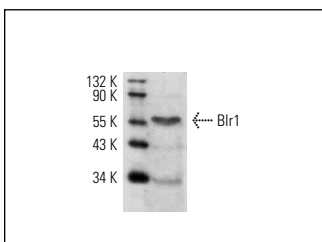
Molecular Weight (observed) of Blr1 long isoform: 56 kDa.

Positive Control: WEHI-231 whole cell lysate: sc-2213 or NAMALWA cell lysate: sc-2234.

RECOMMENDED SECONDARY REAGENTS

To ensure optimal results, the following support (secondary) reagents are recommended: 1) Western Blotting: use donkey anti-goat IgG-HRP: sc-2020 (dilution range: 1:2000-1:100,000) or Cruz Marker™ compatible donkey anti-goat IgG-HRP: sc-2033 (dilution range: 1:2000-1:5000), Cruz Marker™ Molecular Weight Standards: sc-2035, TBS Blotto A Blocking Reagent: sc-2333 and Western Blotting Luminol Reagent: sc-2048.

DATA



Blr1 (N-19): sc-8179. Western blot analysis of Blr1 expression in WEHI-231 whole cell lysate.

STORAGE

Store at 4° C, **DO NOT FREEZE**. Stable for one year from the date of shipment. Non-hazardous. No MSDS required.

RESEARCH USE

For research use only, not for use in diagnostic procedures.

MONOS
Satisfaction
Guaranteed

Try **Blr1 (C-3): sc-373775**, our highly recommended monoclonal alternative to Blr1 (N-19).