

PCDHA6 (S-13): sc-81799

BACKGROUND

Members of the cadherin-related neuronal receptor (CNR) family, including PCDHA4 (also known as CNR1) and PCDHA6 (also known as CNR2), comprise a novel subfamily within the cadherin superfamily of adhesion molecules. The cadherin-related neuronal receptor proteins form a complex with Fyn, a protein tyrosine kinase that is involved in building brain networks and determining patterns of behavior. Cadherin-related neuronal receptor 1 and 2 were discovered during a search for receptor molecules to the Fyn signaling pathway in the mammalian brain. Members of the cadherin superfamily are Ca²⁺-dependent adhesion molecules that function to mediate cell-cell binding critical to the maintenance of tissue structure and morphogenesis. The PCDHA4 and PCDHA6 extracellular domains contain six cadherin repeats that mediate Ca²⁺-dependent cell adhesion, while the cytoplasmic domains are not homologous with other cadherins.

REFERENCES

- Koch, P.J. and Franke, W.W. 1994. Desmosomal cadherins: another growing multigene family of adhesion molecules. *Curr. Opin. Cell Biol.* 6: 682-687.
- Ranscht, B. 1994. Cadherins and catenins: interactions and functions in embryonic development. *Curr. Opin. Cell Biol.* 6: 740-746.
- Ayalon, O., Sabanai, H., Lampugnani, M.G., Dejana, E. and Geiger, B. 1994. Spatial and temporal relationships between cadherins and PECAM-1 in cell-cell junctions of human endothelial cells. *J. Cell Biol.* 126: 247-258.
- Takeichi, M. 1995. Morphogenetic roles of classic cadherins. *Curr. Opin. Cell Biol.* 7: 619-627.
- Kai, N., Mishina, M. and Yagi, T. 1997. Molecular cloning of Fyn-associated molecules in the mouse central nervous system. *J. Neurosci. Res.* 48: 407-424.
- Kohmura, N., Senzaki, K., Hamada, S., Kai, N., Yasuda, R., Watanabe, M., Ishii, H., Yasuda, M., Mishina, M. and Yagi, T. 1998. Diversity revealed by a novel family of cadherins expressed in neurons at a synaptic complex. *Neuron* 20: 1137-1151.
- Resh, M.D. 1998. Fyn, a Src family tyrosine kinase. *Int. J. Biochem. Cell Biol.* 30: 1159-1162.

CHROMOSOMAL LOCATION

Genetic locus: PCDHA6 (human) mapping to 5q31.3.

SOURCE

PCDHA6 (S-13) is a mouse monoclonal antibody raised against recombinant PCDHA6 of human origin.

PRODUCT

Each vial contains 50 µg IgG_{2a} kappa light chain in 0.5 ml of PBS with < 0.1% sodium azide and 0.1% gelatin.

STORAGE

Store at 4° C, ****DO NOT FREEZE****. Stable for one year from the date of shipment. Non-hazardous. No MSDS required.

APPLICATIONS

PCDHA6 (S-13) is recommended for detection of PCDHA6 of human origin by Western Blotting (starting dilution 1:200, dilution range 1:100-1:1000), immunoprecipitation [1-2 µg per 100-500 µg of total protein (1 ml of cell lysate)] and solid phase ELISA (starting dilution 1:30, dilution range 1:30-1:3000).

Suitable for use as control antibody for PCDHA6 siRNA (h): sc-106379, PCDHA6 shRNA Plasmid (h): sc-106379-SH and PCDHA6 shRNA (h) Lentiviral Particles: sc-106379-V.

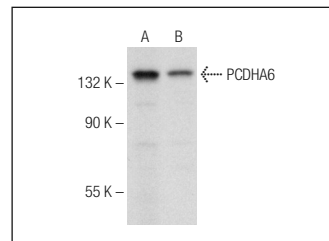
Molecular Weight of PCDHA6: 103 kDa.

Positive Controls: K-562 whole cell lysate: sc-2203 or Caco-2 cell lysate: sc-2262.

RECOMMENDED SUPPORT REAGENTS

To ensure optimal results, the following support reagents are recommended: 1) Western Blotting: use m-IgGκ BP-HRP: sc-516102 or m-IgGκ BP-HRP (Cruz Marker): sc-516102-CM (dilution range: 1:1000-1:10000), Cruz Marker™ Molecular Weight Standards: sc-2035, TBS Blotto A Blocking Reagent: sc-2333 and Western Blotting Luminol Reagent: sc-2048. 2) Immunoprecipitation: use Protein A/G PLUS-Agarose: sc-2003 (0.5 ml agarose/2.0 ml).

DATA



PCDHA6 (S-13): sc-81799. Western blot analysis of PCDHA6 expression in K-562 (A) and Caco-2 (B) whole cell lysates.

RESEARCH USE

For research use only, not for use in diagnostic procedures.

PROTOCOLS

See our web site at www.scbt.com for detailed protocols and support products.