

Laminin β -3 (YY-07): sc-81809

BACKGROUND

The Laminins comprise a growing family of disulfide-linked heterotrimers consisting of three genetically distinct polypeptide chains, designated α , β and γ . A major component of the basal lamina, laminins play a crucial role in providing a scaffolding upon which tissues are assembled and which serves as a physical barrier separating specialized tissues. During embryogenesis and early development, cells migrate along basement membranes, which are required for the polarization of cells. At least eight Laminin isoforms have been described: α -1, α -2, α -3, β -1, β -2, β -3, γ -1 and γ -2. Each isoform differs in the relative affinity with which it associates with individual Laminin receptors.

REFERENCES

1. Timpl, R. and Brown, J.C. 1994. The laminins. *Matrix Biol.* 14: 275-281.
2. Yurchenco, P.D. and O'Rear, J.J. 1994. Basal lamina assembly. *Curr. Opin. Cell Biol.* 6: 674-681.
3. Engvall, E. 1995. Structure and function of basement membranes. *Int. J. Dev. Biol.* 39: 781-787.
4. Farwell, A.P., Tranter, M.P. and Leonard, J.L. 1995. Thyroxine-dependent regulation of integrin-Laminin interactions in astrocytes. *Endocrinol.* 136: 3909-3915.
5. Aumailley, M. and Krieg, T. 1996. Laminins: a family of diverse multi-functional molecules of basement membranes. *J. Invest. Dermatol.* 106: 209-214.
6. Nomizu, M., Utani, A., Beck, K., Otaka, A., Roller, P.P. and Yamada, Y. 1996. Mechanism of Laminin chain assembly into a triple-stranded coiled-coil structure. *Biochemistry* 35: 2885-2893.
7. Ziober, B.L., Lin, C.S. and Kramer, R.H. 1996. Laminin-binding integrins in tumor progression and metastasis. *Sem. Cancer Biol.* 7: 119-128.
8. Ancsin, J.B. and Kisilevsky, R. 1996. Laminin interactions important for basement membrane assembly are promoted by zinc and implicate Laminin zinc finger-like sequences. *J. Biol. Chem.* 271: 6845-6851.
9. Carloni, V., Romanelli, R.G., Pinzani, M., Laffi, G. and Gentilini P. 1996. Expression and function of integrin receptors for collagen and Laminin in cultured human hepatic stellate cells. *Gastroenterology* 110: 1127-1136.

CHROMOSOMAL LOCATION

Genetic locus: LAMB3 (human) mapping to 1q32.

SOURCE

Laminin β -3 (YY-07) is a mouse monoclonal antibody raised against recombinant Laminin β -3 of human origin.

PRODUCT

Each vial contains 100 μ g IgG₁ in 1.0 ml PBS with < 0.1% sodium azide and 0.1% gelatin.

APPLICATIONS

Laminin β -3 (YY-07) is recommended for detection of Laminin β -3 of human origin by Western Blotting (starting dilution 1:200, dilution range 1:100-1:1000), immunoprecipitation [1-2 μ g per 100-500 μ g of total protein (1 ml of cell lysate)], immunofluorescence (starting dilution 1:50, dilution range 1:50-1:500) and solid phase ELISA (starting dilution 1:30, dilution range 1:30-1:3000).

Suitable for use as control antibody for Laminin β -3 siRNA (h): sc-43151, Laminin β -3 shRNA Plasmid (h): sc-43151-SH and Laminin β -3 shRNA (h) Lentiviral Particles: sc-43151-V.

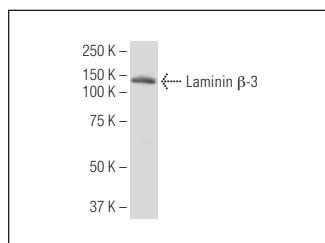
Molecular Weight of Laminin β -3: 140 kDa.

Positive Controls: HeLa whole cell lysate: sc-2200, A-431 whole cell lysate: sc-2201 or SCC-4 whole cell lysate.

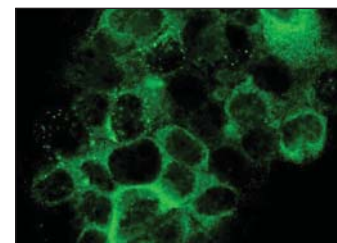
RECOMMENDED SECONDARY REAGENTS

To ensure optimal results, the following support (secondary) reagents are recommended: 1) Western Blotting: use goat anti-mouse IgG-HRP: sc-2005 (dilution range: 1:2000-1:32,000) or Cruz Marker™ compatible goat anti-mouse IgG-HRP: sc-2031 (dilution range: 1:2000-1:5000), Cruz Marker™ Molecular Weight Standards: sc-2035, TBS Blotto A Blocking Reagent: sc-2333 and Western Blotting Luminol Reagent: sc-2048. 2) Immunoprecipitation: use Protein A/G PLUS-Agarose: sc-2003 (0.5 ml agarose/2.0 ml). 3) Immunofluorescence: use goat anti-mouse IgG-FITC: sc-2010 (dilution range: 1:100-1:400) or goat anti-mouse IgG-TR: sc-2781 (dilution range: 1:100-1:400) with UltraCruz™ Mounting Medium: sc-24941.

DATA



Laminin β -3 (YY-07): sc-81809. Western blot analysis of Laminin β -3 expression in A-431 whole cell lysate



Laminin β -3 (YY-07): sc-81809. Immunofluorescence staining of paraformaldehyde-fixed A-431 cells showing cytoplasmic localization.

STORAGE

Store at 4° C, **DO NOT FREEZE**. Stable for one year from the date of shipment. Non-hazardous. No MSDS required.

RESEARCH USE

For research use only, not for use in diagnostic procedures.

PROTOCOLS

See our web site at www.scbt.com or our catalog for detailed protocols and support products.