

# BOLA1 (32.2): sc-81824

## BACKGROUND

BOLA1 (Bola-like protein 1), also known as CGI-143, is a member of the Bola/yrbA family of proteins. Members of this family are homologs of the *Escherichia coli* protein, Bola. Bola-like proteins are evolutionarily conserved from prokaryotes to eukaryotes and are believed to play a role in cell-cycle regulation or cell proliferation possibly via some sort of transcription regulation of other genes. In addition, Bola-like proteins may contain nucleic-acid binding properties, as is suggested by a fold structure that is similar to the KH-fold, a motif known to participate in nucleic-acid binding. Characteristic of Bola-like proteins which typically consist of approximately 100 amino acids, BOLA1 is a 137 amino acid protein.

## REFERENCES

- Lai, C.H., Chou, C.Y., Ch'ang, L.Y., Liu, C.S. and Lin, W. 2000. Identification of novel human genes evolutionarily conserved in *Caenorhabditis elegans* by comparative proteomics. *Genome Res.* 10: 703-713.
- Serapion, J., Kucuktas, H., Feng, J. and Liu, Z. 2004. Bioinformatic mining of type I microsatellites from expressed sequence tags of channel catfish (*Ictalurus punctatus*). *Mar. Biotechnol.* 6: 364-377.
- Kasai, T., Inoue, M., Koshiba, S., Yabuki, T., Aoki, M., Nunokawa, E., Seki, E., Matsuda, T., Matsuda, N., Tomo, Y., Shirouzu, M., Terada, T., Obayashi, N., Hamana, H., Shinya, N., Tatsuguchi, A., Yasuda, S., Yoshida, M., Hirota, H., Matsuo, Y., Tani, K., Suzuki, H., et al. 2004. Solution structure of a Bola-like protein from *Mus musculus*. *Protein Sci.* 13: 545-548.
- Beausoleil, S.A., Villén, J., Gerber, S.A., Rush, J. and Gygi, S.P. 2006. A probability-based approach for high-throughput protein phosphorylation analysis and site localization. *Nat. Biotechnol.* 24: 1285-1292.

## CHROMOSOMAL LOCATION

Genetic locus: BOLA1 (human) mapping to 1q21.2; Bola1 (mouse) mapping to 3 F2.1.

## SOURCE

BOLA1 (32.2) is a mouse monoclonal antibody raised against recombinant BOLA1 of human origin.

## PRODUCT

Each vial contains 100 µg IgG<sub>1</sub> in 1.0 ml PBS with < 0.1% sodium azide and 0.1% gelatin.

## STORAGE

Store at 4° C, \*\*DO NOT FREEZE\*\*. Stable for one year from the date of shipment. Non-hazardous. No MSDS required.

## PROTOCOLS

See our web site at [www.scbt.com](http://www.scbt.com) for detailed protocols and support products.

## APPLICATIONS

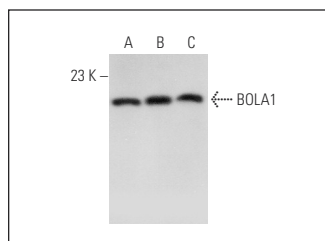
BOLA1 (32.2) is recommended for detection of BOLA1 of mouse, rat and human origin by Western Blotting (starting dilution 1:200, dilution range 1:100-1:1000), immunoprecipitation [1-2 µg per 100-500 µg of total protein (1 ml of cell lysate)], immunofluorescence (starting dilution 1:50, dilution range 1:50-1:500) and solid phase ELISA (starting dilution 1:30, dilution range 1:30-1:3000).

Suitable for use as control antibody for BOLA1 siRNA (h): sc-88760, BOLA1 siRNA (m): sc-141723, BOLA1 shRNA Plasmid (h): sc-88760-SH, BOLA1 shRNA Plasmid (m): sc-141723-SH, BOLA1 shRNA (h) Lentiviral Particles: sc-88760-V and BOLA1 shRNA (m) Lentiviral Particles: sc-141723-V.

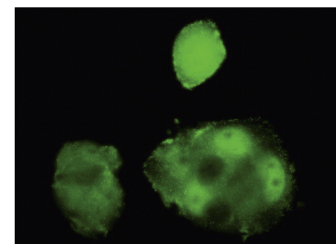
Molecular Weight of BOLA1: 14 kDa.

Positive Controls: NIH/3T3 whole cell lysate: sc-2210, K-562 whole cell lysate: sc-2203 or Jurkat whole cell lysate: sc-2204.

## DATA



BOLA1 (32.2): sc-81824. Western blot analysis of BOLA1 expression in Jurkat (A), K-562 (B) and NIH/3T3 (C) whole cell lysates.



BOLA1 (32.2): sc-81824. Immunofluorescence staining of paraformaldehyde-fixed MCF7 cells showing nuclear and cytoplasmic localization.

## RESEARCH USE

For research use only, not for use in diagnostic procedures.