

CLLD6 (Z15): sc-81861

BACKGROUND

Comprising nearly 4% of human DNA, chromosome 13 contains around 114 million base pairs and 400 genes. Key tumor suppressor genes on chromosome 13 include the breast cancer susceptibility gene, BRCA2, and the RB1 (retinoblastoma) gene. RB1 encodes a crucial tumor suppressor protein which, when defective, leads to malignant growth in the retina and has been implicated in a variety of other cancers. The gene SLITRK1, which is associated with Tourette syndrome, is on chromosome 13. As with most chromosomes, polysomy of part or all of chromosome 13 is deleterious to development and decreases the odds of survival. Trisomy 13, also known as Patau syndrome, is quite deadly and the few who survive past one year suffer from permanent neurologic defects, difficulty eating and vulnerability to serious respiratory infections.

REFERENCES

- Dunham, A., Matthews, L.H., Burton, J., Ashurst, J.L., Howe, K.L., Ashcroft, K.J., Beare, D.M., Burford, D.C., Hunt, S.E., Griffiths-Jones, S., Jones, M.C., Keenan, S.J., Oliver, K., et al. 2004. The DNA sequence and analysis of human chromosome 13. *Nature* 428: 522-528.
- Deng, H., Le, W.D., Xie, W.J. and Jankovic, J. 2006. Examination of the SLITRK1 gene in caucasian patients with Tourette syndrome. *Acta Neurol. Scand.* 114: 400-402.
- Giacinti, C. and Giordano, A. 2006. RB and cell cycle progression. *Oncogene* 25: 5220-5227.
- Grados, M.A. and Walkup, J.T. 2006. A new gene for Tourette's syndrome: a window into causal mechanisms? *Trends Genet.* 22: 291-293.
- Bugge, M., Collins, A., Hertz, J.M., Eiberg, H., Lundsteen, C., Brandt, C.A., Bak, M., Hansen, C., Delozier, C.D., Lespinasse, J., Tranebjaerg, L., Hahnemann, J.M., Rasmussen, K., Bruun-Petersen, G., Duprez, L., et al. 2007. Non-disjunction of chromosome 13. *Hum. Mol. Genet.* 16: 2004-2010.
- Hall, H.E., Chan, E.R., Collins, A., Judis, L., Shirley, S., Surti, U., Hoffner, L., Cockwell, A.E., Jacobs, P.A. and Hassold, T.J. 2007. The origin of trisomy 13. *Am. J. Med. Genet. A* 143: 2242-2248.
- Hassler, M., Singh, S., Yue, W.W., Luczynski, M., Lakbir, R., Sanchez-Sanchez, F., Bader, T., Pearl, L.H. and Mitnacht, S. 2007. Crystal structure of the retinoblastoma protein N domain provides insight into tumor suppression, ligand interaction and holoprotein architecture. *Mol. Cell* 28: 371-385.
- Hsu, H.F. and Hou, J.W. 2007. Variable expressivity in Patau syndrome is not all related to trisomy 13 mosaicism. *Am. J. Med. Genet. A* 143: 1739-1748.
- Thorslund, T. and West, S.C. 2007. BRCA2: a universal recombinase regulator. *Oncogene* 26: 7720-7730.

CHROMOSOMAL LOCATION

Genetic locus: C13orf1 (human) mapping to 13q14.3; 6330409N04Rik (mouse) mapping to 14 D1.

SOURCE

CLLD6 (Z15) is a mouse monoclonal antibody raised against recombinant CLLD6 of human origin.

PRODUCT

Each vial contains 50 µg IgG₁ kappa light chain in 0.5 ml of PBS with < 0.1% sodium azide and 0.1% gelatin.

APPLICATIONS

CLLD6 (Z15) is recommended for detection of CLLD6 of mouse, rat and human origin by Western Blotting (starting dilution 1:200, dilution range 1:100-1:1000), immunoprecipitation [1-2 µg per 100-500 µg of total protein (1 ml of cell lysate)] and solid phase ELISA (starting dilution 1:30, dilution range 1:30-1:3000).

Suitable for use as control antibody for CLLD6 siRNA (h): sc-105215, CLLD6 siRNA (m): sc-142395, CLLD6 shRNA Plasmid (h): sc-105215-SH, CLLD6 shRNA Plasmid (m): sc-142395-SH, CLLD6 shRNA (h) Lentiviral Particles: sc-105215-V and CLLD6 shRNA (m) Lentiviral Particles: sc-142395-V.

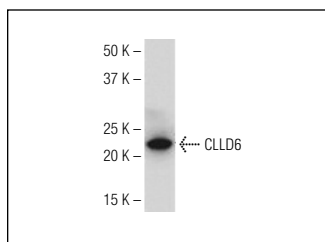
Molecular Weight of CLLD6: 22 kDa.

Positive Controls: PC-12 cell lysate: sc-2250.

RECOMMENDED SUPPORT REAGENTS

To ensure optimal results, the following support reagents are recommended: 1) Western Blotting: use m-IgGκ BP-HRP: sc-516102 or m-IgGκ BP-HRP (Cruz Marker): sc-516102-CM (dilution range: 1:1000-1:10000), Cruz Marker™ Molecular Weight Standards: sc-2035, TBS Blotto A Blocking Reagent: sc-2333 and Western Blotting Luminol Reagent: sc-2048. 2) Immunoprecipitation: use Protein A/G PLUS-Agarose: sc-2003 (0.5 ml agarose/2.0 ml).

DATA



CLLD6 (Z15): sc-81861. Western blot analysis of CLLD6 expression in PC-12 whole cell lysate.

STORAGE

Store at 4° C, ****DO NOT FREEZE****. Stable for one year from the date of shipment. Non-hazardous. No MSDS required.

RESEARCH USE

For research use only, not for use in diagnostic procedures.

PROTOCOLS

See our web site at www.scbt.com for detailed protocols and support products.