

FAM200A (Z-9): sc-81867

BACKGROUND

Chromosome 7 is about 158 million bases long, encodes over 1,000 genes and makes up about 5% of the human genome. Chromosome 7 has been linked to osteogenesis imperfecta, Pendred syndrome, lissencephaly, citrullinemia and Shwachman-Diamond syndrome. The deletion of a portion of the q arm of chromosome 7 is associated with Williams-Beuren syndrome, a condition characterized by mild mental retardation, an unusual comfort and friendliness with strangers and an elfin appearance. Deletions of portions of the q arm of chromosome 7 are also seen in a number of myeloid disorders including cases of acute myelogenous leukemia and myelodysplasia.

REFERENCES

1. Tsipouras, P., et al. 1983. Restriction fragment length polymorphism associated with the *pro α 2(I)* gene of human type I procollagen. Application to a family with an autosomal dominant form of osteogenesis imperfecta. *J. Clin. Invest.* 72: 1262-1267.
2. Liang, H., et al. 1998. Molecular anatomy of chromosome 7q deletions in myeloid neoplasms: evidence for multiple critical loci. *Proc. Natl. Acad. Sci. USA* 95: 3781-3785.
3. Hillier, L.W., et al. 2003. The DNA sequence of human chromosome 7. *Nature* 424: 157-164.
4. Eckert, M.A., et al. 2006. The neurobiology of Williams syndrome: cascading influences of visual system impairment? *Cell. Mol. Life Sci.* 63: 1867-1875.
5. Osborne, L.R., et al. 2006. Williams-Beuren syndrome diagnosis using fluorescence *in situ* hybridization. *Methods Mol. Med.* 126: 113-128.
6. Reiner, O., et al. 2006. Lissencephaly 1 linking to multiple diseases: mental retardation, neurodegeneration, schizophrenia, male sterility, and more. *Neuromolecular Med.* 8: 547-565.
7. Shimamura, A. 2006. Shwachman-Diamond syndrome. *Semin. Hematol.* 43: 178-188.
8. Brezinová, J., et al. 2007. Structural aberrations of chromosome 7 revealed by a combination of molecular cytogenetic techniques in myeloid malignancies. *Cancer Genet. Cytogenet.* 173: 10-16.
9. Leone, G., et al. 2007. Therapy-related leukemia and myelodysplasia: susceptibility and incidence. *Haematologica* 92: 1389-1398.

CHROMOSOMAL LOCATION

Genetic locus: FAM200A (human) mapping to 7q22.1.

SOURCE

FAM200A (Z-9) is a mouse monoclonal antibody raised against recombinant FAM200A of human origin.

PRODUCT

Each vial contains 200 μ l ascites containing IgM with < 0.1% sodium azide.

RESEARCH USE

For research use only, not for use in diagnostic procedures.

APPLICATIONS

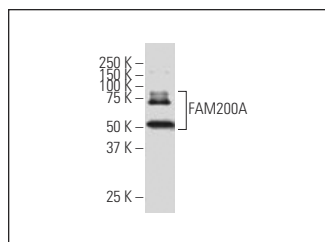
FAM200A (Z-9) is recommended for detection of FAM200A of human origin by Western Blotting (starting dilution to be determined by researcher, dilution range 1:100-1:5000), immunoprecipitation [1-2 μ l per 100-500 μ g of total protein (1 ml of cell lysate)] and solid phase ELISA (starting dilution to be determined by researcher, dilution range 1:100-1:5000).

Suitable for use as control antibody for FAM200A siRNA (h): sc-89778, FAM200A shRNA Plasmid (h): sc-89778-SH and FAM200A shRNA (h) Lentiviral Particles: sc-89778-V.

Molecular Weight of FAM200A: 75 kDa.

Positive Controls: MCF7 whole cell lysate: sc-2206.

DATA



FAM200A (Z-9): sc-81867. Western blot analysis of FAM200A expression in MCF7 whole cell lysate.

STORAGE

For immediate and continuous use, store at 4° C for up to one month. For sporadic use, freeze in working aliquots in order to avoid repeated freeze/thaw cycles. If turbidity is evident upon prolonged storage, clarify solution by centrifugation.

PROTOCOLS

See our web site at www.scbt.com for detailed protocols and support products.