

# PTF1 (43B-9): sc-81972

## BACKGROUND

PTF1, also known as PTF1A (pancreas specific transcription factor, 1A) or PTF1-p48, is a pancreas-specific protein that functions as a component of the trimeric pancreas transcription factor 1 (PTF1) complex. Localizing to the nucleus, PTF1 contains one basic helix-loop-helix (bHLH) domain and is believed to play an important role in mammalian pancreatic development, functioning as a transcription factor that regulates the specification of all three pancreatic cell types. PTF1 interacts with RBP-J $\kappa$  and, together, they cooperate in regulating the expression of PDX-1 (pancreas/duodenum homeobox protein 1), a key regulator of pancreatic islet development and Insulin gene transcription in  $\beta$  cells. Loss of functional PTF1 can cause pancreatic progenitors to take on the normal fates of duodenal epithelia. Mutations in the gene encoding PTF1 lead to diabetes mellitus and cerebellar hypoplasia/agenesis, suggesting that PTF1 also plays an important role in cerebellar neurogenesis.

## REFERENCES

- Krapp, A., et al. 1998. The bHLH protein PTF1-p48 is essential for the formation of the exocrine and the correct spatial organization of the endocrine pancreas. *Genes Dev.* 12: 3752-3763.
- Kawaguchi, Y., et al. 2002. The role of the transcriptional regulator PTF1A in converting intestinal to pancreatic progenitors. *Nat. Genet.* 32: 128-134.
- Online Mendelian Inheritance in Man, OMIM™. 2002. Johns Hopkins University, Baltimore, MD. MIM Number: 607194. World Wide Web URL: <http://www.ncbi.nlm.nih.gov/omim/>
- Miyatsuka, T., et al. 2007. PTF1A and RBP-J cooperate in activating Pdx1 gene expression through binding to Area III. *Biochem. Biophys. Res. Commun.* 362: 905-909.
- Masui, T., et al. 2007. Early pancreatic development requires the vertebrate Suppressor of Hairless (RBPJ) in the PTF1 bHLH complex. *Genes Dev.* 21: 2629-2643.
- Yamada, M., et al. 2007. Origin of climbing fiber neurons and their developmental dependence on PTF1A. *J. Neurosci.* 27: 10924-10934.
- Burlison, J.S., et al. 2008. PDX-1 and PTF1A concurrently determine fate specification of pancreatic multipotent progenitor cells. *Dev. Biol.* 316: 74-86.
- Boije, H., et al. 2008. Temporal and spatial expression of transcription factors FOXN4, PTF1A, PROX1, Isl1 and Lim1 mRNA in the developing chick retina. *Gene Expr. Patterns* 8: 117-123.
- Hald, J., et al. 2008. Generation and characterization of PTF1A antiserum and localization of PTF1A in relation to Nkx-6.1 and PDX-1 during the earliest stages of mouse pancreas development. *J. Histochem. Cytochem.* 56: 587-595.

## CHROMOSOMAL LOCATION

Genetic locus: PTF1A (human) mapping to 10p12.2; Ptf1a (mouse) mapping to 2 A3.

## SOURCE

PTF1 (43B-9) is a mouse monoclonal antibody raised against recombinant PTF1 of human origin.

## PRODUCT

Each vial contains 100  $\mu$ g IgG<sub>2a</sub> in 1.0 ml of PBS with < 0.1% sodium azide and 0.1% gelatin.

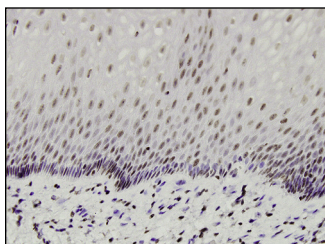
## APPLICATIONS

PTF1 (43B-9) is recommended for detection of PTF1 of mouse, rat and human origin by immunofluorescence (starting dilution 1:50, dilution range 1:50-1:500), immunohistochemistry (including paraffin-embedded sections) (starting dilution 1:50, dilution range 1:50-1:500) and solid phase ELISA (starting dilution 1:30, dilution range 1:30-1:3000).

Suitable for use as control antibody for PTF1 siRNA (h): sc-76285, PTF1 siRNA (m): sc-76286, PTF1 shRNA Plasmid (h): sc-76285-SH, PTF1 shRNA Plasmid (m): sc-76286-SH, PTF1 shRNA (h) Lentiviral Particles: sc-76285-V and PTF1 shRNA (m) Lentiviral Particles: sc-76286-V.

Molecular Weight of PTF1: 42 kDa.

## DATA



PTF1 (43B-9): sc-81972. Immunoperoxidase staining of formalin-fixed, paraffin-embedded human esophagus tissue showing nuclear localization.

## STORAGE

Store at 4° C, **\*\*DO NOT FREEZE\*\***. Stable for one year from the date of shipment. Non-hazardous. No MSDS required.

## RESEARCH USE

For research use only, not for use in diagnostic procedures.

## PROTOCOLS

See our web site at [www.scbt.com](http://www.scbt.com) for detailed protocols and support products.