

RAI16 (C-20): sc-82334

BACKGROUND

RAI16 (FAM160B2), also known as family with sequence similarity 160, member B2, FLJ11125, FLJ21801, MGC138352 or retinoic acid induced 16, is a 743 amino acid protein belonging to the UPF0518 family. Encoded by a gene that maps to human chromosome 8p21.3, RAI16 shares homology with mouse and rat orthologue. RAI16 may play a role in early lens development in mammals and in upregulation of genes in CD34⁺ cells in coronary artery disease patients. Consisting of nearly 146 million base pairs, chromosome 8 encodes over 800 genes and is associated with a variety of diseases and malignancies. Schizophrenia, bipolar disorder, Trisomy 8, Pfeiffer syndrome, congenital hypo-thyroidism, Waardenburg syndrome and some leukemias and lymphomas are thought to occur as a result of defects in specific genes that map to chromosome 8.

REFERENCES

1. Escribano, J. and Coca-Prados, M. 2002. Bioinformatics and reanalysis of subtracted expressed sequence tags from the human ciliary body: Identification of novel biological functions. *Mol. Vis.* 8: 315-332.
2. Naylor, T.L., Greshock, J., Wang, Y., Colligon, T., Yu, Q.C., Clemmer, V., Zaks, T.Z. and Weber, B.L. 2005. High resolution genomic analysis of sporadic breast cancer using array-based comparative genomic hybridization. *Breast Cancer Res.* 7: R1186-R1198.
3. Loo, J.J., Dann, H.M., Everts, R.E., Oliveira, R., Green, C.A., Guretzky, N.A., Rodriguez-Zas, S.L., Lewin, H.A. and Drackley, J.K. 2005. Temporal gene expression profiling of liver from periparturient dairy cows reveals complex adaptive mechanisms in hepatic function. *Physiol. Genomics* 23: 217-226.
4. Nusbaum, C., Mikkelsen, T.S., Zody, M.C., Asakawa, S., Taudien, S., Garber, M., Kodira, C.D., Schueler, M.G., Shimizu, A., Whittaker, C.A., Chang, J.L., et al. 2006. DNA sequence and analysis of human chromosome 8. *Nature* 439: 331-335.
5. Luo, X.Z., Wang, G., Xu, W., Li, Q., Chen, C., Zhang, Z.M., Hu, Q. and Wang, D. 2008. Preparation and preliminary application of a rabbit anti-human polyclonal antibody against NH₂-terminal peptides of RAI16. *Xi Bao Yu Fen Zi Mian Yi Xue Za Zhi* 24: 898-901.

CHROMOSOMAL LOCATION

Genetic locus: FAM160B2 (human) mapping to 8p21.3; Fam160b2 (mouse) mapping to 14 D2.

SOURCE

RAI16 (C-20) is an affinity purified goat polyclonal antibody raised against a peptide mapping near the C-terminus of RAI16 of human origin.

PRODUCT

Each vial contains 200 µg IgG in 1.0 ml of PBS with < 0.1% sodium azide and 0.1% gelatin.

Blocking peptide available for competition studies, sc-82334 P, (100 µg peptide in 0.5 ml PBS containing < 0.1% sodium azide and 0.2% BSA).

APPLICATIONS

RAI16 (C-20) is recommended for detection of RAI16 of mouse, rat and human origin by Western Blotting (starting dilution 1:200, dilution range 1:100-1:1000), immunoprecipitation [1-2 µg per 100-500 µg of total protein (1 ml of cell lysate)], immunofluorescence (starting dilution 1:50, dilution range 1:50-1:500) and solid phase ELISA (starting dilution 1:30, dilution range 1:30-1:3000).

RAI16 (C-20) is also recommended for detection of RAI16 in additional species, including equine, canine and porcine.

Suitable for use as control antibody for RAI16 siRNA (h): sc-76340, RAI16 siRNA (m): sc-76341, RAI16 shRNA Plasmid (h): sc-76340-SH, RAI16 shRNA Plasmid (m): sc-76341-SH, RAI16 shRNA (h) Lentiviral Particles: sc-76340-V and RAI16 shRNA (m) Lentiviral Particles: sc-76341-V.

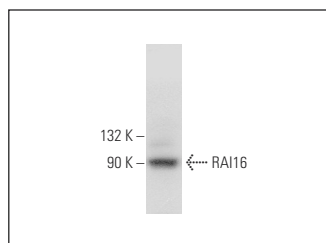
Molecular Weight of RAI16: 82 kDa.

Positive Controls: NIH/3T3 whole cell lysate: sc-2210 or HeLa whole cell lysate: sc-2200.

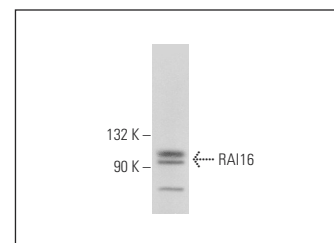
RECOMMENDED SECONDARY REAGENTS

To ensure optimal results, the following support (secondary) reagents are recommended: 1) Western Blotting: use donkey anti-goat IgG-HRP: sc-2020 (dilution range: 1:2000-1:100,000) or Cruz Marker™ compatible donkey anti-goat IgG-HRP: sc-2033 (dilution range: 1:2000-1:5000), Cruz Marker™ Molecular Weight Standards: sc-2035, TBS Blotto A Blocking Reagent: sc-2333 and Western Blotting Luminol Reagent: sc-2048. 2) Immunoprecipitation: use Protein A/G PLUS-Agarose: sc-2003 (0.5 ml agarose/2.0 ml). 3) Immunofluorescence: use donkey anti-goat IgG-FITC: sc-2024 (dilution range: 1:100-1:400) or donkey anti-goat IgG-TR: sc-2783 (dilution range: 1:100-1:400) with UltraCruz™ Mounting Medium: sc-24941.

DATA



RAI16 (C-20): sc-82334. Western blot analysis of RAI16 expression in HeLa whole cell lysate.



RAI16 (C-20): sc-82334. Western blot analysis of RAI16 expression in NIH/3T3 whole cell lysate.

STORAGE

Store at 4° C, **DO NOT FREEZE**. Stable for one year from the date of shipment. Non-hazardous. No MSDS required.

RESEARCH USE

For research use only, not for use in diagnostic procedures.