

# BCDIN3 (W-20): sc-82543

## BACKGROUND

BCDIN3 (bicoid-interacting protein 3), also known as MEPCE (methylphosphate capping enzyme), is a 689 amino acid protein that contains one BIN3 domain and belongs to the methyltransferase superfamily. Expressed in lung, brain, kidney, testis, mammary gland and cerebellum, BCDIN3 exists as a component of the multi-protein 7SK snRNP complex and functions as an S-adenosyl-L-methionine-dependent methyltransferase that stabilizes 7SK snRNA, specifically by adding a methylphosphate cap at the 5'-end of the snRNA. In addition to its expression in normal tissues, BCDIN3 is also present in chronic myeloid leukemia cells, suggesting a role in tumor progression and metastasis. The gene encoding BCDIN3 maps to human chromosome 7, which houses over 1,000 genes and comprises nearly 5% of the human genome. Defects in some of the genes localized to chromosome 7 have been linked to osteogenesis imperfecta, Williams-Beuren syndrome, Pendred syndrome, lissencephaly, Citrullinemia and Shwachman-Diamond syndrome.

## REFERENCES

- Rogers, S.A., Bowen, D.J., Ling, M., Thomson, P., Wang, Z. and Lim, S.H. 2002. Identification and characterization of a novel gene encoding a SEREX antigen in chronic myeloid leukaemia. *Br. J. Haematol.* 119: 112-114.
- Jeronimo, C., Forget, D., Bouchard, A., Li, Q., Chua, G., Poitras, C., Therien, C., Bergeron, D., Bourassa, S., Greenblatt, J., Chabot, B., Poirier, G.G., Hughes, T.R., Blanchette, M., Price, D.H. and Coulombe, B. 2007. Systematic analysis of the protein interaction network for the human transcription machinery reveals the identity of the 7SK capping enzyme. *Mol. Cell* 27: 262-274.
- Kaneko, S., Chu, C., Shatkin, A.J. and Manley, J.L. 2007. Human capping enzyme promotes formation of transcriptional R loops *in vitro*. *Proc. Natl. Acad. Sci. USA* 104: 17620-17625.
- Online Mendelian Inheritance in Man, OMIM™. 2007. Johns Hopkins University, Baltimore, MD. MIM Number: 611478. World Wide Web URL: <http://www.ncbi.nlm.nih.gov/omim/>
- Krueger, B.J., Jeronimo, C., Roy, B.B., Bouchard, A., Barrandon, C., Byers, S.A., Searcey, C.E., Cooper, J.J., Bensaude, O., Cohen, E.A., Coulombe, B. and Price, D.H. 2008. LARP7 is a stable component of the 7SK snRNP while P-TEFb, HEXIM1 and hnRNP A1 are reversibly associated. *Nucleic Acids Res.* 36: 2219-2229.

## CHROMOSOMAL LOCATION

Genetic locus: MEPCE (human) mapping to 7q22.1; Mepce (mouse) mapping to 5 G2.

## SOURCE

BCDIN3 (W-20) is an affinity purified goat polyclonal antibody raised against a peptide mapping within an internal region of BCDIN3 of human origin.

## PRODUCT

Each vial contains 200 µg IgG in 1.0 ml of PBS with < 0.1% sodium azide and 0.1% gelatin.

Blocking peptide available for competition studies, sc-82543 P, (100 µg peptide in 0.5 ml PBS containing < 0.1% sodium azide and 0.2% BSA).

## APPLICATIONS

BCDIN3 (W-20) is recommended for detection of BCDIN3 of mouse, rat and human origin by Western Blotting (starting dilution 1:200, dilution range 1:100-1:1000), immunoprecipitation [1-2 µg per 100-500 µg of total protein (1 ml of cell lysate)], immunofluorescence (starting dilution 1:50, dilution range 1:50-1:500) and solid phase ELISA (starting dilution 1:30, dilution range 1:30-1:3000).

BCDIN3 (W-20) is also recommended for detection of BCDIN3 in additional species, including equine, canine and porcine.

Suitable for use as control antibody for BCDIN3 siRNA (h): sc-72627, BCDIN3 siRNA (m): sc-72628, BCDIN3 shRNA Plasmid (h): sc-72627-SH, BCDIN3 shRNA Plasmid (m): sc-72628-SH, BCDIN3 shRNA (h) Lentiviral Particles: sc-72627-V and BCDIN3 shRNA (m) Lentiviral Particles: sc-72628-V.

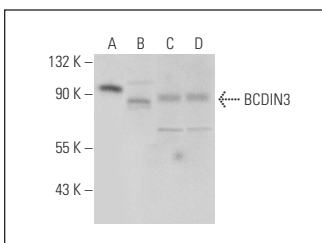
Molecular Weight of BCDIN3: 74 kDa.

Positive Controls: rat brain extract: sc-2392, mouse cerebellum extract: sc-2403 or HeLa whole cell lysate: sc-2200.

## RECOMMENDED SECONDARY REAGENTS

To ensure optimal results, the following support (secondary) reagents are recommended: 1) Western Blotting: use donkey anti-goat IgG-HRP: sc-2020 (dilution range: 1:2000-1:100,000) or Cruz Marker™ compatible donkey anti-goat IgG-HRP: sc-2033 (dilution range: 1:2000-1:5000), Cruz Marker™ Molecular Weight Standards: sc-2035, TBS Blotto A Blocking Reagent: sc-2333 and Western Blotting Luminol Reagent: sc-2048. 2) Immunoprecipitation: use Protein A/G PLUS-Agarose: sc-2003 (0.5 ml agarose/2.0 ml). 3) Immunofluorescence: use donkey anti-goat IgG-FITC: sc-2024 (dilution range: 1:100-1:400) or donkey anti-goat IgG-TR: sc-2783 (dilution range: 1:100-1:400) with UltraCruz™ Mounting Medium: sc-24941.

## DATA



BCDIN3 (W-20): sc-82543. Western blot analysis of BCDIN3 expression in mouse cerebellum (A) and rat brain (B) tissue extracts and MCF7 (C) and HeLa (D) whole cell lysates.

## STORAGE

Store at 4° C, \*\*DO NOT FREEZE\*\*. Stable for one year from the date of shipment. Non-hazardous. No MSDS required.

## RESEARCH USE

For research use only, not for use in diagnostic procedures.