

# GlcNAc kinase (G-20): sc-82613

## BACKGROUND

GlcNAc kinase, also known as GNK or NAGK (N-acetylglucosamine kinase), is a 344 amino acid homodimeric protein that is ubiquitously expressed. Belonging to the sugar kinase/HSP 70/Actin superfamily and the eukaryotic-type N-acetylglucosamine kinase family, GlcNAc kinase converts endogenous N-acetylglucosamine (GlcNAc), a major component of complex carbohydrates, from lysosomal degradation or nutritional sources into GlcNAc 6-phosphate. GlcNAc kinase is considered a salvage enzyme of amino sugar metabolism in mammals and predominately produces the  $\beta$  anomer of phosphorylated sugars. It is suggested that GlcNAc kinase has ManNAc kinase activity.

## CHROMOSOMAL LOCATION

Genetic locus: NAGK (human) mapping to 2p13.3; Nagk (mouse) mapping to 6 C3.

## SOURCE

GlcNAc kinase (G-20) is an affinity purified goat polyclonal antibody raised against a peptide mapping within an internal region of GlcNAc kinase of human origin.

## PRODUCT

Each vial contains 200  $\mu$ g IgG in 1.0 ml of PBS with < 0.1% sodium azide and 0.1% gelatin.

Blocking peptide available for competition studies, sc-82613 P, (100  $\mu$ g peptide in 0.5 ml PBS containing < 0.1% sodium azide and 0.2% BSA).

## STORAGE

Store at 4° C, \*\*DO NOT FREEZE\*\*. Stable for one year from the date of shipment. Non-hazardous. No MSDS required.

## APPLICATIONS

GlcNAc kinase (G-20) is recommended for detection of GlcNAc kinase of mouse, rat and human origin by Western Blotting (starting dilution 1:200, dilution range 1:100-1:1000), immunoprecipitation [1-2  $\mu$ g per 100-500  $\mu$ g of total protein (1 ml of cell lysate)], immunofluorescence (starting dilution 1:50, dilution range 1:50-1:500) and solid phase ELISA (starting dilution 1:30, dilution range 1:30-1:3000).

GlcNAc kinase (G-20) is also recommended for detection of GlcNAc kinase in additional species, including equine, canine, bovine and porcine.

Suitable for use as control antibody for GlcNAc kinase siRNA (h): sc-75136, GlcNAc kinase siRNA (m): sc-75137, GlcNAc kinase shRNA Plasmid (h): sc-75136-SH, GlcNAc kinase shRNA Plasmid (m): sc-75137-SH, GlcNAc kinase shRNA (h) Lentiviral Particles: sc-75136-V and GlcNAc kinase shRNA (m) Lentiviral Particles: sc-75137-V.

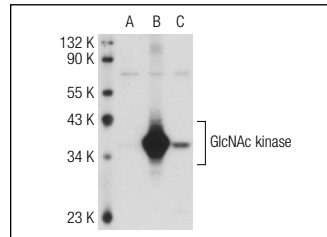
Molecular Weight of GlcNAc kinase: 37 kDa.

Positive Controls: GlcNAc kinase (m): 293T Lysate: sc-120498 or HeLa whole cell lysate: sc-2200.

## RECOMMENDED SECONDARY REAGENTS

To ensure optimal results, the following support (secondary) reagents are recommended: 1) Western Blotting: use donkey anti-goat IgG-HRP: sc-2020 (dilution range: 1:2000-1:100,000) or Cruz Marker™ compatible donkey anti-goat IgG-HRP: sc-2033 (dilution range: 1:2000-1:5000), Cruz Marker™ Molecular Weight Standards: sc-2035, TBS Blotto A Blocking Reagent: sc-2333 and Western Blotting Luminol Reagent: sc-2048. 2) Immunoprecipitation: use Protein A/G PLUS-Agarose: sc-2003 (0.5 ml agarose/2.0 ml). 3) Immunofluorescence: use donkey anti-goat IgG-FITC: sc-2024 (dilution range: 1:100-1:400) or donkey anti-goat IgG-TR: sc-2783 (dilution range: 1:100-1:400) with UltraCruz™ Mounting Medium: sc-24941.

## DATA



GlcNAc kinase (G-20): sc-82613. Western blot analysis of GlcNAc kinase expression in non-transfected 293T: sc-117752 (A), mouse GlcNAc kinase transfected 293T: sc-120498 (B) and HeLa (C) whole cell lysates.

## RESEARCH USE

For research use only, not for use in diagnostic procedures.

## PROTOCOLS

See our web site at [www.scbt.com](http://www.scbt.com) or our catalog for detailed protocols and support products.

**MONOS**  
Satisfaction  
Guaranteed

Try **GlcNAc kinase (G-5): sc-390499**, our highly recommended monoclonal alternative to GlcNAc kinase (G-20).