

CNOT6 (W-18): sc-82832

BACKGROUND

CNOT6 is a widely expressed subunit of the CCR4-NOT transcription complex. The CCR4-NOT complex is an evolutionarily conserved, multi-component complex known to be involved in transcription as well as mRNA degradation. Various subunits (e.g. CNOT1, CNOT3) are involved in influencing nuclear hormone receptor activities. The CCR4-NOT complex is also involved in the regulation of Histone H3 lysine 4 methylation through a ubiquitin-dependent pathway that likely involves the proteasome. CNOT6 belongs to the CCR4/nocturin family and contains three LRR (leucine-rich) repeats. In the cytoplasm, CNOT6 acts as a poly(A) nuclease involved in mRNA decay mediated by the major-protein-coding determinant of instability (mCRD) of the Fos gene.

CHROMOSOMAL LOCATION

Genetic locus: CNOT6 (human) mapping to 5q35.3 ; Cnot6 (mouse) mapping to 11 B1.2.

SOURCE

CNOT6 (W-18) is an affinity purified goat polyclonal antibody raised against a peptide mapping near the C-terminus of CNOT6 of human origin.

PRODUCT

Each vial contains 200 µg IgG in 1.0 ml of PBS with < 0.1% sodium azide and 0.1% gelatin. Also available as TransCruz reagent for Gel Supershift and ChIP applications, sc-82832 X, 200 µg/0.1 ml.

Blocking peptide available for competition studies, sc-82832 P, (100 µg peptide in 0.5 ml PBS containing < 0.1% sodium azide and 0.2% BSA).

STORAGE

Store at 4° C, ****DO NOT FREEZE****. Stable for one year from the date of shipment. Non-hazardous. No MSDS required.

APPLICATIONS

CNOT6 (W-18) is recommended for detection of CNOT6 of mouse, rat and human origin by Western Blotting (starting dilution 1:200, dilution range 1:100-1:1000), immunoprecipitation [1-2 µg per 100-500 µg of total protein (1 ml of cell lysate)], immunofluorescence (starting dilution 1:50, dilution range 1:50-1:500) and solid phase ELISA (starting dilution 1:30, dilution range 1:30-1:3000); non cross-reactive with other CNOT family members.

CNOT6 (W-18) is also recommended for detection of CNOT6 in additional species, including equine, canine, bovine, porcine and avian.

Suitable for use as control antibody for CNOT6 siRNA (h): sc-72944, CNOT6 siRNA (m): sc-72945, CNOT6 shRNA Plasmid (h): sc-72944-SH, CNOT6 shRNA Plasmid (m): sc-72945-SH, CNOT6 shRNA (h) Lentiviral Particles: sc-72944-V and CNOT6 shRNA (m) Lentiviral Particles: sc-72945-V.

CNOT6 (W-18) X TransCruz antibody is recommended for Gel Supershift and ChIP applications.

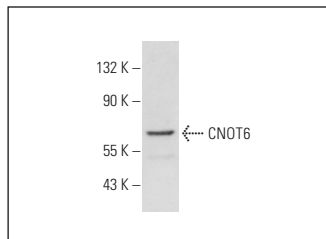
Molecular Weight of CNOT6: 63 kDa.

Positive Controls: NIH/3T3 whole cell lysate: sc-2210.

RECOMMENDED SECONDARY REAGENTS

To ensure optimal results, the following support (secondary) reagents are recommended: 1) Western Blotting: use donkey anti-goat IgG-HRP: sc-2020 (dilution range: 1:2000-1:100,000) or Cruz Marker™ compatible donkey anti-goat IgG-HRP: sc-2033 (dilution range: 1:2000-1:5000), Cruz Marker™ Molecular Weight Standards: sc-2035, TBS Blotto A Blocking Reagent: sc-2333 and Western Blotting Luminol Reagent: sc-2048. 2) Immunoprecipitation: use Protein A/G PLUS-Agarose: sc-2003 (0.5 ml agarose/2.0 ml). 3) Immunofluorescence: use donkey anti-goat IgG-FITC: sc-2024 (dilution range: 1:100-1:400) or donkey anti-goat IgG-TR: sc-2783 (dilution range: 1:100-1:400) with UltraCruz™ Mounting Medium: sc-24941.

DATA



CNOT6 (W-18): sc-82832. Western blot analysis of CNOT6 expression in NIH/3T3 whole cell lysate.

RESEARCH USE

For research use only, not for use in diagnostic procedures.

PROTOCOLS

See our web site at www.scbt.com or our catalog for detailed protocols and support products.

MONOS
Satisfaction
Guaranteed

Try **CNOT6 (2193C2a): sc-81231**, our highly recommended monoclonal alternative to CNOT6 (W-18).