

# COL8A2 (N-16): sc-82843

## BACKGROUND

COL8A2 (collagen  $\alpha$ -2(VIII) chain), also known as endothelial collagen, is a 703 amino acid secreted protein. COL8A2 is a major component of the Descemet membrane (basement membrane) of corneal endothelial cells. COL8A2 can form homodimers as well as heterodimers with COL8A1. Defects in COL8A2 are a cause for posterior polymorphous corneal dystrophy (PPCD) and Fuchs endothelial corneal dystrophy (FECF), both being disorders with visual impairment occurring in adulthood. COL8A2 is also the cause of posterior polymorphous corneal dystrophy 2 (PPCD2), a rare familial disorder that occurs from birth onwards.

## CHROMOSOMAL LOCATION

Genetic locus: COL8A2 (human) mapping to 1p34.3; Col8a2 (mouse) mapping to 4 D2.2.

## SOURCE

COL8A2 (N-16) is an affinity purified goat polyclonal antibody raised against a peptide mapping near the N-terminus of COL8A2 of human origin.

## PRODUCT

Each vial contains 200  $\mu$ g IgG in 1.0 ml of PBS with < 0.1% sodium azide and 0.1% gelatin.

Blocking peptide available for competition studies, sc-82843 P, (100  $\mu$ g peptide in 0.5 ml PBS containing < 0.1% sodium azide and 0.2% BSA).

## STORAGE

Store at 4° C, **\*\*DO NOT FREEZE\*\***. Stable for one year from the date of shipment. Non-hazardous. No MSDS required.

## RESEARCH USE

For research use only, not for use in diagnostic procedures.

## APPLICATIONS

COL8A2 (N-16) is recommended for detection of Collagen  $\alpha$ 2 type VIII of mouse, rat and human origin by Western Blotting (starting dilution 1:200, dilution range 1:100-1:1000), immunoprecipitation [1-2  $\mu$ g per 100-500  $\mu$ g of total protein (1 ml of cell lysate)], immunofluorescence (starting dilution 1:50, dilution range 1:50-1:500) and solid phase ELISA (starting dilution 1:30, dilution range 1:30-1:3000); non cross-reactive with family members Collagen  $\alpha$ 2 type I or Collagen  $\alpha$ 2 type XI.

COL8A2 (N-16) is also recommended for detection of Collagen  $\alpha$ 2 type VIII in additional species, including equine and bovine.

Suitable for use as control antibody for COL8A2 siRNA (h): sc-72951, COL8A2 siRNA (m): sc-72952, COL8A2 shRNA Plasmid (h): sc-72951-SH, COL8A2 shRNA Plasmid (m): sc-72952-SH, COL8A2 shRNA (h) Lentiviral Particles: sc-72951-V and COL8A2 shRNA (m) Lentiviral Particles: sc-72952-V.

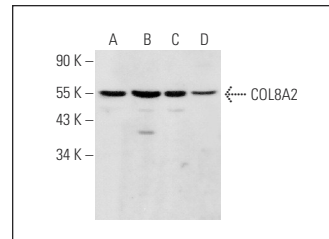
Molecular Weight of COL8A2: 67 kDa.

Positive Controls: HeLa whole cell lysate: sc-2200, Jurkat whole cell lysate: sc-2204 or K-562 whole cell lysate: sc-2203.

## RECOMMENDED SECONDARY REAGENTS

To ensure optimal results, the following support (secondary) reagents are recommended: 1) Western Blotting: use donkey anti-goat IgG-HRP: sc-2020 (dilution range: 1:2000-1:100,000) or Cruz Marker™ compatible donkey anti-goat IgG-HRP: sc-2033 (dilution range: 1:2000-1:5000), Cruz Marker™ Molecular Weight Standards: sc-2035, TBS Blotto A Blocking Reagent: sc-2333 and Western Blotting Luminol Reagent: sc-2048. 2) Immunoprecipitation: use Protein A/G PLUS-Agarose: sc-2003 (0.5 ml agarose/2.0 ml). 3) Immunofluorescence: use donkey anti-goat IgG-FITC: sc-2024 (dilution range: 1:100-1:400) or donkey anti-goat IgG-TR: sc-2783 (dilution range: 1:100-1:400) with UltraCruz™ Mounting Medium: sc-24941.

## DATA



COL8A2 (N-16): sc-82843. Western blot analysis of COL8A2 expression in HeLa (A), Jurkat (B), K-562 (C) and CCRF-CEM (D) whole cell lysates.

## PROTOCOLS

See our web site at [www.scbt.com](http://www.scbt.com) or our catalog for detailed protocols and support products.

**MONOS**  
Satisfaction  
Guaranteed

Try **COL8A2 (1F4): sc-293350**, our highly recommended monoclonal alternative to COL8A2 (N-16).