

SOCS-6 (C-19): sc-8289

BACKGROUND

The SOCS (suppressor of cytokine signaling) gene family consists of a group of proteins that negatively regulate cytokine signal transduction. The SOCS family proteins contain a central SH2 domain and a carboxy-terminal region termed the "SOCS box." The SOCS-1 (also called SSI-1 and JAB), SOCS-2 (also called SSI-2 and CIS2) and SOCS-3 (also called SSI-3 and CIS3) genes are known to be upregulated by IL-6 and other cytokines. SOCS-4, SOCS-5, SOCS-6 and SOCS-7 were identified by their sequence homology with the SOCS box. CIS (for cytokine-inducible SH2-containing protein) is also a member of the SOCS family.

REFERENCES

1. Yoshimura, A., et al. 1995. A novel cytokine-inducible gene CIS encodes an SH2-containing protein that binds to tyrosine-phosphorylated interleukin-3 and erythropoietin receptors. *EMBO J.* 14: 2816-2826.
2. Matsumoto, A., et al. 1997. CIS, a cytokine inducible SH2 protein, is a target of the JAK/Stat5 pathway and modulates Stat5 activation. *Blood* 89: 3148-3154.

CHROMOSOMAL LOCATION

Genetic locus: SOCS6 (human) mapping to 18q22.2.

SOURCE

SOCS-6 (C-19) is available as either goat (sc-8289) or rabbit (sc-8289-R) polyclonal affinity purified antibody raised against a peptide mapping at the C-terminus of SOCS-6 of human origin.

PRODUCT

Each vial contains 200 µg IgG in 1.0 ml of PBS with < 0.1% sodium azide and 0.1% gelatin.

Blocking peptide available for competition studies, sc-8289 P, (100 µg peptide in 0.5 ml PBS containing < 0.1% sodium azide and 0.2% BSA).

APPLICATIONS

SOCS-6 (C-19) is recommended for detection of SOCS-6 of human origin by Western Blotting (starting dilution 1:200, dilution range 1:100-1:1000), immunoprecipitation [1-2 µg per 100-500 µg of total protein (1 ml of cell lysate)], immunofluorescence (starting dilution 1:50, dilution range 1:50-1:500) and solid phase ELISA (starting dilution 1:30, dilution range 1:30-1:3000).

SOCS-6 (C-19) is also recommended for detection of SOCS-6 in additional species, including equine, canine, bovine, porcine and avian.

Suitable for use as control antibody for SOCS-6 siRNA (h): sc-36520, SOCS-6 shRNA Plasmid (h): sc-36520-SH and SOCS-6 shRNA (h) Lentiviral Particles: sc-36520-V.

Molecular Weight (predicted) of SOCS-6: 60 kDa.

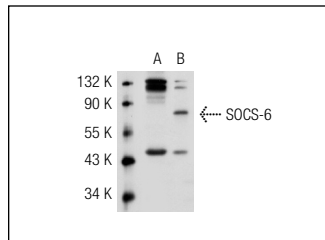
Molecular Weight (observed) of SOCS-6: 62-82 kDa.

Positive Controls: SOCS-6 (h): CHO Lysate: sc-110015.

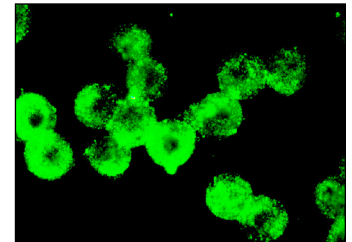
RECOMMENDED SECONDARY REAGENTS

To ensure optimal results, the following support (secondary) reagents are recommended: 1) Western Blotting: for goat primary antibody (sc-8289): use donkey anti-goat IgG-HRP: sc-2020 (dilution range: 1:2000-1:100,000) or Cruz Marker™ compatible donkey anti-goat IgG-HRP: sc-2033 (dilution range: 1:2000-1:5000), for rabbit primary antibody (sc-8289-R): use goat anti-rabbit IgG-HRP: sc-2004 (dilution range: 1:2000-1:100,000) or Cruz Marker™ compatible goat anti-rabbit IgG-HRP: sc-2030 (dilution range: 1:2000-1:5000), Cruz Marker™ Molecular Weight Standards: sc-2035, TBS Blotto A Blocking Reagent: sc-2333 and Western Blotting Luminol Reagent: sc-2048. 2) Immunoprecipitation: use Protein A/G PLUS-Agarose: sc-2003 (0.5 ml agarose/2.0 ml). 3) Immunofluorescence: for goat primary antibody (sc-8289): use donkey anti-goat IgG-FITC: sc-2024 (dilution range: 1:100-1:400) or donkey anti-goat IgG-TR: sc-2783 (dilution range: 1:100-1:400) with UltraCruz™ Mounting Medium: sc-24941, for rabbit primary antibody (sc-8289-R): use goat anti-rabbit IgG-FITC: sc-2012 (dilution range: 1:100-1:400) or goat anti-rabbit IgG-TR: sc-2780 (dilution range: 1:100-1:400) with UltraCruz™ Mounting Medium: sc-24941.

DATA



SOCS-6 (C-19)-R: sc-8289-R. Western blot analysis of SOCS-6 expression in non-transfected: sc-117750 (A) and human SOCS-6 transfected: sc-110015 (B) CHO whole cell lysates.



SOCS-6 (C-19): sc-8289. Immunofluorescence staining of methanol-fixed BJAB cells showing cytoplasmic localization.

STORAGE

Store at 4° C, **DO NOT FREEZE**. Stable for one year from the date of shipment. Non-hazardous. No MSDS required.

RESEARCH USE

For research use only, not for use in diagnostic procedures.

PROTOCOLS

See our web site at www.scbt.com or our catalog for detailed protocols and support products.