

# PHF5A (V-12): sc-82995

## BACKGROUND

PHF5A (PHD finger protein 5A), also known as SF3b14b or INI, is a 110 amino acid protein that contains one PHD finger-like domain and localizes to the nucleus. One of several members of the PHD finger superfamily, PHF5A functions as a subunit of the SF3A splicing factor complex, a heterotrimeric complex comprised of multiple subunits that act in tandem to mediate the binding of U2 snRNP to the branchpoint sequence (BPS) in pre-mRNA. The SF3A complex is necessary for the conversion of 15S U2 snRNP into the active 17S protein that performs directly in pre-mRNA splicing events. In conjunction with other members of the SF3A complex, PHF5A plays an important role in mediating pre-mRNA splicing and transcription. The gene encoding PHF5A maps to human chromosome 22, which houses over 500 genes and is the second smallest human chromosome.

## REFERENCES

1. Trappe, R., Ahmed, M., Gläser, B., Vogel, C., Tascou, S., Burfeind, P. and Engel, W. 2002. Identification and characterization of a novel murine multigene family containing a PHD-finger-like motif. *Biochem. Biophys. Res. Commun.* 293: 816-826.
2. Will, C.L., Urlaub, H., Achsel, T., Gentzel, M., Wilm, M. and Lührmann, R. 2002. Characterization of novel SF3B and 17S U2 snRNP proteins, including a human Prp5p homologue and an SF3B DEAD-box protein. *EMBO J.* 21: 4978-4988.
3. Zhou, Z., Licklider, L.J., Gygi, S.P. and Reed, R. 2002. Comprehensive proteomic analysis of the human spliceosome. *Nature.* 419: 182-185.
4. Will, C.L., Schneider, C., Hossbach, M., Urlaub, H., Rauhut, R., Elbashir, S., Tuschl, T. and Lührmann, R. 2004. The human 18S U11/U12 snRNP contains a set of novel proteins not found in the U2-dependent spliceosome. *RNA.* 10: 929-941.
5. Rzymiski, T., Grzmil, P., Meinhardt, A., Wolf, S. and Burfeind, P. 2008. PHF5A represents a bridge protein between splicing proteins and ATP-dependent helicases and is differentially expressed during mouse spermatogenesis. *Cytogenet. Genome Res.* 121: 232-244.
6. Kuwasako, K., Dohmae, N., Inoue, M., Shirouzu, M., Taguchi, S., Güntert, P., Seraphin, B., Muto, Y. and Yokoyama, S. 2008. Complex assembly mechanism and an RNA-binding mode of the human p14-SF3b155 spliceosomal protein complex identified by NMR solution structure and functional analyses. *Proteins.* 71: 1617-1636.

## CHROMOSOMAL LOCATION

Genetic locus: PHF5A (human) mapping to 22q13.2; Phf5a (mouse) mapping to 15 E1.

## SOURCE

PHF5A (V-12) is an affinity purified rabbit polyclonal antibody raised against a peptide mapping within an internal region of PHF5A of human origin.

## STORAGE

Store at 4° C, **\*\*DO NOT FREEZE\*\***. Stable for one year from the date of shipment. Non-hazardous. No MSDS required.

## PRODUCT

Each vial contains 100 µg IgG in 1.0 ml of PBS with < 0.1% sodium azide and 0.1% gelatin.

Blocking peptide available for competition studies, sc-82995 P, (100 µg peptide in 0.5 ml PBS containing < 0.1% sodium azide and 0.2% BSA).

Available as TransCruz reagent for Gel Supershift and ChIP applications, sc-82995 X, 200 µg/0.1 ml.

## APPLICATIONS

PHF5A (V-12) is recommended for detection of PHF5A of mouse, rat and human origin by Western Blotting (starting dilution 1:200, dilution range 1:100-1:1000), immunoprecipitation [1-2 µg per 100-500 µg of total protein (1 ml of cell lysate)], immunofluorescence (starting dilution 1:50, dilution range 1:50-1:500) and solid phase ELISA (starting dilution 1:30, dilution range 1:30-1:3000); non cross-reactive with other PHF family members.

PHF5A (V-12) is also recommended for detection of PHF5A in additional species, including canine.

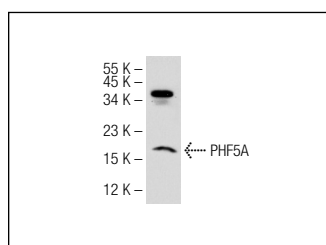
Suitable for use as control antibody for PHF5A siRNA (h): sc-76119, PHF5A siRNA (m): sc-76120, PHF5A shRNA Plasmid (h): sc-76119-SH, PHF5A shRNA Plasmid (m): sc-76120-SH, PHF5A shRNA (h) Lentiviral Particles: sc-76119-V and PHF5A shRNA (m) Lentiviral Particles: sc-76120-V.

PHF5A (V-12) X TransCruz antibody is recommended for Gel Supershift and ChIP applications.

Molecular Weight of PHF5A: 12 kDa.

Positive Controls: HeLa whole cell lysate: sc-2200.

## DATA



PHF5A (V-12): sc-82995. Western blot analysis of PHF5A expression in HeLa whole cell lysate.

## RESEARCH USE

For research use only, not for use in diagnostic procedures.

## PROTOCOLS

See our web site at [www.scbt.com](http://www.scbt.com) or our catalog for detailed protocols and support products.