

# Rab11-FIP1 (S-20): sc-83024

## BACKGROUND

Rab11-FIP1 (Rab 11 family-interacting protein 1), also known as Rab-coupling protein (RCP), is a 1,283 amino acid Rab 11 effector protein. Rab11-FIP1, by interacting with Rab GTPases, is involved in the endosomal recycling process and may play a role in controlling membrane trafficking along the phagocytic pathway and during phagocytosis. Localized to the recycling endosome, the cytoplasmic membrane and phagosome membranes, Rab11-FIP1 is expressed as five isoforms produced by alternative splicing. As the most highly expressed isoform, isoform 2 of Rab11-FIP1 is expressed in brain, lung, testis, small intestine, spleen and heart. Isoform 2 of Rab11-FIP1 also has been found to form a homooligomer and is believed to interact with many Rab GTPases, including Rab 4A, Rab 11A, Rab 11B and Rab 25.

## CHROMOSOMAL LOCATION

Genetic locus: RAB11FIP1 (human) mapping to 8p11.23; Rab11fip1 (mouse) mapping to 8 A2.

## SOURCE

Rab11-FIP1 (S-20) is an affinity purified goat polyclonal antibody raised against a peptide mapping within an internal region of Rab11-FIP1 of human origin.

## PRODUCT

Each vial contains 200 µg IgG in 1.0 ml of PBS with < 0.1% sodium azide and 0.1% gelatin.

Blocking peptide available for competition studies, sc-83024 P, (100 µg peptide in 0.5 ml PBS containing < 0.1% sodium azide and 0.2% BSA).

## STORAGE

Store at 4° C, \*\*DO NOT FREEZE\*\*. Stable for one year from the date of shipment. Non-hazardous. No MSDS required.

## APPLICATIONS

Rab11-FIP1 (S-20) is recommended for detection of Rab11-FIP1 of mouse and human origin by Western Blotting (starting dilution 1:200, dilution range 1:100-1:1000), immunoprecipitation [1-2 µg per 100-500 µg of total protein (1 ml of cell lysate)], immunofluorescence (starting dilution 1:50, dilution range 1:50-1:500) and solid phase ELISA (starting dilution 1:30, dilution range 1:30-1:3000); non cross-reactive with isoforms Rab11-FIP1-3 and Rab11-FIP1-5.

Rab11-FIP1 (S-20) is also recommended for detection of Rab11-FIP1 in additional species, including equine, canine, bovine and porcine.

Suitable for use as control antibody for Rab11-FIP1 siRNA (h): sc-76331, Rab11-FIP1 siRNA (m): sc-76332, Rab11-FIP1 shRNA Plasmid (h): sc-76331-SH, Rab11-FIP1 shRNA Plasmid (m): sc-76332-SH, Rab11-FIP1 shRNA (h) Lentiviral Particles: sc-76331-V and Rab11-FIP1 shRNA (m) Lentiviral Particles: sc-76332-V.

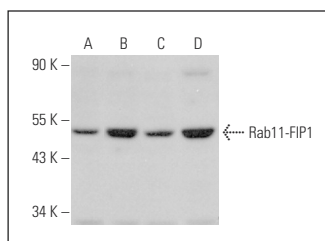
Molecular Weight of Rab11-FIP1 isoforms: 137/77/68/48 kDa.

Positive Controls: Neuro-2A whole cell lysate: sc-364185, SP2/0 whole cell lysate: sc-364795 or F9 cell lysate: sc-2245.

## RECOMMENDED SECONDARY REAGENTS

To ensure optimal results, the following support (secondary) reagents are recommended: 1) Western Blotting: use donkey anti-goat IgG-HRP: sc-2020 (dilution range: 1:2000-1:100,000) or Cruz Marker™ compatible donkey anti-goat IgG-HRP: sc-2033 (dilution range: 1:2000-1:5000), Cruz Marker™ Molecular Weight Standards: sc-2035, TBS Blotto A Blocking Reagent: sc-2333 and Western Blotting Luminol Reagent: sc-2048. 2) Immunoprecipitation: use Protein A/G PLUS-Agarose: sc-2003 (0.5 ml agarose/2.0 ml). 3) Immunofluorescence: use donkey anti-goat IgG-FITC: sc-2024 (dilution range: 1:100-1:400) or donkey anti-goat IgG-TR: sc-2783 (dilution range: 1:100-1:400) with UltraCruz™ Mounting Medium: sc-24941.

## DATA



Rab11-FIP1 (S-20): sc-83024. Western blot analysis of Rab11-FIP1 expression in AMJZ-C8 (A), SP2/0 (B), Neuro-2A (C) and F9 (D) whole cell lysates.

## RESEARCH USE

For research use only, not for use in diagnostic procedures.

## PROTOCOLS

See our web site at [www.scbt.com](http://www.scbt.com) or our catalog for detailed protocols and support products.

**MONOS**  
Satisfaction  
Guaranteed

Try **Rab11-FIP1 (3A12H9D2): sc-517228**, our highly recommended monoclonal alternative to Rab11-FIP1 (S-20).