

Tuba (D-17): sc-83055

BACKGROUND

Tuba, also known as DNMBP (dynamin binding protein), is a 1,577 amino acid protein that localizes to a variety of locations within the cell, including the cytoplasm, cytoskeleton, cell junction and Golgi apparatus and contains one BAR domain, one DH domain and 6 SH3 domains. Expressed in kidney, heart, lung, liver, brain, pancreas and skeletal muscle, Tuba functions as a scaffold protein that links Dynamin with Actin-regulating proteins and is thought to play a role in protein trafficking between the golgi and the cell surface. Two isoforms of Tuba exist due to alternative splicing events. The gene encoding Tuba maps to human chromosome 10, which houses over 1,200 genes and comprises nearly 4.5% of the human genome. Defects in some of the genes that map to chromosome 10 are associated with Charcot-Marie Tooth disease, Jackson-Weiss syndrome, Usher syndrome, nonsyndromic deafness, Wolman's syndrome, Cowden syndrome, multiple endocrine neoplasia type 2 and porphyria.

CHROMOSOMAL LOCATION

Genetic locus: DNMBP (human) mapping to 10q24.2; Dnmbp (mouse) mapping to 19 C3.

SOURCE

Tuba (D-17) is an affinity purified goat polyclonal antibody raised against a peptide mapping within an internal region of Tuba of human origin.

PRODUCT

Each vial contains 200 µg IgG in 1.0 ml of PBS with < 0.1% sodium azide and 0.1% gelatin.

Blocking peptide available for competition studies, sc-83055 P, (100 µg peptide in 0.5 ml PBS containing < 0.1% sodium azide and 0.2% BSA).

RESEARCH USE

For research use only, not for use in diagnostic procedures.

APPLICATIONS

Tuba (D-17) is recommended for detection of Tuba of mouse, rat and human origin by Western Blotting (starting dilution 1:200, dilution range 1:100-1:1000), immunoprecipitation [1-2 µg per 100-500 µg of total protein (1 ml of cell lysate)], immunofluorescence (starting dilution 1:50, dilution range 1:50-1:500) and solid phase ELISA (starting dilution 1:30, dilution range 1:30-1:3000).

Tuba (D-17) is also recommended for detection of Tuba in additional species, including equine, canine, bovine, porcine and avian.

Suitable for use as control antibody for Tuba siRNA (h): sc-76775, Tuba siRNA (m): sc-76776, Tuba shRNA Plasmid (h): sc-76775-SH, Tuba shRNA Plasmid (m): sc-76776-SH, Tuba shRNA (h) Lentiviral Particles: sc-76775-V and Tuba shRNA (m) Lentiviral Particles: sc-76776-V.

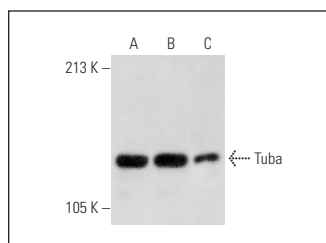
Molecular Weight of Tuba: 180 kDa.

Positive Controls: HeLa whole cell lysate: sc-2200, MCF7 whole cell lysate: sc-2206 or mouse testis extract: sc-2405.

RECOMMENDED SECONDARY REAGENTS

To ensure optimal results, the following support (secondary) reagents are recommended: 1) Western Blotting: use donkey anti-goat IgG-HRP: sc-2020 (dilution range: 1:2000-1:100,000) or Cruz Marker™ compatible donkey anti-goat IgG-HRP: sc-2033 (dilution range: 1:2000-1:5000), Cruz Marker™ Molecular Weight Standards: sc-2035, TBS Blotto A Blocking Reagent: sc-2333 and Western Blotting Luminol Reagent: sc-2048. 2) Immunoprecipitation: use Protein A/G PLUS-Agarose: sc-2003 (0.5 ml agarose/2.0 ml). 3) Immunofluorescence: use donkey anti-goat IgG-FITC: sc-2024 (dilution range: 1:100-1:400) or donkey anti-goat IgG-TR: sc-2783 (dilution range: 1:100-1:400) with UltraCruz™ Mounting Medium: sc-24941.

DATA



Tuba (D-17): sc-83055. Western blot analysis of Tuba expression in HeLa (A) and MCF7 (B) whole cell lysates and mouse testis tissue extract (C).

STORAGE

Store at 4° C, ****DO NOT FREEZE****. Stable for one year from the date of shipment. Non-hazardous. No MSDS required.

PROTOCOLS

See our web site at www.scbt.com or our catalog for detailed protocols and support products.

MONOS
Satisfaction
Guaranteed

Try **Tuba (MH-8): sc-135592**, our highly recommended monoclonal alternative to Tuba (D-17).