

ABCC13 (S-14): sc-83185

BACKGROUND

The ATP-binding cassette (ABC) superfamily is comprised of transmembrane proteins involved in energy-dependent transport of a variety of substrates across membranes. ABCC13 is a 274 amino acid protein belonging to the MRP subfamily of the ABC transporter family. ABCC13 contains one ABC transmembrane type-1 domain, but does not contain Walker A, Walker B, and signature C motifs that are present in most ABC proteins, which indicates ABCC13 is not a functional transporter. ABCC13 has highest levels in colon and is present at lower levels in brain, liver, placenta, lung, ovary and pancreas. ABCC13 is expressed as five isoforms produced by alternative splicing.

REFERENCES

1. Dean, M., Rzhetsky, A. and Allikmets, R. 2001. The human ATP-binding cassette (ABC) transporter superfamily. *Genome Res.* 11: 1156-1166.
2. Yabuuchi, H., Takayanagi, S., Yoshinaga, K., Taniguchi, N., Aburatani, H. and Ishikawa, T. 2002. ABCC13, an unusual truncated ABC transporter, is highly expressed in fetal human liver. *Biochem. Biophys. Res. Commun.* 299: 410-417.
3. Gardiner, K., Slavov, D., Bechtel, L. and Davisson, M. 2002. Annotation of human chromosome 21 for relevance to Down syndrome: gene structure and expression analysis. *Genomics* 79: 833-843.
4. Brun, M.E., Ruault, M., Ventura, M., Roizès, G. and De Sario, A. 2003. Juxtacentromeric region of human chromosome 21: a boundary between centromeric heterochromatin and euchromatic chromosome arms. *Gene* 312: 41-50.
5. Online Mendelian Inheritance in Man, OMIM[™]. 2004. Johns Hopkins University, Baltimore, MD. MIM Number: 608835. World Wide Web URL: <http://www.ncbi.nlm.nih.gov/omim/>

CHROMOSOMAL LOCATION

Genetic locus: ABCC13 (human) mapping to 21q11.2.

SOURCE

ABCC13 (S-14) is an affinity purified rabbit polyclonal antibody raised against a peptide mapping within an internal region of ABCC13 of human origin.

PRODUCT

Each vial contains 100 µg IgG in 1.0 ml of PBS with < 0.1% sodium azide and 0.1% gelatin.

Blocking peptide available for competition studies, sc-83185 P, (100 µg peptide in 0.5 ml PBS containing < 0.1% sodium azide and 0.2% BSA).

STORAGE

Store at 4° C, **DO NOT FREEZE**. Stable for one year from the date of shipment. Non-hazardous. No MSDS required.

RESEARCH USE

For research use only, not for use in diagnostic procedures.

APPLICATIONS

ABCC13 (S-14) is recommended for detection of ABCC13 of human origin by Western Blotting (starting dilution 1:200, dilution range 1:100-1:1000), immunoprecipitation [1-2 µg per 100-500 µg of total protein (1 ml of cell lysate)], immunofluorescence (starting dilution 1:50, dilution range 1:50-1:500), immunohistochemistry (including paraffin-embedded sections) (starting dilution 1:50, dilution range 1:50-1:500) and solid phase ELISA (starting dilution 1:30, dilution range 1:30-1:3000); non cross-reactive with other ABC family members.

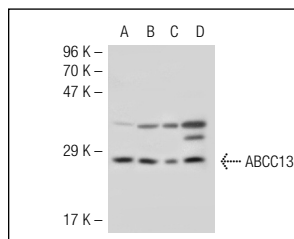
Molecular Weight of ABCC13 isoforms: 16-37 kDa.

Positive Controls: Hep G2 cell lysate: sc-2227, SW480 cell lysate: sc-2219 or JAR cell lysate: sc-2276.

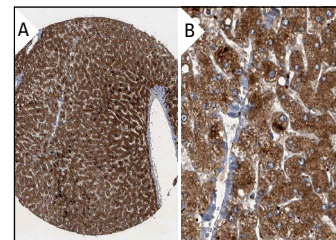
RECOMMENDED SECONDARY REAGENTS

To ensure optimal results, the following support (secondary) reagents are recommended: 1) Western Blotting: use goat anti-rabbit IgG-HRP: sc-2004 (dilution range: 1:2000-1:100,000) or Cruz Marker[™] compatible goat anti-rabbit IgG-HRP: sc-2030 (dilution range: 1:2000-1:5000), Cruz Marker[™] Molecular Weight Standards: sc-2035, TBS Blotto A Blocking Reagent: sc-2333 and Western Blotting Luminol Reagent: sc-2048. 2) Immunoprecipitation: use Protein A/G PLUS-Agarose: sc-2003 (0.5 ml agarose/2.0 ml). 3) Immunofluorescence: use goat anti-rabbit IgG-FITC: sc-2012 (dilution range: 1:100-1:400) or goat anti-rabbit IgG-TR: sc-2780 (dilution range: 1:100-1:400) with UltraCruz[™] Mounting Medium: sc-24941. 4) Immunohistochemistry: use ImmunoCruz[™]: sc-2051 or ABC: sc-2018 rabbit IgG Staining Systems.

DATA



ABCC13 (S-14): sc-83185. Western blot analysis of ABCC13 expression in HEK293 (A), SW480 (B), JAR (C) and A549 (D) whole cell lysates.



ABCC13 (S-14): sc-83185. Immunoperoxidase staining of formalin fixed, paraffin-embedded human liver tissue showing cytoplasmic staining of hepatocytes in low (A) and high (B) resolution. Kindly provided by The Swedish Human Protein Atlas (HPA) program.

PROTOCOLS

See our web site at www.scbt.com or our catalog for detailed protocols and support products.

MONOS
Satisfaction
Guaranteed

Try **ABCC13 (B-2): sc-390691**, our highly recommended monoclonal alternative to ABCC13 (S-14).