

FAM3B (C-14): sc-83250

BACKGROUND

FAM3B (family with sequence similarity 3, member B), also known as ORF9, C21orf11 or PANDER (pancreatic-derived factor), is a 235 amino acid secreted protein that localizes to discrete vesicular and perinuclear structures. Expressed at high levels in pancreas and at lower levels in kidney, colon, testis, prostate and small intestine, FAM3B functions as an islet-specific cytokine that promotes apoptosis and may inhibit Insulin secretion from β -cells, possibly playing a role in overall pancreatic activity. FAM3B may also function in the regulation of glycemic levels, with possible correlations to the onset of diabetes. Human FAM3B shares 78% sequence identity with its mouse counterpart, suggesting a conserved role between species. Three isoforms of FAM3B, designated A, B and C, exist due to alternative splicing events. The gene encoding FAM3B maps to human chromosome 21, which houses approximately 300 genes and comprises nearly 1.5% of the human genome.

CHROMOSOMAL LOCATION

Genetic locus: FAM3B (human) mapping to 21q22.3; ORF9 (mouse) mapping to 16 C4.

SOURCE

FAM3B (C-14) is an affinity purified rabbit polyclonal antibody raised against a peptide mapping near the C-terminus of FAM3B of human origin.

PRODUCT

Each vial contains 100 μ g IgG in 1.0 ml of PBS with < 0.1% sodium azide and 0.1% gelatin.

Blocking peptide available for competition studies, ready P, (100 μ g peptide in 0.5 ml PBS containing < 0.1% sodium azide and 0.2% BSA).

APPLICATIONS

FAM3B (C-14) is recommended for detection of FAM3B of mouse, rat and human origin by Western Blotting (starting dilution 1:200, dilution range 1:100-1:1000), immunoprecipitation [1-2 μ g per 100-500 μ g of total protein (1 ml of cell lysate)], immunofluorescence (starting dilution 1:50, dilution range 1:50-1:500), immunohistochemistry (including paraffin-embedded sections) (starting dilution 1:50, dilution range 1:50-1:500) and solid phase ELISA (starting dilution 1:30, dilution range 1:30-1:3000); non cross-reactive with other FAM family members.

FAM3B (C-14) is also recommended for detection of FAM3B in additional species, including equine, canine, bovine, porcine and avian.

Suitable for use as control antibody for FAM3B siRNA (h): sc-91522, FAM3B siRNA (m): sc-145039, FAM3B shRNA Plasmid (h): sc-91522-SH, FAM3B shRNA Plasmid (m): sc-145039-SH, FAM3B shRNA (h) Lentiviral Particles: sc-91522-V and FAM3B shRNA (m) Lentiviral Particles: sc-145039-V.

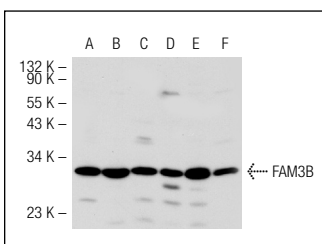
Molecular Weight of FAM3B: 26 kDa.

Positive Controls: HEK293 whole cell lysate: sc-45136, Daudi cell lysate: sc-2415 or K-562 whole cell lysate: sc-2203.

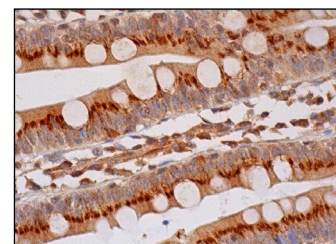
RECOMMENDED SECONDARY REAGENTS

To ensure optimal results, the following support (secondary) reagents are recommended: 1) Western Blotting: use goat anti-rabbit IgG-HRP: sc-2004 (dilution range: 1:2000-1:100,000) or Cruz Marker™ compatible goat anti-rabbit IgG-HRP: sc-2030 (dilution range: 1:2000-1:5000), Cruz Marker™ Molecular Weight Standards: sc-2035, TBS Blotto A Blocking Reagent: sc-2333 and Western Blotting Luminol Reagent: sc-2048. 2) Immunoprecipitation: use Protein A/G PLUS-Agarose: sc-2003 (0.5 ml agarose/2.0 ml). 3) Immunofluorescence: use goat anti-rabbit IgG-FITC: sc-2012 (dilution range: 1:100-1:400) or goat anti-rabbit IgG-TR: sc-2780 (dilution range: 1:100-1:400) with UltraCruz™ Mounting Medium: sc-24941. 4) Immunohistochemistry: use ImmunoCruz™: sc-2051 or ABC: sc-2018 rabbit IgG Staining Systems.

DATA



FAM3B (C-14): sc-83250. Western blot analysis of FAM3B expression in HEK 293 (A), Daudi (B), K-562 (C), SK-BR-3 (D), Ramos (E) and HeLa (F) whole cell lysates.



FAM3B (C-14): sc-83250. Immunoperoxidase staining of formalin fixed, paraffin-embedded human small intestine tissue showing cytoplasmic staining of glandular cells.

SELECT PRODUCT CITATIONS

- Xiang, J.N., et al. 2012. Effect of PANDER in β TC6-cell lipopoptosis and the protective role of exendin-4. *Biochem. Biophys. Res. Commun.* 421: 701-706.

STORAGE

Store at 4° C, **DO NOT FREEZE**. Stable for one year from the date of shipment. Non-hazardous. No MSDS required.

RESEARCH USE

For research use only, not for use in diagnostic procedures.

PROTOCOLS

See our web site at www.scbt.com or our catalog for detailed protocols and support products.



Try **FAM3B (1E7): sc-517177**, our highly recommended monoclonal alternative to FAM3B (C-14).