

# KRTAP24-1 (S-19): sc-83280

## BACKGROUND

Hair is a structure that is unique to mammals. It plays an important role in the retention of heat, as well as sexual dimorphism, attraction of mates and protection of skin. The major components of hair are  $\alpha$ -keratins and keratin-associated proteins (KRTAPs or KAPs), each of which are encoded by multi-gene families. Hair keratins form an intermediate filament (IF) network, which is embedded in an interfilamentous matrix consisting of KRTAPs. KRTAPs comprise three major groups, which are essential for the formation of rigid and resistant hair shafts through disulfide bond cross-linking or hydrophobic interactions with keratins. These groups are designated high Cysteine (HS), which includes subfamilies 1, 2, 3, 10, 12, 16, 29 and 31, ultrahigh Cysteine, including subfamilies 4, 5, 9, 17, 28, 30, 32 and 33, and high glycine-tyrosine (HGT), which includes subfamilies 6, 7, 8, 19, 20 and 21. In addition, subfamilies 11, 13, 24-27, 29, 34 and 35 have high serine content but relative low Cysteine content. After further phylogenetic studies, subfamilies 14 and 15 have been grouped with subfamily 13 and subfamily 22 was combined with subfamily 19.

## REFERENCES

- Powell, B.C., Nesci, A. and Rogers, G.E. 1991. Regulation of keratin gene expression in hair follicle differentiation. *Annu. N.Y. Acad. Sci.* 642: 1-20.
- Emonet, N., Michaille, J.J. and Dhouailly, D. 1997. Isolation and characterization of genomic clones of human sequences presumably coding for hair Cysteine-rich proteins. *J. Dermatol. Sci.* 14: 1-11.
- Langbein, L., Rogers, M.A., Winter, H., Praetzel, S., Beckhaus, U., Rackwitz, H.R. and Schweizer, J. 1999. The catalog of human hair keratins. I. Expression of the nine type I members in the hair follicle. *J. Biol. Chem.* 274: 19874-19884.
- Langbein, L., Rogers, M.A., Winter, H., Praetzel, S. and Schweizer, J. 2001. The catalog of human hair keratins. II. Expression of the six type II members in the hair follicle and the combined catalog of human type I and II keratins. *J. Biol. Chem.* 276: 35123-35132.

## CHROMOSOMAL LOCATION

Genetic locus: KRTAP24-1 (human) mapping to 21q22.11.

## SOURCE

KRTAP24-1 (S-19) is an affinity purified rabbit polyclonal antibody raised against a peptide mapping within an internal region of KRTAP24-1 of human origin.

## PRODUCT

Each vial contains 100  $\mu$ g IgG in 1.0 ml of PBS with < 0.1% sodium azide and 0.1% gelatin.

Blocking peptide available for competition studies, sc-83280 P, (100  $\mu$ g peptide in 0.5 ml PBS containing < 0.1% sodium azide and 0.2% BSA).

## RESEARCH USE

For research use only, not for use in diagnostic procedures.

## APPLICATIONS

KRTAP24-1 (S-19) is recommended for detection of KRTAP24-1 of human origin by Western Blotting (starting dilution 1:200, dilution range 1:100-1:1000), immunoprecipitation [1-2  $\mu$ g per 100-500  $\mu$ g of total protein (1 ml of cell lysate)], immunofluorescence (starting dilution 1:50, dilution range 1:50-1:500), immunohistochemistry (including paraffin-embedded sections) (starting dilution 1:50, dilution range 1:50-1:500) and solid phase ELISA (starting dilution 1:30, dilution range 1:30-1:3000); non cross-reactive with other KRTAP family members.

KRTAP24-1 (S-19) is also recommended for detection of KRTAP24-1 in additional species, including equine.

Suitable for use as control antibody for KRTAP24-1 siRNA (h): sc-91378, KRTAP24-1 shRNA Plasmid (h): sc-91378-SH and KRTAP24-1 shRNA (h) Lentiviral Particles: sc-91378-V.

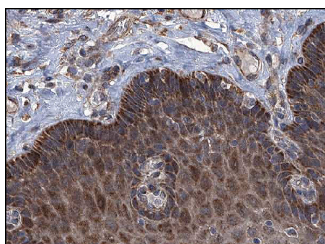
Molecular Weight of KRTAP24-1: 28 kDa.

Positive Controls: Jurkat whole cell lysate: sc-2204.

## RECOMMENDED SECONDARY REAGENTS

To ensure optimal results, the following support (secondary) reagents are recommended: 1) Western Blotting: use goat anti-rabbit IgG-HRP: sc-2004 (dilution range: 1:2000-1:100,000) or Cruz Marker<sup>™</sup> compatible goat anti-rabbit IgG-HRP: sc-2030 (dilution range: 1:2000-1:5000), Cruz Marker<sup>™</sup> Molecular Weight Standards: sc-2035, TBS Blotto A Blocking Reagent: sc-2333 and Western Blotting Luminol Reagent: sc-2048. 2) Immunoprecipitation: use Protein A/G PLUS-Agarose: sc-2003 (0.5 ml agarose/2.0 ml). 3) Immunofluorescence: use goat anti-rabbit IgG-FITC: sc-2012 (dilution range: 1:100-1:400) or goat anti-rabbit IgG-TR: sc-2780 (dilution range: 1:100-1:400) with UltraCruz<sup>™</sup> Mounting Medium: sc-24941. 4) Immunohistochemistry: use ImmunoCruz<sup>™</sup>: sc-2051 or ABC: sc-2018 rabbit IgG Staining Systems.

## DATA



KRTAP24-1 (S-19): sc-83280. Immunoperoxidase staining of formalin fixed, paraffin-embedded human esophagus tissue showing cytoplasmic staining of squamous epithelial cells at high magnification. Kindly provided by The Swedish Human Protein Atlas (HPA) program.

## STORAGE

Store at 4° C, **\*\*DO NOT FREEZE\*\***. Stable for one year from the date of shipment. Non-hazardous. No MSDS required.