

PRDM15 (S-18): sc-83314

BACKGROUND

The PR-domain containing proteins (PRDMs) have a common involvement in the modulation of gene activities. A PR-domain family member usually produces two products, called PR-plus and PR-minus, which differ by the presence or absence of the PR domain, respectively. The PR-plus product is underexpressed or disrupted in cancer cells, whereas the PR-minus product is present or overexpressed in cancer cells. This imbalance in the amount of the two products, which is a result of either genetic or epigenetic events, appears to be a determining factor of malignancy. PRDM15 (PR domain-containing protein 15), also known as PFM15 or ZNF298, is a 1507 amino acid protein belonging to the PRDM family. Localizing to the nucleus, PRDM15 contains 16 C₂H₂-type zinc fingers and one SET domain. It is believed to participate in transcriptional regulation and may be involved in cell differentiation and tumorigenesis.

REFERENCES

1. Liu, L., et al. 1997. The retinoblastoma interacting zinc finger gene RIZ produces a PR domain-lacking product through an internal promoter. *J. Biol. Chem.* 272: 2984-2991.
2. Huang, S. 1999. The retinoblastoma protein-interacting zinc finger gene RIZ in 1p36-linked cancers. *Front. Biosci.* 4: D528-532.
3. Jiang, G.L. and Huang, S. 2000. The yin-yang of PR-domain family genes in tumorigenesis. *Histol. Histopathol.* 15: 109-117.
4. Strausberg, R.L., et al. 2002. Generation and initial analysis of more than 15,000 full-length human and mouse cDNA sequences. *Proc. Natl. Acad. Sci. USA* 99: 16899-16903.
5. Wilm, T.P. and Solnica-Krezel, L. 2004. Essential roles of a zebrafish PRDM1/Blimp1 organogenesis. *Development* 132: 393-404.
6. Fitzgerald, J. and Bateman, J.F. 2004. Why mice have lost genes for COL21A1, STK17A, GPR145 and AHRI: evidence for gene deletion at evolutionary breakpoints in the rodent lineage. *Trends Genet.* 20: 408-412.
7. Shibuya, K., et al. 2005. Identification of a novel zinc finger protein gene (ZNF298) in the GAP2 of human chromosome 21q. *Biochem. Biophys. Res. Commun.* 332: 557-568.

CHROMOSOMAL LOCATION

Genetic locus: PRDM15 (human) mapping to 21q22.3; Prdm15 (mouse) mapping to 16 C4.

SOURCE

PRDM15 (S-18) is an affinity purified rabbit polyclonal antibody raised against a peptide mapping within an internal region of PRDM15 of human origin.

PRODUCT

Each vial contains 100 µg IgG in 1.0 ml of PBS with < 0.1% sodium azide and 0.1% gelatin.

Blocking peptide available for competition studies, sc-83314 P, (100 µg peptide in 0.5 ml PBS containing < 0.1% sodium azide and 0.2% BSA).

APPLICATIONS

PRDM15 (S-18) is recommended for detection of PRDM15 of mouse, rat and human origin by Western Blotting (starting dilution 1:200, dilution range 1:100-1:1000), immunoprecipitation [1-2 µg per 100-500 µg of total protein (1 ml of cell lysate)], immunofluorescence (starting dilution 1:50, dilution range 1:50-1:500) and solid phase ELISA (starting dilution 1:30, dilution range 1:30-1:3000); non cross-reactive with other PRDM family members.

PRDM15 (S-18) is also recommended for detection of PRDM15 in additional species, including canine, bovine, porcine and avian.

Suitable for use as control antibody for PRDM15 siRNA (h): sc-91394, PRDM15 siRNA (m): sc-152449, PRDM15 shRNA Plasmid (h): sc-91394-SH, PRDM15 shRNA Plasmid (m): sc-152449-SH, PRDM15 shRNA (h) Lentiviral Particles: sc-91394-V and PRDM15 shRNA (m) Lentiviral Particles: sc-152449-V.

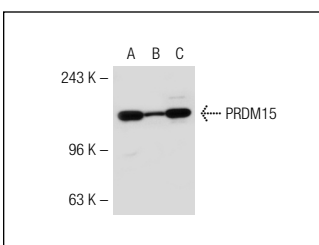
Molecular Weight of PRDM15: 169 kDa.

Positive Controls: SK-N-MC nuclear extract: sc-2154, MCF7 nuclear extract: sc-2149 or Jurkat nuclear extract: sc-2132.

RECOMMENDED SECONDARY REAGENTS

To ensure optimal results, the following support (secondary) reagents are recommended: 1) Western Blotting: use goat anti-rabbit IgG-HRP: sc-2004 (dilution range: 1:2000-1:100,000) or Cruz Marker™ compatible goat anti-rabbit IgG-HRP: sc-2030 (dilution range: 1:2000-1:5000), Cruz Marker™ Molecular Weight Standards: sc-2035, TBS Blotto A Blocking Reagent: sc-2333 and Western Blotting Luminol Reagent: sc-2048. 2) Immunoprecipitation: use Protein A/G PLUS-Agarose: sc-2003 (0.5 ml agarose/2.0 ml). 3) Immunofluorescence: use goat anti-rabbit IgG-FITC: sc-2012 (dilution range: 1:100-1:400) or goat anti-rabbit IgG-TR: sc-2780 (dilution range: 1:100-1:400) with UltraCruz™ Mounting Medium: sc-24941.

DATA



PRDM15 (S-18): sc-83314. Western blot analysis of PRDM15 expression in SK-N-MC (A), MCF7 (B) and Jurkat (C) nuclear extracts.

STORAGE

Store at 4° C, **DO NOT FREEZE**. Stable for one year from the date of shipment. Non-hazardous. No MSDS required.

RESEARCH USE

For research use only, not for use in diagnostic procedures.