

# Bcl-G (N-14): sc-83376

## BACKGROUND

Apoptosis is defined as a set of cascades which, when initiated, program the cell to undergo lethal changes, such as membrane blebbing, mitochondrial breakdown and DNA fragmentation. Bcl-2 is one of many key regulators of apoptosis that are essential for proper development, tissue homeostasis and protection against foreign pathogens. Bcl-G, also known as BCL2L14 (BCL2-like 14) or BCLG, is a 327 amino acid cytoplasmic protein that belongs to the Bcl-2 family of apoptosis-regulating proteins. Bcl-G is expressed as three alternatively spliced transcripts, designated short, medium and long. The short isoform is testis-specific and localizes to cytosolic organelles, while the long isoform is widely expressed and is distributed throughout the cytosol. Overexpression of Bcl-G induces apoptosis in cells, suggesting a possible role for Bcl-G in tumor suppression.

## REFERENCES

- Guo, B., Godzik, A. and Reed, J.C. 2001. Bcl-G, a novel pro-apoptotic member of the Bcl-2 family. *J. Biol. Chem.* 276: 2780-2785.
- Ozalp, S.S., Yalcin, O.T., Tanir, H.M., Dundar, E. and Yildirim, S. 2002. Bcl-2 expression in preinvasive and invasive cervical lesions. *Eur. J. Gynaecol. Oncol.* 23: 419-422.
- Abdelhaleem, M., Yi, Q., Beimnet, K. and Hitzler, J. 2006. A novel TEL-AML1 fusion transcript involving the pro-apoptotic gene BCLG in pediatric precursor B acute lymphoblastic leukemia. *Leukemia* 20: 1294-1294.
- Nakamura, M. and Yamaguchi, S. 2006. The ubiquitin-like protein MNSF- $\beta$  regulates ERK-MAPK cascade. *J. Biol. Chem.* 281: 16861-16869.
- Soung, Y.H., Lee, J.W., Park, W.S., Nam, S.W., Lee, J.Y., Yoo, N.J. and Lee, S.H. 2006. BH3 domain mutation of proapoptotic genes Bad, Bmf and Bcl-G is rare in transitional cell carcinomas of the urinary bladder. *Pathology* 38: 33-34.
- Yoo, N.J., Soung, Y.H., Lee, S.H., Jeong, E.G. and Lee, S.H. 2007. Mutational analysis of the BH3 domains of proapoptotic Bcl-2 family genes Bad, Bmf and Bcl-G in laryngeal squamous cell carcinomas. *Tumori* 93: 195-197.

## CHROMOSOMAL LOCATION

Genetic locus: BCL2L14 (human) mapping to 12p13.2; Bcl2l14 (mouse) mapping to 6 G1.

## SOURCE

Bcl-G (N-14) is an affinity purified goat polyclonal antibody raised against a peptide mapping near the N-terminus of Bcl-G of human origin.

## PRODUCT

Each vial contains 200  $\mu$ g IgG in 1.0 ml of PBS with < 0.1% sodium azide and 0.1% gelatin.

Blocking peptide available for competition studies, sc-83376 P, (100  $\mu$ g peptide in 0.5 ml PBS containing < 0.1% sodium azide and 0.2% BSA).

## APPLICATIONS

Bcl-G (N-14) is recommended for detection of Bcl-G of mouse, rat and human origin by Western Blotting (starting dilution 1:200, dilution range 1:100-1:1000), immunoprecipitation [1-2  $\mu$ g per 100-500  $\mu$ g of total protein (1 ml of cell lysate)], immunofluorescence (starting dilution 1:50, dilution range 1:50-1:500) and solid phase ELISA (starting dilution 1:30, dilution range 1:30-1:3000); non cross-reactive with other Bcl family members.

Suitable for use as control antibody for Bcl-G siRNA (h): sc-72631, Bcl-G siRNA (m): sc-72632, Bcl-G shRNA Plasmid (h): sc-72631-SH, Bcl-G shRNA Plasmid (m): sc-72632-SH, Bcl-G shRNA (h) Lentiviral Particles: sc-72631-V and Bcl-G shRNA (m) Lentiviral Particles: sc-72632-V.

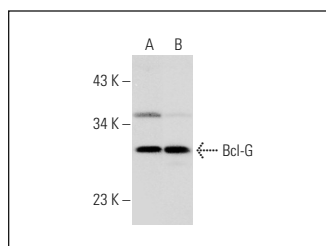
Molecular Weight of Bcl-G: 30 kDa.

Positive Controls: A549 cell lysate: sc-2413, PANC-1 whole cell lysate: sc-364380 or HeLa whole cell lysate: sc-2200.

## RECOMMENDED SECONDARY REAGENTS

To ensure optimal results, the following support (secondary) reagents are recommended: 1) Western Blotting: use donkey anti-goat IgG-HRP: sc-2020 (dilution range: 1:2000-1:100,000) or Cruz Marker™ compatible donkey anti-goat IgG-HRP: sc-2033 (dilution range: 1:2000-1:5000), Cruz Marker™ Molecular Weight Standards: sc-2035, TBS Blotto A Blocking Reagent: sc-2333 and Western Blotting Luminol Reagent: sc-2048. 2) Immunoprecipitation: use Protein A/G PLUS-Agarose: sc-2003 (0.5 ml agarose/2.0 ml). 3) Immunofluorescence: use donkey anti-goat IgG-FITC: sc-2024 (dilution range: 1:100-1:400) or donkey anti-goat IgG-TR: sc-2783 (dilution range: 1:100-1:400) with UltraCruz™ Mounting Medium: sc-24941.

## DATA



Bcl-G (N-14): sc-83376. Western blot analysis of Bcl-G expression in PANC-1 (A) and HeLa (B) whole cell lysates.

## STORAGE

Store at 4° C, \*\*DO NOT FREEZE\*\*. Stable for one year from the date of shipment. Non-hazardous. No MSDS required.

## RESEARCH USE

For research use only, not for use in diagnostic procedures.

## PROTOCOLS

See our web site at [www.scbt.com](http://www.scbt.com) or our catalog for detailed protocols and support products.